



---

Florida Seaport Transportation and  
Economic Development Council

**Wednesday, September 2,  
2020**

**1:30 p.m.- 4:30 p.m.**

**Teleconference**

**Phone Number:**

**(646) 558-8656**

**Meeting ID: 654 023-9803**

**TAB 1**  
**Call to Order**

# FSTED

---

## Florida Seaport Transportation and Economic Development Council

### **AGENDA**

Wednesday, September 2, 2020  
1:30 PM – 4:30 PM

1. Call to Order, Chairwoman's Welcome and Opening Comments
2. Roll Call
3. Administrative Issues
  - a. Approval of the February 6, 2020 Meeting Minutes
  - b. Approval of the February 28, 2020 Meeting Minutes
  - c. Report on Seaport Environmental Management Committee
  - d. Report on FSTED Security Committee
4. Reports and Studies
  - a. Seaport Mission Plan
  - b. Economic Impact Study
5. Legislative Report
6. Agency Reports
  - a. Department of Economic Opportunity
  - b. Department of Transportation
7. Program Funding
  - a. Discussion and Review of Seaport Funding Spend Downs
  - b. Approval of Reallocation of FY 20/21 FSTED Program Funds
  - c. Agency Reports on Consistency Review of FY 21/22 FSTED Program Project Applications
  - d. Recommendation and Approval of FY 21/22 FSTED Program Allocations
8. Other Issues
  - a. FSTED Bylaws
  - b. FSTED New Officer Elections
  - c. New Business
9. Adjournment

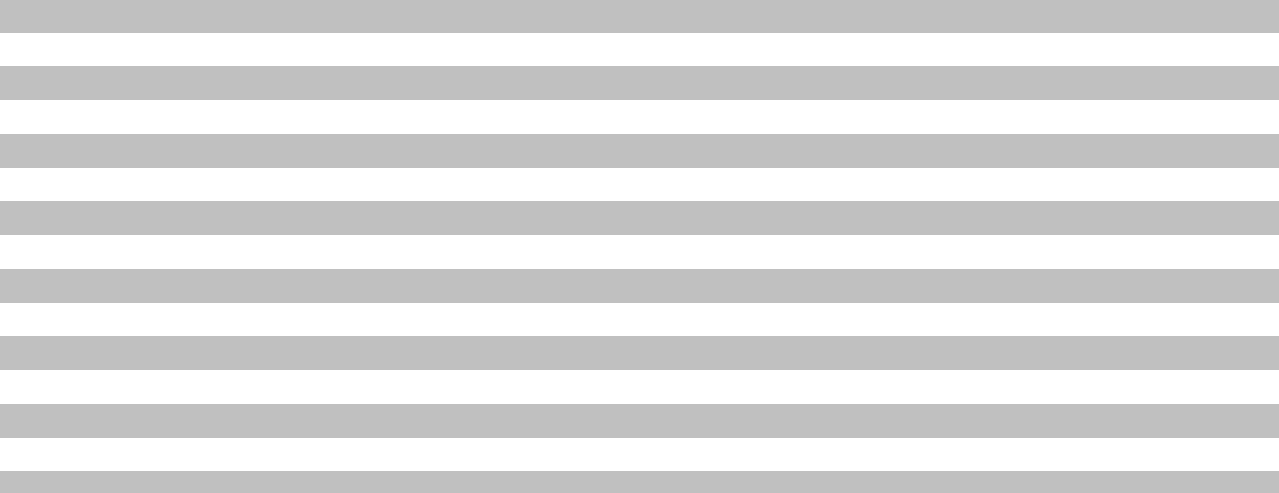
## **TAB 2**

### **Roll Call**



# Florida Seaport Transportation and Economic Development Council

Wednesday, September 2, 2020



**TAB 3**  
**Administrative Issues**

**TAB 3a**  
**Approval of February 2, 2020 Meeting**  
**Minutes**



Florida Seaport Transportation and  
Economic Development Council

**MEETING SUMMARY**

FLORIDA SEAPORT TRANSPORTATION AND  
ECONOMIC DEVELOPMENT COUNCIL

February 6, 2020  
Hotel Duval  
Tallahassee, Florida

A meeting of the Florida Seaport Transportation and Economic Development (FSTED) Council was held on February 6, 2020 via teleconference. Chairwoman Amy Miller called the meeting to order. The Assistant Secretary called the roll. Members present were:

John Murray, Port Canaveral  
Glenn Wiltshire, Port Everglades  
Chris Ragucci, Port of Fernandina  
Nicole Fogarty for Stan Payne, Port of Ft. Pierce  
Eric Green, JAXPORT  
Dave Sanford for Carlos Buqueras, Port Manatee  
Becky Hope for Juan Kuryla, PortMiami  
Manuel Almira, Port of Palm Beach  
Wayne Stubbs, Port Panama City  
Amy Miller, Port of Pensacola  
David Wirth, Port St. Pete  
Clay Hollis for Paul Anderson, Port Tampa Bay  
Tom Byron for Secretary Kevin Thibault, Florida Department of Transportation (FDOT)  
Ryan Fierst for Director Kenneth Lawson, Department of Economic Opportunity (DEO)

A quorum was present. Also, in attendance were

Gerard O'Rourke, FDOT  
Fred Wong, JAXPORT  
Chris Cooley, Port Tampa Bay  
Daniel Hubbard, FDOT  
Basil Binns, PortMiami  
Doug Wheeler, FPC  
Casey Grigsby, FPC  
Jessie Werner, FPC  
Michael Rubin, FPC

Agenda Item 3a, Approval of the August 28, 2019 Meeting Minutes, was taken up. A motion was made by Mr. Wiltshire, seconded by Mr. Green, and passed approving the minutes.

Agenda Item 3b, Report on Seaport Environmental Management Committee (SEMC) Meeting, was taken

# FSTED

---

## Florida Seaport Transportation and Economic Development Council

up. Mr. Cooley provided the members with a report on SEMC. The Committee discussed the IMO 2020 and vessels looking at ways to reducing diesel emissions utilizing low sulfur fuels and scrubber systems. Ballast water continues to be a topic of concern and having a standard message across all ports. The 404 assumption by the USACE permitting is not anticipated to affect ports as it does not include navigable water, rivers, or harbors, and mainly will focus on isolated wetlands.

Agenda Item 3c, Report on FSTED Security Committee, was taken up. Mr. Rubin provided the members with a report on the recent activity of the Committee. Held meeting at Port Canaveral and now in Tallahassee the Committee has engaged with the Department of Emergency Management regarding fuel terminals funding in the upcoming budgets. This will be an ongoing partnership and discussion. The PTGA's for the security projects that were approved by FSTED are in the process, and the Committee is still awaiting modifications and feedback from FDOT. Mr. Byron indicated that FDOT would need some help understanding the FSTED bylaws prior to proceeding with processing the FSTED Security Grants and the data planning funding.

Mr. Wheeler explained that the data, research, and planning statute language has been in Florida Statute in section 311.07, 311.09, and 311.14 since 2012 when it was added by the Florida Ports Council in coordination with FDOT. After open discussion Chair Miller clarified that FDOT would prefer if the sitting chair of the FSTED Council sign future contracts on behalf of the FSTED Council, and that this would need to be updated in the FSTED bylaws. A motion was made by Mr. Stubbs, seconded by Captain Murray, for the for the FSTED Council to request that Florida Ports Council staff as administrators of the FSTED Program to retain an attorney with expertise in state law to confer with FDOT's General Counsel to discuss and develop remedies for the contracting issues.

Agenda Item 4, Reports, was taken up. Ms. Grigsby presented on the reports. The Alternative Fuel Report was published two weeks ago and was well received, the report stemmed from the growth of natural gas within the state, notably at JAXPORT and Port Canaveral. There are 26 LNG ships on the cruise work order by 2026; three from Disney that are usually based in Canaveral. In October 2020 Port Canaveral will have the first North American LNG powered cruise ship. The Seaport Resiliency Study was released mid-summer early fall 2019. This study highlighted the proactive work Florida seaports are conducting in terms of natural disasters, sea level rise, and best practices for resiliency preparation and recovery. The Seaport Mission Plan has been delayed due to the previously mentioned funding issues; however, the data has been collected by FSTED staff.

Agenda Item 5, Legislative Report, was taken up. Mr. Rubin reported that there are some transportation bills this year, including the Departments' which will remove the expiration date from the Intermodal Logistics Center program that is set to sunset this year if it passes.

Agenda Item 6, Agency Reports, was taken up. Ms. Fierst presented the report on behalf of DEO. Florida's monthly economic report presented the lowest unemployment rate on state record at 3 percent. DEO has received a grant from the U.S. Department of Defense to create an economic development tool to assist small and middle-sized aerospace and defense contractors who are looking to grow and expand their businesses. The tool will be able to pushdown information from current defense contracting portals so that people can see regional opportunities for subcontractor business growth.

Mr. Byron requested a copy of the FSTED bylaws for FDOT.

# F S T E D

---

## Florida Seaport Transportation and Economic Development Council

Agenda Item 7, Program Funding, was taken up. Chair Miller asked for several seaport reports on seaport funding spend downs. The berth rehabilitation at Port Manatee with about \$724,000 remaining is in the process of acquiring a time extension according to Mr. Sanford. The berth has had some additional damage and the port will need to do an emergency procurement, then the spend down should happen quickly. Port of Fernandina has two grants for cargo improvements, wharf maintenance, and dredging totaling \$187, 500 and \$7,902 that will both request an extension according to Mr. Ragucci. The Talleyrand Marine Terminal improvements, Berth 7 and 8, and Blount Island Talleyrand Marine Terminal improvements at JAXPORT with \$5.49 million and \$787,000 remaining are in the process of completion with the buildout of the underdecking according to Mr. Green. Chair Miller explained that the Port of Pensacola's Berth 6 Rehabilitation has a remaining balance of \$1.6 million, and that the port was working with the FDOT District Office for a September 30<sup>th</sup> extension, or to roll the funds to a different project. Mr. Wiltshire discussed the new bulkhead at Berth 9 and 10 with a remaining balance of \$200,000; the project is in the design phase and will request an extension and should complete the spenddown phase soon after. Ms. Grigsby and Ms. Fogarty reported on the Port of Ft. Pierce spend downs of three projects. Fisherman's Wharf bulkhead has a balance of \$203,000, the invoice has already been sent to FDOT. Fisherman's Wharf Road development \$29,000 has already received an extension. The Sea Grass study with a balance of \$83,000 has an extension until December 2021. The port is relooking at the conceptual design related to the study. The Port of Palm has four projects that Mr. Almira reported on. The port rail expansion with a balance of \$1 million was granted an extension and is in the process of trying to obtain some federal funding; the upland cargo improvements with a \$265,000 balance ran into a project delay due to Hurricane Dorian; however, FP&L completed the work in January and the rest of the project is expected to be done by September. Berth 1 with a remaining balance of \$750,000 is complete and the port will need additional funding for the shore power next. Ms. Hope reported that PortMiami will ask for an extension for the remaining \$1 million gantry crane funds as they are still in the procurement process.

Agenda Item 7b, Federal Funding Opportunities, was taken up. Ms. Grigsby provided an overview of the upcoming federal grant opportunities that included: INFRA, BUILD, and DERA. Supplemental materials and Notice of Funding Opportunities were included within the Board Materials. All members were offered Letters of Support or points of contact for preparing federal grants. The INFRA and DERA Grants close on February 21<sup>st</sup>.

Agenda Item 7c, State Funding Opportunities, was taken up. Mr. Grigsby provided an update on State Grant Opportunities. The Intermodal Logistics Center Grant at FDOT is currently accepting applications until February 21<sup>st</sup>. \$5 million is currently available under this program, and only one applicant applied last year receiving \$2.5 million.

The meeting was adjourned at 2:06 p.m.

**TAB 3b**  
**Approval of February 28, 2020 Meeting**  
**Minutes**



---

Florida Seaport Transportation and  
Economic Development Council

**MEETING SUMMARY**

**FLORIDA SEAPORT TRANSPORTATION AND  
ECONOMIC DEVELOPMENT COUNCIL**

February 28, 2020  
Teleconference

A meeting of the Florida Seaport Transportation and Economic Development (FSTED) Council was held on February 28, 2020 via teleconference. Chairwoman Amy Miller called the meeting to order. The Assistant Secretary called the roll. Members present were:

John Murray, Port Canaveral  
Glenn Wiltshire, Port Everglades  
Chris Ragucci, Port of Fernandina  
Stan Payne, Port of Ft. Pierce  
Fred Wong for Eric Green, JAXPORT  
Carlos Buqueras, Port Manatee  
Becky Hope for Juan Kuryla, Port Miami  
Manuel Almira, Port of Palm Beach  
Wayne Stubbs, Port Panama City  
Amy Miller, Port of Pensacola  
Guerry Magidson, Port of Port St. Joe  
Paul Anderson, Port Tampa Bay  
Secretary Kevin Thibault, Florida Department of Transportation  
Jason Rojas for Director Kenneth Lawson, Department of Economic Opportunity

A quorum was present. Also, in attendance were:

Basil Binns, PortMiami  
Doug Wheeler, FPC  
Casey Grigsby, FPC  
Jessie Werner, FPC  
Michael Rubin, FPC





Florida Seaport Transportation and  
Economic Development Council

Agenda Item 3a, Discussion of the Release of FSTED Funds, was taken up. The Council agreed that FSTED staff should proceed with structuring contracts collaboratively, and if need be seeking clarifying legislation. Processes for the FSTED Council will be adjusted with coordination of staff, the Chair, and FDOT as needed.

The meeting was adjourned at 2:11 p.m.

**TAB 3c**  
**Report on Seaport Environmental  
Management Committee Meeting**



Florida Seaport Transportation and  
Economic Development Council

**Seaport Environmental Management Committee  
AGENDA**

**Tuesday, September 2, 2020  
1:30-4:30 p.m.**

1. Call to Order, Welcome
2. Roll Call
3. Approval of February 5, 2020 SEMC Meeting Minutes
4. Guest presentation by U.S. Army Corps of Engineers, Engineering Research and Development Center (ERDC): Institutionalizing Resilience at U.S. Seaports
5. Agency Updates
  - a. Florida Department of Environmental Protection (FDEP)
  - b. Florida Department of Economic Opportunity (DEO)
  - c. U.S. Army Corps of Engineers-Civil Works and Regulatory Division
  - d. Florida Inland Navigation District (FIND)
  - e. Florida Fish & Wildlife Conservation Commission
  - f. Environmental Protection Agency Region 4
6. Open Discussion
  - a. FDEP- Turbidity Rule
  - b. Florida Ocean Alliance Strategic Plan
  - c. Diesel Emission Reduction Program (DERA) Grants
  - d. National Environmental Policy Act (NEPA)
  - e. Seaport Resiliency
  - f. Other Issues
7. Adjourn

**TAB 3d**  
**Report on FSTED Security Committee**

# Florida Seaport Transportation and Economic Development Council

Canaveral Port Authority · Port Citrus · Port Everglades · Port of Fernandina · Port of Fort Pierce  
Jacksonville Port Authority · Port of Key West · Manatee County Port Authority · PortMiami · Port of Palm Beach  
Panama City Port Authority · Port of Pensacola · Port St. Joe Port Authority · Port St. Pete · Tampa Port Authority ·  
Florida Department of Transportation · Florida Department of Economic Opportunity

## Seaport Security Advisory Committee Meeting Tuesday, September 2, 2020 Video Teleconference

### **AGENDA**

10:00 am -- 12:00 pm

1. Call to Order
2. Member Introductions/ Comments
3. Discussion of Seaport Security Grant Program
4. Discussion of CDC Request for Information
5. Discussion of Current COVID-19 Response Issues
6. Discussion of Cybersecurity Issues
7. Other Issues
8. Adjournment

**TAB 4a**  
**Seaport Mission Plan**

# FOCUSED ON THE FUTURE



## CELEBRATING 30 YEARS

2020 | 2024 FIVE-YEAR FLORIDA  
SEAPORT MISSION PLAN

Florida Seaport Transportation and  
Economic Development Council

[flaports.org](http://flaports.org)

FLORIDA  
**PORTS**  
COUNCIL

**TAB 4b**  
**Economic Impact Study**





---

**PREPARED FOR :** Florida Ports Council  
by Martin Associates, August 2020

---

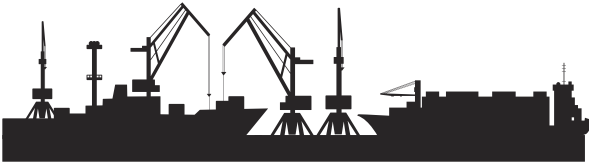
# ECONOMIC IMPACTS OF COVID-19 ON FLORIDA PORTS AND THE STATE'S ECONOMY

---

502 East Jefferson Street, Tallahassee, FL 32301  
[www.flaports.org](http://www.flaports.org) | [info@flaports.org](mailto:info@flaports.org)



THE PANDEMIC IS ESTIMATED TO HAVE AN ECONOMIC IMPACT OF MORE THAN \$22 BILLION ON THE STATE OF FLORIDA & RESULT IN THE LOSS OF 169,000 JOBS THROUGH 2020.



METHODOLOGY

A survey of the estimated impact of COVID-19 on Florida seaport cruise and cargo activity through 2020 allowed Martin Associates to develop economic impact models, used to estimate the broader impact of the pandemic on the maritime industry in the state of Florida.

CARGO/ PASSENGERS	LOSSES
Liquid bulk cargo (tons)	↓ 5.6 M
Dry bulk cargo (tons)	↓ 1.6 M
TEUs (containerized cargo)	↓ 522,592
Cruise Passengers	↓ 4.9 M

CARGO & PASSENGERS

The survey of the ports indicated that COVID-19 will likely result in the loss of 5.6 million tons of liquid bulk cargo, 1.6 million tons of dry bulk cargo and 522,592 TEUs of containerized cargo. With respect to cruise activity at Florida seaports, a loss of 4.9 million passengers is anticipated.



JOBS

A 2016 study by Martin Associates stated that nearly 900,000 jobs were directly and indirectly supported by Florida seaports, up from 680,000 in 2012.

Nearly 169,000 Florida jobs supported by port activity are estimated to be lost due to the pandemic. Of these jobs, 15,563 directly support cruise and cargo activity within the state. As a result of local and regional purchases by individuals holding direct jobs, 10,116 induced jobs with restaurants, grocery stores, retail outlets, and housing and health care providers could also be lost. Furthermore, as a result of lost or reduced local purchases by the companies providing services to cruise and cargo operations, an additional 8,981 indirect jobs within the state could be impacted by the loss of \$652.4 million of local purchases made by companies directly dependent on Florida ports.

A reduction in cargo moving through Florida is expected to impact 134,261 state-wide jobs related to imports and exports. These jobs are classified as related, and are created because of the demand for products, not the use of the ports. However, with the projected loss of cargo at Florida ports due to COVID-19, these jobs are also likely to suffer dislocation.

ECONOMIC ACTIVITY

Prior to this pandemic, Florida seaports had a \$117.6 billion economic impact on the state and generated local and state tax revenues in excess of \$4.3 billion. The impact of COVID-19 on cargo and cruise at our ports is expected to result in a loss of \$22.2 billion in total economic activity to the state. This consists of direct business revenue loss of \$5.1 billion, the responding and local consumption impact of \$1.2 billion, and the related user output of nearly \$16 billion. The majority of these user impact losses are associated with containerized cargo. This dollar value represents the sphere of influence on Florida ports that could be lost due to the COVID-19 pandemic.

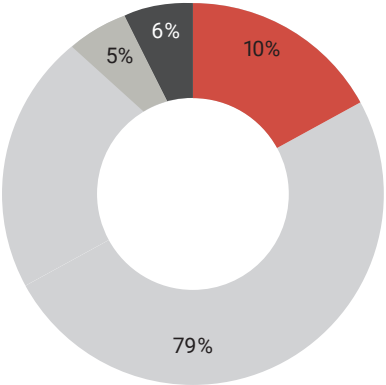
Finally, a total of \$776.8 million in state and local tax revenue is at risk.

ESTIMATED JOB LOSSES

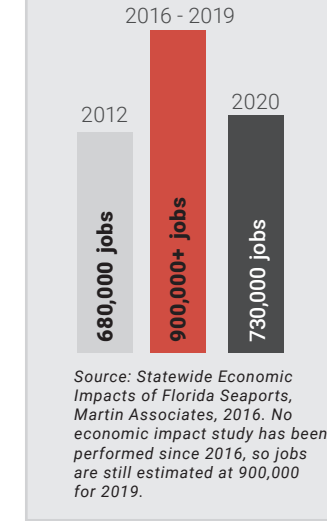
169,000

jobs in the state that port activity supports could be lost from the state's economy.

TYPES OF JOBS AT RISK



PORT SUPPORTED JOBS



IN AN AVERAGE YEAR, FLORIDA PORTS GENERATE 13% OF THE STATE GDP AND SUPPORT OVER 900,000 JOBS.

ESTIMATED ECONOMIC IMPACT

\$22.2 B

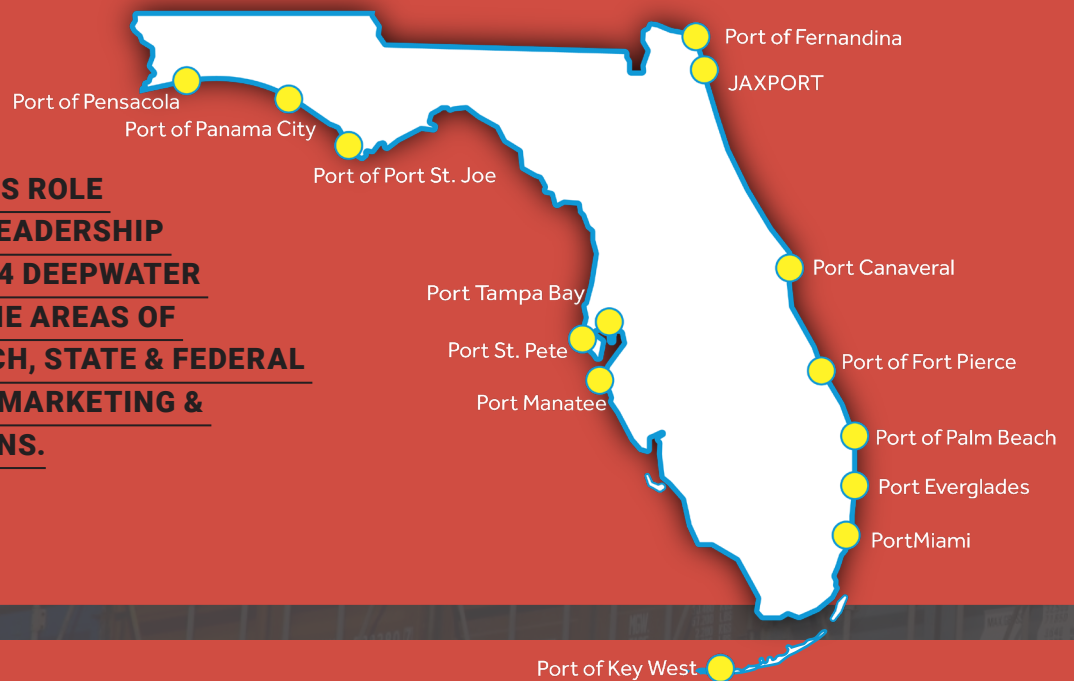
economic activity losses for the state of Florida through 2020 are expected.

ECONOMIC ACTIVITY	LOSSES
Direct business revenue loss	\$5.1 B
Responding and local consumption impact	\$1.2 B
Related user output	\$16 B



# FLORIDA SEAPORTS

**THE FLORIDA  
PORTS COUNCIL'S ROLE  
IS TO PROVIDE LEADERSHIP  
FOR FLORIDA'S 14 DEEPWATER  
SEAPORTS IN THE AREAS OF  
DATA & RESEARCH, STATE & FEDERAL  
ADVOCACY AND MARKETING &  
COMMUNICATIONS.**



FLORIDA  
**PORTS**  
COUNCIL



**MARTIN**  
ASSOCIATES

**TAB 5**  
**Legislative Report**

**TAB 6**  
**Agency Reports**



**TAB 6a**  
**Department of Economic Opportunity**

# Cybersecurity Forum 2020

The Threats to You, Your Company and the Economy  
& Complying with the CybersecurityMaturity  
Model Certification (CMMC) Standards

Presented in  
Partnership  
Between



## Keynote Speaker – U.S. Senator Marco Rubio

Senator Rubio will present a compelling overview of the national risks associated with cyber breaches from other nation states. As Chair of the U.S. Senate Committee on Small Business and Entrepreneurship and Committee member of the Foreign Relations Committee and the Committee on Commerce Science and Transportation, he is in a unique position to understand and explain security risks that need to be closely overseen.



## Featuring – Katherine “Katie” Arrington

As the Chief Information Security Officer (CISO) to the Assistant Secretary of Defense for Acquisition, Ms. Arrington is leading efforts that will help to ensure a robust Supply Chain Risk Management (SCRM), establish defense industrial base security and resilience, and create a common basis in cybersecurity standards. The Department of Defense is in the process of implementing the new Cybersecurity Maturity Model Certification (CMMC) standards, and Ms. Arrington will give attendees an update on the timelines, the certification process, and the impact to industry.

## Topics • Discussions • Panels

- The Long View on Cybersecurity
- The Legal and Personal Financial Risks of Cyber Breaches
- Cyber Breach – The Real Thing and its Expected Impact
- Are We Prepared for a National Crippling Cyberattack?
- Cybersecurity Maturity Model Certification (CMMC) Perspectives from the CMMC Accreditation Body
- CMMC Challenges and Opportunities
- Mapping the CMMC Journey



SEP  
16-17

A 2-Day  
VIRTUAL  
Event

Register at [FAIF.org/Cybersecurity](https://FAIF.org/Cybersecurity)

Use discount code  
CYBER20 to save on  
general registration!

~~\$99.00~~

\$49.00

# Cybersecurity Forum 2020

## Who Should Attend?

Whether you are seeking a “best practices” approach to providing cybersecurity or will be required to meet the new federally mandated standards, this series of educational offerings provide an ever-changing model for responding to real cybersecurity risks that seemingly involve all aspects of our society. **Those recommended to attend include:**

- **IT Professionals**
- **Risk Managers**
- **Safety Professionals**
- **PEOs and Temporary Staffing Companies** providing services to companies in the DoD supply chain
- **Prime Contractors** seeking resiliency through ensuring that supply chain providers of services/products have the appropriate cybersecurity certifications
- **Attorneys**
- **HR Professionals**
- **Claims Adjusters**
- **Insurance Carriers/Self-Insureds/Third Party Administrators** (Liability coverages for risks related to cyber breaches including underwriting information obtained from companies in the defense supply chain)
- **Companies and Individuals seeking information on “best practices”** for cybersecurity and ways of protecting information
- **Company Managers** overseeing the conduct of employees for the purpose of protecting confidential information (cybersecurity risks are the concerns of the entire company not just to a few)
- **Companies desiring to do business planning for Florida operations** and the overall risks of a cyber breach (or for that matter any catastrophic event) on the state’s infrastructures

## Sponsorship Levels

Title – \$20,000

Gold – \$10,000

Silver – \$5,000

Bronze – \$3,000

Exhibitors – Starting at \$500

## Corporate Sponsors

As of 7/23/2020



U.S. Department of Defense  
Office of Economic Adjustment



All Points



BLUVECTOR®  
A COMCAST COMPANY



COMCAST  
NBCUNIVERSAL  
★★★★★  
SERVICE MATTERS

CENTER FOR  
CYBERSECURITY  
AT THE UNIVERSITY OF WEST FLORIDA



Florida Trend  
FLORIDA'S BUSINESS AUTHORITY



SPACE FLORIDA

SecureStrux



Please contact Janessa Burdette at [jburdette@aif.com](mailto:jburdette@aif.com) for more information or to sponsor this event.

▶▶▶ Register at [FAIF.org/Cybersecurity](http://FAIF.org/Cybersecurity)



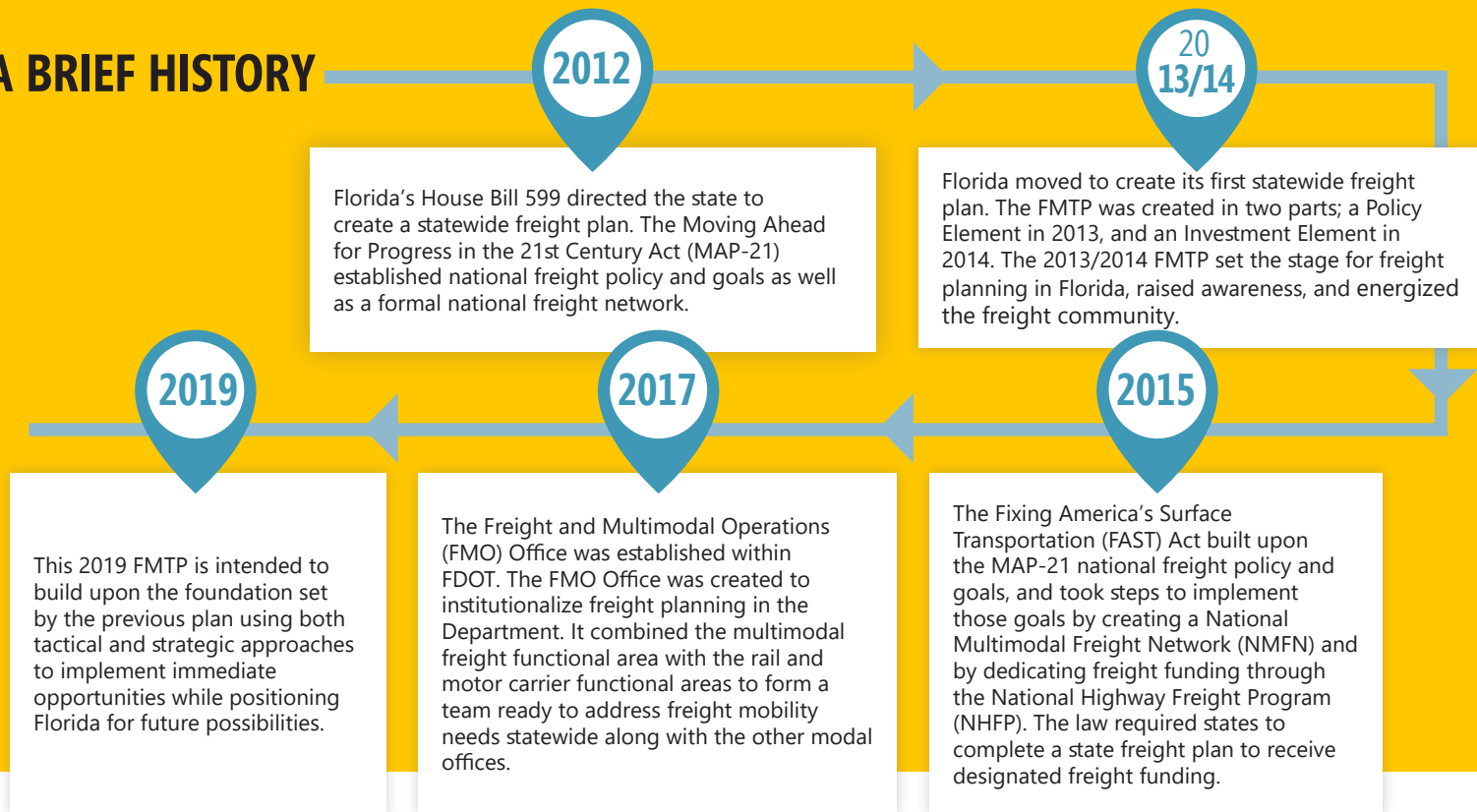
**TAB 6b**  
**Department of Transportation**



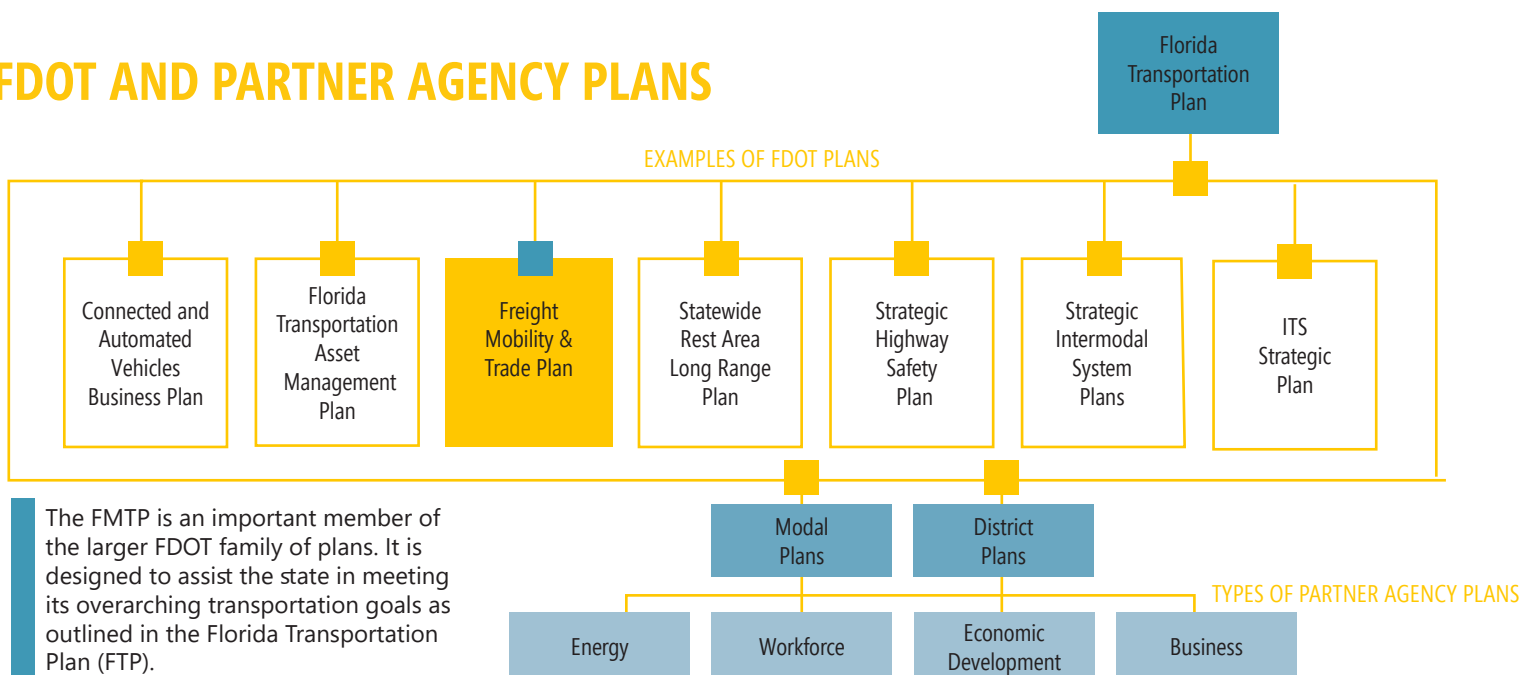
# ***Freight Mobility and Trade Plan***

*April 2020*

## A BRIEF HISTORY



## FDOT AND PARTNER AGENCY PLANS



## VISION TO IMPLEMENTATION



# FMTP OBJECTIVES

The 2019 FMTP uses the goals from the broader Florida Transportation Plan (FTP). The FMTP objectives were developed by examining goals and objectives from the FTP, FDOT Modal Plans, partner agency plans, as well as by incorporating feedback provided by the Florida Freight Advisory Committee (FLFAC). This crosswalk ensured that the FMTP objectives reflect Florida's collective freight vision and set the stage for collaborative implementation of the FMTP recommendations.

FTP GOALS		FMTP OBJECTIVES
Safety and security for residents, visitors and businesses	1	Leverage multisource data and technology to improve freight system safety and security
Agile, resilient, and quality transportation infrastructure	2	Create a more resilient multimodal freight system
	3	Ensure the Florida freight system is in a state of good repair
Connected, efficient, and reliable mobility for people and freight	4	Drive innovation to reduce congestion, bottlenecks and improve travel time reliability
Transportation choices that improve accessibility and equity	5	Remove institutional, policy and funding bottlenecks to improve operational efficiencies and reduce costs in supply chains
	6	Improve last mile connectivity for all freight modes
Transportation solutions that strengthen Florida's economy	7	Continue to forge partnerships between the public and private sectors to improve trade and logistics
	8	Capitalize on emerging freight trends to promote economic development
Transportation systems that enhance Florida's communities	9	Increase freight-related regional and local transportation planning and land use coordination
Transportation solutions that protect Florida's environment	10	Promote and support the shift to alternatively fueled freight vehicles

# POLICY IMPLEMENTATION

The implementation of freight policies sets conditions for improving Florida's freight system. A policy recommendation requires legislative action and/or organizational changes. Short-term implementation actions are meant to be initial steps that will facilitate the implementation of medium- and long-term policy initiatives. To ensure the success of Florida's freight system, continuous policy implementation is required to maintain an efficient regulatory environment. The graphic below highlights the strategic horizons of FMO's policy direction.

## SHORT-TERM POLICY IMPLEMENTATION



- Establish a Florida inter-agency freight mobility task force
- Define FDOT's role in advancing freight technology and merging freight data space
- Invest in technological solutions that increase efficiency and throughput
- Develop policy to designate CRFC and CUFC following federal guidelines and accommodating changing needs
- Work with the Systems Implementation Office to designate freight activity areas and freight access facilities for SIS funding eligibility
- Establish policy to define truck parking facility (as opposed to rest areas) and FDOT's role
- Update FDOT SIS and other intermodal capacity improvement programs to include truck parking
- Update rest area formula to adequately account for truck parking needs

## MEDIUM-TERM POLICY IMPLEMENTATION



- Provide incentives for private truck stop operators and communities to develop and expand truck stop services and parking capacity
- Establish freight performance targets consistent with the FHWA Transportation Performance Management requirements, in coordination with the MPO partners
- Develop a State Multimodal Freight Policy that is consistent with National Multimodal Freight Policy and meets the unique needs of Florida

## LONG-TERM POLICY IMPLEMENTATION



- Consider third party vendor-operations at public rest areas
- Establish a grant program with DEO to provide truck stop owners incentives to increase truck parking in areas of high need
- Develop strategies to mitigate the effects of freight transportation on communities, particularly minority and low-income communities, and the environment

## CONTINUOUS POLICY IMPLEMENTATION



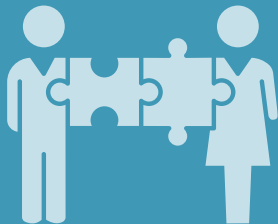
- Establish a continuous and inclusive public engagement policy to elevate FDOT freight awareness
- Provide freight planning guidance and assistance to MPOs and local government partners
- Identify and work to unbind policies that pose undue restrictions on technological improvements
- Improve communication with other Offices and Districts to facilitate understanding of policies

# PROGRAM IMPLEMENTATION

The institution of programs creates the structure by which FDOT maintains and enhances the state freight system. Programs are designed to improve internal processes, enhance stakeholder outreach and education, establish and strengthen public-private partnerships, develop network design guidelines and standards, and increase freight planning knowledge and awareness. The graphic below highlights the strategic horizons of FMO's programmatic direction.

## SHORT-TERM PROGRAM IMPLEMENTATION

- Enhance freight network designation process and implement freight project prioritization process during next funding cycle
- Develop a statewide truck parking program to address immediate needs and monitor progress over time
- Develop process for identifying and preparing projects for discretionary funding
- Develop a quarterly FMO newsletter to disseminate industry information and highlight program accomplishments



## MEDIUM-TERM PROGRAM IMPLEMENTATION

- Collaborate and support an awareness program with other agencies to educate Florida's workforce about careers in the freight transportation and logistics industry
- Develop a Florida freight resilience program
- Develop a truck parking program, in partnership with the private sector and local agencies, to identify locations and solutions to increase truck parking capacity



## LONG-TERM PROGRAM IMPLEMENTATION

- Support the development of freight infrastructure design criteria that promotes efficient and safe freight movement in urban areas
- Collaborate with the private sector and freight modal carriers to set conditions that will allow CAV and other technologies to be implemented
- Support private sector operational strategies to improve efficiencies and lower transportation costs, i.e. off-hour delivery, alternative fuels, truck route information, modal transload facilities, etc.



## CONTINUOUS PROGRAM IMPLEMENTATION

- Continue to work with FDLE to improve freight safety and security
- Continue to monitor structurally deficient bridges and pavement conditions
- Continue to invest in maintenance of freight facilities



**TAB 7**  
**Program Funding**

**TAB 7a**  
**Discussion and Review of Seaport**  
**Funding Spend Downs**



## Port Manatee

## INTERMODAL CARGO YARD IMPROVMENTS

FM#	Contract	Fund	FY	FSTED	Work Program	Port Match	Expiration		FY 15/16	FY 16/17	FY 17/18	FY 18/19	FY 19/20	FY 20/21	FY 21/22	Total	Expenditures	Balance
44425119402		DDR-I	23/24	\$0	\$2,284,982	\$2,284,982	U									\$2,284,982	\$0.00	\$2,284,982.00
44425119402		DDR-I	24/25	\$0	\$2,362,668	\$2,362,668	U									\$2,362,668	\$0.00	\$2,362,668.00
Total				\$0	\$4,647,650	\$4,647,650			\$0	\$0	\$0	\$0	\$0	\$0	\$0	\$4,647,650	\$0.00	\$4,647,650.00
% Complete																	0%	

## UPLAND CARGO IMPROVEMENTS [WAREHOUSE 6 MODERNIZATION]

FM#	Contract	Fund	FY	FSTED	Work Program	Port Match	Expiration		FY 15/16	FY 16/17	FY 17/18	FY 18/19	FY 19/20	FY 20/21	FY 21/22	Total	Expenditures	Balance
44427719402		PORT	20/21	\$2,250,000	\$0	\$2,250,000	A							\$2,250,000		\$2,250,000	\$0.00	\$2,250,000.00
Total				\$2,250,000	\$0	\$2,250,000			\$0	\$0	\$0	\$0	\$0	\$2,250,000	\$0	\$2,250,000	\$0.00	\$2,250,000.00
% Complete														0%			0%	

## BERTH REHAB &amp; RECONSTRUCT CAPITAL IMPROVEMENTS [BERTHS 6 THRU 11]

FM#	Contract	Fund	FY	FSTED	Work Program	Port Match	Expiration		FY 15/16	FY 16/17	FY 17/18	FY 18/19	FY 19/20	FY 20/21	FY 21/22	Total	Expenditures	Balance
43345719404	G1B91	PORT	19/20	\$1,500,000	\$0	\$500,000	06/30/24	A					\$1,500,000			\$1,500,000	\$0.00	\$1,500,000.00
Total				\$1,500,000	\$0	\$500,000			\$0	\$0	\$0	\$0	\$1,500,000	\$0	\$0	\$1,500,000	\$0.00	\$1,500,000.00
% Complete													0%				0%	

## RAILROAD IMPROVEMENT TRACK REBUILD

FM#	Contract	Fund	FY	FSTED	Work Program	Port Match	Expiration		FY 15/16	FY 16/17	FY 17/18	FY 18/19	FY 19/20	FY 20/21	FY 21/22	Total	Expenditures	Balance
44488719401	G1B90	PORT	19/20	\$327,235	\$0	\$327,235	06/30/24	A					\$327,235			\$327,235	\$0.00	\$327,235.00
Total				\$327,235	\$0	\$327,235			\$0	\$0	\$0	\$0	\$327,235	\$0	\$0	\$327,235	\$0.00	\$327,235.00
% Complete													0%				0%	

## UPLAND CARGO IMPROVEMENTS [FACILITIES REHAB]

FM#	Contract	Fund	FY	FSTED	Work Program	Port Match	Expiration		FY 15/16	FY 16/17	FY 17/18	FY 18/19	FY 19/20	FY 20/21	FY 21/22	Total	Expenditures	Balance
44427719403	G1I49	POED	19/20	\$0	\$1,413,583	\$1,413,583	01/31/25	A					\$1,413,583			\$1,413,583	\$0.00	\$1,413,583.00
Total				\$0	\$1,413,583	\$1,413,583			\$0	\$0	\$0	\$0	\$1,413,583	\$0	\$0	\$1,413,583	\$0.00	\$1,413,583.00
% Complete													0%				0%	

## SEAPORT SECURITY GRANT PROGRAM [VEHICLES]

FM#	Contract	Fund	FY	FSTED	Work Program	Port Match	Expiration		FY 15/16	FY 16/17	FY 17/18	FY 18/19	FY 19/20	FY 20/21	FY 21/22	Total	Expenditures	Balance
44494719402	G1I73	EM20	19/20	\$150,000	\$0	\$50,000	04/30/25	A					\$150,000			\$150,000	\$0.00	\$150,000.00
Total				\$150,000	\$0	\$50,000			\$0	\$0	\$0	\$0	\$150,000	\$0	\$0	\$150,000	\$0.00	\$150,000.00
% Complete													0%				0%	

## BERTH REHAB &amp; RECONSTRUCT CAPITAL IMPROVEMENTS [BERTH 4 THRU 11]

FM#	Contract	Fund	FY	FSTED	Work Program	Port Match	Expiration		FY 15/16	FY 16/17	FY 17/18	FY 18/19	FY 19/20	FY 20/21	FY 21/22	Total	Expenditures	Balance
43345719405	G1946	DIS	18/19	\$0	\$103,871	\$3,791,389	05/31/24	A				\$103,871				\$103,871	\$4,957.62	\$98,913.38
43345719405	G1946	DPTO	18/19	\$0	\$288,563		05/31/24	A				\$288,563				\$288,563	\$13,772.73	\$274,790.27
43345719405	G1946	GMR	18/19	\$0	\$7,826,624		05/31/24	A				\$7,826,624				\$7,826,624	\$373,554.33	\$7,453,069.67
43345719405	G1946	POED	18/19	\$0	\$3,155,108		05/31/24	A				\$3,155,108				\$3,155,108	\$0.00	\$3,155,108.00
Total				\$0	\$11,374,166	\$3,791,389			\$0	\$0	\$0	\$11,374,166	\$0	\$0	\$0	\$11,374,166	\$392,284.68	\$10,981,881.32
% Complete												3%					3%	

## RAILROAD IMPROVEMENTS [RAIL SYSTEM FUNDS]

FM#	Contract	Fund	FY	FSTED	Work Program	Port Match	Expiration		FY 15/16	FY 16/17	FY 17/18	FY 18/19	FY 19/20	FY 20/21	FY 21/22	Total	Expenditures	Balance
44488729401	G1548	DIS	18/19	\$0	\$45,449	\$45,449	02/28/24	A				\$45,449				\$45,449	\$45,435.37	\$13.63
Total				\$0	\$45,449	\$45,449			\$0	\$0	\$0	\$45,449	\$0	\$0	\$0	\$45,449	\$45,435.37	\$13.63
% Complete												100%					100%	

Disclaimer: This document is developed and distributed for grant management purposes.

DDR: District Dedicated Revenue   DIS: Strategic Intermodal   DPTO: District State Public Transportation   GMR: Growth Management Revenue   SIB: State Infrastructure Bank Loan   POED: Seaport Investment Program   PORB: PORT Funds Returned from Bonds Debt Service Refund   "I" = Intermodal Development Grant

PORT: Florida Seaport Transportation & Economic Development (FSTED) Council Deep Water Ports Program   DS: State Primary Highways & PTO   Red Font: Not JPA'd or PTGA'd   Purple Font: Pending Admin Activities   "U" / "A" = Un / Authorized   "C" = Closed   "D" = Dropped   "R" = Replaced

## Port Manatee *continued*

SEAPORT SECURITY GRANT PROGRAM [NORTH GATE EXPANSION]									FY 15/16	FY 16/17	FY 17/18	FY 18/19	FY 19/20	FY 20/21	FY 21/22	Total	Expenditures	Balance
FM#	Contract	Fund	FY	FSTED	Work Program	Port Match	Expiration											
44494719401	G1321	DPTO	18/19	\$250,000	\$0	\$83,333	11/30/21	A				\$250,000				\$250,000	\$39,286.25	\$210,713.75
Total				\$250,000	\$0	\$83,333			\$0	\$0	\$0	\$250,000	\$0	\$0	\$0	\$250,000	\$39,286.25	\$210,713.75
% Complete												16%					16%	
ROADWAY DESIGN & ENGINEERING									FY 15/16	FY 16/17	FY 17/18	FY 18/19	FY 19/20	FY 20/21	FY 21/22	Total	Expenditures	Balance
Total				\$0	\$29,999	\$30,000			\$0	\$0	\$0	\$29,999	\$0	\$0	\$0	\$30,000	\$29,999.99	\$0.00
% Complete												100%					100%	
COLD STORAGE WAREHOUSE IMPROVEMENTS [EXISTING FACILITIES]									FY 15/16	FY 16/17	FY 17/18	FY 18/19	FY 19/20	FY 20/21	FY 21/22	Total	Expenditures	Balance
FM#	Contract	Fund	FY	FSTED	Work Program	Port Match	Expiration											
44087519401	G0H58	DPTO-I	16/17	\$0	\$250,000	\$250,000	06/30/20	A		\$250,000						\$250,000	\$250,000.00	\$0.00
44087519402	G1242	PORT	18/19	\$500,000	\$0	\$500,000	11/30/21	A				\$500,000				\$500,000	\$27,782.22	\$472,217.78
Total				\$500,000	\$250,000	\$750,000			\$0	\$250,000	\$0	\$500,000	\$0	\$0	\$0	\$750,000	\$277,782.22	\$472,217.78
% Complete										100%		6%					37%	
UPLAND CARGO IMPROVEMENTS [REHAB & UPGRADE OF ROADWAYS]									FY 15/16	FY 16/17	FY 17/18	FY 18/19	FY 19/20	FY 20/21	FY 21/22	Total	Expenditures	Balance
FM#	Contract	Fund	FY	FSTED	Work Program	Port Match	Expiration											
44427719401	G1531	PORT	18/19	\$2,000,000	\$0	\$2,000,000	01/31/24	A				\$2,000,000				\$2,000,000	\$1,579,667.61	\$420,332.39
Total				\$2,000,000	\$0	\$2,000,000			\$0	\$0	\$0	\$2,000,000	\$0	\$0	\$0	\$2,000,000	\$1,579,667.61	\$420,332.39
% Complete												79%					79%	
INTERMODAL CARGO YARD IMPROVEMENTS [CONTAINER YARD PHASE II]									FY 15/16	FY 16/17	FY 17/18	FY 18/19	FY 19/20	FY 20/21	FY 21/22	Total	Expenditures	Balance
FM#	Contract	Fund	FY	FSTED	Work Program	Port Match	Expiration											
44425119401	G1527	GMR	18/19	\$0	\$2,625,000	\$3,875,000	01/31/24	A				\$2,625,000				\$2,625,000	\$150,025.43	\$2,474,974.57
44425119401	G1527	PORT	18/19	\$1,250,000	\$0	\$0	01/31/24	A				\$1,250,000				\$1,250,000	\$0.00	\$1,250,000.00
Total				\$1,250,000	\$2,625,000	\$3,875,000			\$0	\$0	\$0	\$3,875,000	\$0	\$0	\$0	\$3,875,000	\$150,025.43	\$3,724,974.57
% Complete												4%					4%	
BERTH REHAB & RECONSTRUCT CAPITAL IMPROVEMENTS [B9 REHAB, CATHODIC 4, 5, 12 & 14]									FY 15/16	FY 16/17	FY 17/18	FY 18/19	FY 19/20	FY 20/21	FY 21/22	Total	Expenditures	Balance
FM#	Contract	Fund	FY	FSTED	Work Program	Port Match	Expiration											
43345719401	AR789	PORB	13/14	\$76,723	\$0	\$692,241	07/01/20	C								\$76,723	\$76,723.00	\$0.00
43345719401	AR789	PORT	13/14	\$2,000,000	\$0	\$0	07/01/20	C								\$2,000,000	\$2,000,000.00	\$0.00
43345719402	AR790	POED	13/14	\$0	\$6,423,277	\$2,141,092	12/05/17	C								\$6,423,277	\$6,423,277.00	\$0.00
43345719403	AR789	PORT	14/15	\$1,300,000	\$0	\$433,333	07/01/21	A								\$1,300,000	\$583,572.27	\$716,427.73
43345719403	AR789	PORT	15/16	\$0	\$0	\$666,667	07/01/20	D								\$0	\$0.00	\$0.00
43907719401	G0C93	SIB1	16/17	\$0	\$0	[\$4,000,000]	12/31/37	A								\$0	\$0.00	\$0.00
Total				\$3,376,723	\$6,423,277	\$3,933,333			\$0	\$0	\$0	\$0	\$0	\$0	\$0	\$9,800,000	\$9,083,572.27	\$716,427.73
% Complete																	93%	
GRAND TOTAL				FSTED	Work Program	Port Match			FY 15/16	FY 16/17	FY 17/18	FY 18/19	FY 19/20	FY 20/21	FY 21/22	Total	Expenditures	Balance
				\$11,603,958	\$26,809,124	\$23,696,972			\$0	\$250,000	\$0	\$18,074,614	\$3,390,818	\$2,250,000	\$0	\$38,413,083	\$11,598,053.82	\$26,815,029.17
																	30%	

**Disclaimer:** This document is developed and distributed for grant management purposes.

**DDR:** District Dedicated Revenue **DIS:** Strategic Intermodal **DPTO:** District State Public Transportation **GMR:** Growth Management Revenue **SIB:** State Infrastructure Bank Loan **POED:** Seaport Investment Program **PORB:** PORT Funds Returned from Bonds Debt Service Refund **"I"** = Intermodal Development Grant

**PORT:** Florida Seaport Transportation & Economic Development (FSTED) Council Deep Water Ports Program **DS:** State Primary Highways & PTO **Red Font:** Not JPA'd or PTGA'd **Purple Font:** Pending Admin Activities **"U"** / **"A"** = Un / Authorized **"C"** = Closed **"D"** = Dropped **"R"** = Replaced

## Port of Fernandina

### CARGO IMPROVEMENTS [WAREHOUSE]

									FY 15/16	FY 16/17	FY 17/18	FY 18/19	FY 19/20	FY 20/21	FY 21/22	Total	Expenditures	Balance
FM#	Contract	Fund	FY	FTSD	Work Program	Port Match	Expiration											
43882619403		PORT	20/21	\$550,000	\$0	\$550,000	U							\$550,000		\$550,000	\$0.00	\$550,000.00
Total				\$550,000	\$0	\$550,000			\$0	\$0	\$0	\$0	\$0	\$550,000	\$0	\$550,000	\$0.00	\$550,000.00
% Complete														0%			0%	

### SEAPORT SECURITY GRANT PROGRAM [LIGHTING]

									FY 15/16	FY 16/17	FY 17/18	FY 18/19	FY 19/20	FY 20/21	FY 21/22	Total	Expenditures	Balance
FM#	Contract	Fund	FY	FTSD	Work Program	Port Match	Expiration											
44493319402	G1K57	EM20	19/20	\$24,573	\$0	\$8,191	03/31/24 A						\$24,573			\$24,573	\$0.00	\$24,573.00
Total				\$24,573	\$0	\$8,191			\$0	\$0	\$0	\$0	\$24,573	\$0	\$0	\$24,573	\$0.00	\$24,573.00
% Complete													0%				0%	

### CARGO IMPROVEMENTS [MASTER PLAN]

									FY 15/16	FY 16/17	FY 17/18	FY 18/19	FY 19/20	FY 20/21	FY 21/22	Total	Expenditures	Balance
FM#	Contract	Fund	FY	FTSD	Work Program	Port Match	Expiration											
43882619404	G1L46	PORT	19/20	\$118,000	\$0	\$118,000	11/30/24 A						\$118,000			\$118,000	\$0.00	\$118,000.00
Total				\$118,000	\$0	\$118,000			\$0	\$0	\$0	\$0	\$118,000	\$0	\$0	\$118,000	\$0.00	\$118,000.00
% Complete													0%				0%	

### MULTI PURPOSE DOCK CRANE & WAREHOUSE

									FY 15/16	FY 16/17	FY 17/18	FY 18/19	FY 19/20	FY 20/21	FY 21/22	Total	Expenditures	Balance
FM#	Contract	Fund	FY	FTSD	Work Program	Port Match	Expiration											
44340119401	G0Z02	EM19	18/19	\$0	\$2,000,000	\$0	09/30/20 A					\$2,000,000				\$2,000,000	\$1,999,633.95	\$366.05
44340119402	G1943	GMR	18/19	\$0	\$2,900,000	\$4,900,000	05/21/24 A					\$2,900,000				\$2,900,000	\$0.00	\$2,900,000.00
Total				\$0	\$4,900,000	\$4,900,000			\$0	\$0	\$0	\$4,900,000	\$0	\$0	\$0	\$4,900,000	\$1,999,633.95	\$2,900,366.05
% Complete												41%					41%	

### SEAPORT SECURITY GRANT PROGRAM [PORT WIDE LIGHTING]

									FY 15/16	FY 16/17	FY 17/18	FY 18/19	FY 19/20	FY 20/21	FY 21/22	Total	Expenditures	Balance
FM#	Contract	Fund	FY	FTSD	Work Program	Port Match	Expiration											
44493319401	G1700	DPT0	18/19	\$155,553	\$0	\$51,851	02/28/22 A					\$155,553				\$155,553	\$0.00	\$155,553.00
Total				\$155,553	\$0	\$51,851			\$0	\$0	\$0	\$155,553	\$0	\$0	\$0	\$155,553	\$0.00	\$155,553.00
% Complete												0%					0%	

### CARGO IMPROVEMENTS [WHARF MAINTENANCE & MAINTENANCE DREDGING]

									FY 15/16	FY 16/17	FY 17/18	FY 18/19	FY 19/20	FY 20/21	FY 21/22	Total	Expenditures	Balance
FM#	Contract	Fund	FY	FTSD	Work Program	Port Match	Expiration											
43882619401	G0L06	PORT	16/17	\$187,500	\$0	\$62,500	12/31/20 A			\$187,500						\$187,500	\$0.00	\$187,500.00
43882619401	G0L06	PORT	17/18	\$7,902	\$0	\$2,634	12/31/20 A				\$7,902					\$7,902	\$0.00	\$7,902.00
43882619402	G1938	PORT	18/19	\$378,966	\$0	\$376,322	05/31/24 A					\$378,966				\$378,966	\$36,956.38	\$342,009.62
43882619402	G1938	GMR	18/19	\$0	\$750,000		05/31/24 A					\$750,000				\$750,000	\$73,139.23	\$676,860.77
Total				\$574,368	\$750,000	\$441,456			\$0	\$187,500	\$7,902	\$1,128,966	\$0	\$0	\$0	\$1,324,368	\$110,095.61	\$1,214,272.39
% Complete										0%	0%	10%					8%	

### FENDER SYSTEM REPLACEMENT [FY15]

									FY 15/16	FY 16/17	FY 17/18	FY 18/19	FY 19/20	FY 20/21	FY 21/22	Total	Expenditures	Balance
FM#	Contract	Fund	FY	FTSD	Work Program	Port Match	Expiration											
Total				\$421,034	\$0	\$150,000			\$0	\$0	\$0	\$0	\$0	\$0	\$0	\$421,034	\$421,034.29	\$0.00
% Complete																	100%	

### PURCHASE OF CUSTOMS INSPECTIONS/SCALES [FY14]

									FY 15/16	FY 16/17	FY 17/18	FY 18/19	FY 19/20	FY 20/21	FY 21/22	Total	Expenditures	Balance
FM#	Contract	Fund	FY	FTSD	Work Program	Port Match	Expiration											
Total				\$67,098	\$0	\$75,000			\$0	\$0	\$0	\$0	\$0	\$0	\$0	\$67,098	\$67,098.92	\$0.00
% Complete																	100%	

### CONSTRUCT & INSTALLATION OF GRAIN SILO [R18>D19]

									FY 15/16	FY 16/17	FY 17/18	FY 18/19	FY 19/20	FY 20/21	FY 21/22	Total	Expenditures	Balance
FM#	Contract	Fund	FY	FTSD	Work Program	Port Match	Expiration											
Total				\$0	\$0	\$0			\$0	\$0	\$0	\$0	\$0	\$0	\$0	\$0	\$0.00	\$0.00
% Complete																		

**Disclaimer:** This document is developed and distributed for grant management purposes.

**DDR:** District Dedicated Revenue **DIS:** Strategic Intermodal **DPT0:** District State Public Transportation **GMR:** Growth Management Revenue **SIB:** State Infrastructure Bank Loan **POED:** Seaport Investment Program **PORB:** PORT Funds Returned from Bonds Debt Service Refund **"I"** = Intermodal Development Grant  
**PORT:** Florida Seaport Transportation & Economic Development (FTSD) Council Deep Water Ports Program **DS:** State Primary Highways & PTO **Red Font:** Not JPA'd or PTGA'd **Purple Font:** Pending Admin Activities **"U"** / **"A"** = Un / Authorized **"C"** = Closed **"D"** = Dropped **"R"** = Replaced

**Port of Fernandina** *continued*

CONSTRUCT & INSTALLATION OF LIGNIN STORAGE TANK [R18>D19]				FY 15/16	FY 16/17	FY 17/18	FY 18/19	FY 19/20	FY 20/21	FY 21/22	Total	Expenditures	Balance
Total	\$0	\$0	\$0	\$0	\$0	\$0	\$0	\$0	\$0	\$0	\$0	\$0.00	\$0.00
% Complete													
BERTH DREDGING [D18]				FY 15/16	FY 16/17	FY 17/18	FY 18/19	FY 19/20	FY 20/21	FY 21/22	Total	Expenditures	Balance
Total	\$0	\$0	\$0	\$0	\$0	\$0	\$0	\$0	\$0	\$0	\$0	\$0.00	\$0.00
% Complete													
WAREHOUSE EFFICIENCY IMPROVEMENTS [FY11-12]				FY 15/16	FY 16/17	FY 17/18	FY 18/19	FY 19/20	FY 20/21	FY 21/22	Total	Expenditures	Balance
Total	\$349,166	\$0	\$350,000	\$0	\$0	\$0	\$0	\$0	\$0	\$0	\$349,166	\$349,165.07	\$0.00
% Complete												100%	
GRAND TOTAL				FY 15/16	FY 16/17	FY 17/18	FY 18/19	FY 19/20	FY 20/21	FY 21/22	Total	Expenditures	Balance
	FSTED	Work Program	Port Match	\$0	\$187,500	\$7,902	\$6,184,519	\$142,573	\$550,000	\$0	\$7,909,792	\$2,947,027.84	\$4,962,764.44
												37%	

**Disclaimer:** This document is developed and distributed for grant management purposes.

**DDR:** District Dedicated Revenue **DIS:** Strategic Intermodal **DPTO:** District State Public Transportation **GMR:** Growth Management Revenue **SIB:** State Infrastructure Bank Loan **POED:** Seaport Investment Program **PORB:** PORT Funds Returned from Bonds Debt Service Refund **"I"** = Intermodal Development Grant  
**PORT:** Florida Seaport Transportation & Economic Development (FSTED) Council Deep Water Ports Program **DS:** State Primary Highways & PTO **Red Font:** Not JPA'd or PTGA'd **Purple Font:** Pending Admin Activities **"U"** / **"A"** = Un / Authorized **"C"** = Closed **"D"** = Dropped **"R"** = Replaced

## Jaxport

BLOUNT ISLAND BERTH IMPROVEMENTS [RELATED TO CHANNEL DEEPENING & WIDENING]									FY 15/16	FY 16/17	FY 17/18	FY 18/19	FY 19/20	FY 20/21	FY 21/22	Total	Expenditures	Balance
FM#	Contract	Fund	FY	FSTED	Work Program	Port Match	Expiration											
44026419401	G0Y96	PORT	18/19	\$3,300,000	\$0	\$1,100,000	12/31/24	C				\$3,300,000				\$3,300,000	\$3,300,000.00	\$0.00
44026439401	G0Y96	LF	18/19	\$0	\$0	\$13,600,000	12/31/24									\$0	\$0.00	\$0.00
4402643A801	G0Y96	DIS	20/21	\$0	\$15,000,000		12/31/24	U						\$15,000,000		\$15,000,000	\$0.00	\$15,000,000.00
4402643A801	G0Y96	DIS	21/22	\$0	\$3,914,391		12/31/24	U							\$3,914,391	\$3,914,391	\$0.00	\$3,914,391.00
4402643A801	G0Y96	GMR	21/22	\$0	\$16,585,609		12/31/24	U							\$16,585,609	\$16,585,609	\$0.00	\$16,585,609.00
4402643A801	G0Y96	GMR	22/23	\$0	\$5,300,000		12/31/24	U								\$5,300,000	\$0.00	\$5,300,000.00
44026419401		GMR	22/23	\$0	\$11,700,000	\$3,900,000		U								\$11,700,000	\$0.00	\$11,700,000.00
44026419401		DIS	23/24	\$0	\$13,125,000	\$4,375,000		U								\$13,125,000	\$0.00	\$13,125,000.00
44026419401		SIWR	24/25	\$0	\$9,825,000	\$3,275,000		U								\$9,825,000	\$0.00	\$9,825,000.00
Total				\$3,300,000	\$75,450,000	\$26,250,000			\$0	\$0	\$0	\$3,300,000	\$0	\$15,000,000	\$20,500,000	\$78,750,000	\$3,300,000.00	\$75,450,000.00
% Complete												100%		0%	0%		4%	

JAXPORT CHANNEL DEEPENING & WIDENING									FY 15/16	FY 16/17	FY 17/18	FY 18/19	FY 19/20	FY 20/21	FY 21/22	Total	Expenditures	Balance
FM#	Contract	Fund	FY	FSTED	Work Program	Port Match	Expiration											
43735619401	G0654	GMR	15/16	\$0	\$11,600,000	\$3,866,666	09/30/23	C	\$11,600,000							\$11,600,000	\$11,600,000.00	\$0.00
43735619401	G0654	GMR	16/17	\$0	\$8,993,840	\$2,900,000	09/30/23	C		\$8,993,840						\$8,993,840	\$8,993,840.23	\$0.00
43735619401	G0654	LF	17/18	\$0	\$0	\$13,827,174				\$0						\$0	\$0.00	\$0.00
43735619411	G0654	DPTO	17/18	\$0	\$14,000,000	\$15,552,389	09/30/23	C			\$14,000,000					\$14,000,000	\$14,000,000.00	\$0.00
43735619411	G0654	SIWR	17/18	\$0	\$1,552,389		09/30/23	C			\$1,552,389					\$1,552,389	\$1,552,389.00	\$0.00
43735629401	G1B77	SIB1	19/20	\$0	\$25,906,001		08/31/24	C				\$25,906,001				\$25,906,001	\$25,906,001.00	\$0.00
43735619415	G1B77	GMR	19/20	\$0	\$9,401,815	\$16,504,185	08/31/24	C				\$9,401,815				\$9,401,815	\$9,401,815	\$0.00
43735619421	G1K24	GMR	19/20	\$0	\$5,857,963	\$5,857,963	03/31/24	A				\$5,857,963				\$5,857,963	\$0.00	\$5,857,963.00
43735619421		GMR	20/21	\$0	\$35,245,625	\$40,245,626		U						\$35,245,625		\$35,245,625	\$0.00	\$35,245,625.00
43735619421		DIS	20/21	\$0	\$5,000,001			U						\$5,000,001		\$5,000,001	\$0.00	\$5,000,001.00
43735619421		DIS	21/22	\$0	\$16,085,610	\$24,706,772		U							\$16,085,610	\$16,085,610	\$0.00	\$16,085,610.00
43735619421		GMR	21/22	\$0	\$8,621,162			U							\$8,621,162	\$8,621,162	\$0.00	\$8,621,162.00
43735619421		DIS	22/23	\$0	\$20,000,000	\$30,800,561		U								\$20,000,000	\$0.00	\$20,000,000.00
43735619421		GMR	22/23	\$0	\$10,800,561			U								\$10,800,561	\$0.00	\$10,800,561.00
43735619421		DIS	23/24	\$0	\$6,875,000	\$32,560,397		U								\$6,875,000	\$0.00	\$6,875,000.00
43735619421		GMR	23/24	\$0	\$25,685,397			U								\$25,685,397	\$0.00	\$25,685,397.00
43735619421		GMR	24/25	\$0	\$17,817,389	\$17,817,389		U								\$17,817,389	\$0.00	\$17,817,389.00
Total				\$0	\$223,442,753	\$204,639,122			\$11,600,000	\$8,993,840	\$15,552,389	\$0	\$41,165,779	\$40,245,626	\$24,706,772	\$223,442,753	\$71,454,045.23	\$151,988,708.00
% Complete									100%	100%	100%		86%	0%	0%		32%	

[TR] TERMINAL CARGO IMPROVEMENTS [WHRF, BLDNGS, RAIL, GATE, EQUIP]								FY 15/16	FY 16/17	FY 17/18	FY 18/19	FY 19/20	FY 20/21	FY 21/22	Total	Expenditures	Balance
FM#	Contract	Fund	FY	FSTED	Work Program	Port Match	Expiration										
44682019401		PORT	20/21	\$1,156,250	\$0	\$1,156,250		U					\$1,156,250		\$1,156,250	\$0.00	\$1,156,250.00
Total				\$1,156,250	\$0	\$1,156,250			\$0	\$0	\$0	\$0	\$1,156,250	\$0	\$1,156,250	\$0.00	\$1,156,250.00
% Complete													0%			0%	

MAINTENANCE DREDGING [DREDGE MATERIAL MGMT AREA]								FY 15/16	FY 16/17	FY 17/18	FY 18/19	FY 19/20	FY 20/21	FY 21/22	Total	Expenditures	Balance
FM#	Contract	Fund	FY	FSTED	Work Program	Port Match	Expiration										
44681919401	G1P01	PORT	20/21	\$3,000,000	\$0	\$3,000,000	3/31/2025	A					\$3,000,000		\$3,000,000	\$0.00	\$3,000,000.00
Total				\$3,000,000	\$0	\$3,000,000			\$0	\$0	\$0	\$0	\$3,000,000	\$0	\$3,000,000	\$0.00	\$3,000,000.00
% Complete													0%			0%	

BLOUNT ISLAND UPLAND IMPROVEMENTS								FY 15/16	FY 16/17	FY 17/18	FY 18/19	FY 19/20	FY 20/21	FY 21/22	Total	Expenditures	Balance
FM#	Contract	Fund	FY	FSTED	Work Program	Port Match	Expiration										
44462319401	G1L95	PORT	19/20	\$2,150,000	\$0	\$2,150,000	11/29/24	A				\$2,150,000			\$2,150,000	\$0.00	\$2,150,000.00
Total				\$2,150,000	\$0	\$2,150,000			\$0	\$0	\$0	\$2,150,000	\$0	\$0	\$2,150,000	\$0.00	\$2,150,000.00
% Complete												0%				0%	

**Disclaimer:** This document is developed and distributed for grant management purposes.

**DDR:** District Dedicated Revenue **DIS:** Strategic Intermodal **DPTO:** District State Public Transportation **GMR:** Growth Management Revenue **SIB:** State Infrastructure Bank Loan **POED:** Seaport Investment Program **PORB:** PORT Funds Returned from Bonds Debt Service Refund **"I"** = Intermodal Development Grant

**PORT:** Florida Seaport Transportation & Economic Development (FSTED) Council Deep Water Ports Program **DS:** State Primary Highways & PTO **Red Font:** Not JPA'd or PTGA'd **Purple Font:** Pending Admin Activities **"U"** / **"A"** = Un / Authorized **"C"** = Closed **"D"** = Dropped **"R"** = Replaced

**Jaxport** *continued*

[ BI & DP ] IMPROVEMENTS [DPMT SHEET PILING AT BRIDGE]									FY 15/16	FY 16/17	FY 17/18	FY 18/19	FY 19/20	FY 20/21	FY 21/22	Total	Expenditures	Balance
FM#	Contract	Fund	FY	FSTED	Work Program	Port Match	Expiration											
43739119405	G1M54	PORT	19/20	\$1,700,000	\$0	\$1,700,000	10/31/24	A					\$1,700,000			\$1,700,000	\$0.00	\$1,700,000.00
<b>Total</b>									\$0	\$0	\$0	\$0	\$1,700,000	\$0	\$0	\$1,700,000	\$0.00	\$1,700,000.00
<b>% Complete</b>													0%				0%	
SEAPORT SECURITY GRANT PROGRAM [CCTV SOFTWARE, ACCESS CONTROL, SCREENING ENHANCE]									FY 15/16	FY 16/17	FY 17/18	FY 18/19	FY 19/20	FY 20/21	FY 21/22	Total	Expenditures	Balance
FM#	Contract	Fund	FY	FSTED	Work Program	Port Match	Expiration											
44493019402	G1L70	EM20	19/20	\$116,250	\$0	\$38,750	03/31/24	A					\$116,250			\$116,250	\$0.00	\$116,250.00
<b>Total</b>									\$0	\$0	\$0	\$0	\$116,250	\$0	\$0	\$116,250	\$0.00	\$116,250.00
<b>% Complete</b>													0%				0%	
SEAPORT SECURITY GRANT PROGRAM [ACCESS CONTROL READERS / LICENSE PLATE READERS]									FY 15/16	FY 16/17	FY 17/18	FY 18/19	FY 19/20	FY 20/21	FY 21/22	Total	Expenditures	Balance
FM#	Contract	Fund	FY	FSTED	Work Program	Port Match	Expiration											
44493019401	G1604	DPTO	18/19	\$72,938	\$0	\$24,312	02/28/22	A				\$72,938				\$72,938	\$0.00	\$72,938.00
<b>Total</b>									\$0	\$0	\$0	\$72,938	\$0	\$0	\$0	\$72,938	\$0.00	\$72,938.00
<b>% Complete</b>												0%					0%	
[TR] TERMINAL WHARF/BULKHEAD RECONSTRUCTION IMPROVEMEN [BERTH 7 & 8]									FY 15/16	FY 16/17	FY 17/18	FY 18/19	FY 19/20	FY 20/21	FY 21/22	Total	Expenditures	Balance
FM#	Contract	Fund	FY	FSTED	Work Program	Port Match	Expiration											
43145719403	GO084	PORT	17/18	\$3,500,000	\$0	\$1,166,667	09/30/20	A			\$3,500,000					\$3,500,000	\$1,859,895.75	\$1,640,104.25
<b>Total</b>									\$0	\$0	\$3,500,000	\$0	\$0	\$0	\$0	\$3,500,000	\$1,859,895.75	\$1,640,104.25
<b>% Complete</b>											53%						53%	
[ BI & TR ] MARINE TERMINAL IMPROVEMENTS [UPLAND: GATE, UTILITY, PAVING, WAREHSE MOD]									FY 15/16	FY 16/17	FY 17/18	FY 18/19	FY 19/20	FY 20/21	FY 21/22	Total	Expenditures	Balance
FM#	Contract	Fund	FY	FSTED	Work Program	Port Match	Expiration											
41264889406	G0G95	PORT	16/17	\$900,000	\$0	\$900,000	09/30/19	C		\$900,000						\$900,000	\$900,000.00	\$0.00
41264889407		DPTO-I	16/17	\$0	\$0	\$0		D		\$0						\$0	\$0.00	\$0.00
41264889407	G0G95	GMR	16/17	\$0	\$3,000,000	\$4,000,000	03/31/22	A		\$3,000,000						\$3,000,000	\$899,167.40	\$2,100,832.60
41264889407	G0G95	PORT	16/17	\$1,000,000	\$0		03/31/22	A		\$1,000,000						\$1,000,000	\$299,722.47	\$700,277.53
<b>Total</b>									\$0	\$4,900,000	\$0	\$0	\$0	\$0	\$0	\$4,900,000	\$2,098,889.87	\$2,801,110.13
<b>% Complete</b>										43%							43%	
TALLEYRAND MARINE TERMINAL WHARF/BULKHEAD RECONSTRUCTION IMPROVEMEN									FY 15/16	FY 16/17	FY 17/18	FY 18/19	FY 19/20	FY 20/21	FY 21/22	Total	Expenditures	Balance
<b>Total</b>									\$0	\$4,000,000	\$0	\$0	\$0	\$0	\$0	\$10,898,000	\$10,898,000.00	\$0.00
<b>% Complete</b>										100%							100%	
BLOUNT ISLAND/DAMES POINT IMPROVEMENTS									FY 15/16	FY 16/17	FY 17/18	FY 18/19	FY 19/20	FY 20/21	FY 21/22	Total	Expenditures	Balance
FM#	Contract	Fund	FY	FSTED	Work Program	Port Match	Expiration											
43739119401	AR372	GMR	15/16	\$0	\$7,500,000	\$7,500,000	09/30/20	A	\$7,500,000							\$7,500,000	\$7,500,000.00	\$0.00
43739119402	G0625	DPTO-I	15/16	\$0	\$382,956	\$382,956	03/30/18	C	\$382,956							\$382,956	\$382,956.00	\$0.00
43739119403	G0625	POED	15/16	\$0	\$367,044	\$367,044	03/30/18	C	\$367,044							\$367,044	\$367,044.00	\$0.00
43739119404	AR614	GMR	15/16	\$0	\$1,500,000	\$1,500,000	10/03/18	C	\$1,500,000							\$1,500,000	\$1,500,000.00	\$0.00
<b>Total</b>									\$9,750,000	\$0	\$0	\$0	\$0	\$0	\$0	\$9,750,000	\$9,750,000.00	\$0.00
<b>% Complete</b>									85%								100%	
GRAND TOTAL									FY 15/16	FY 16/17	FY 17/18	FY 18/19	FY 19/20	FY 20/21	FY 21/22	Total	Expenditures	Balance
				\$23,793,438	\$315,642,753	\$261,141,102			\$21,350,000	\$17,893,840	\$19,052,389	\$3,372,938	\$45,132,029	\$59,401,876	\$45,206,772	\$339,436,191	\$99,360,830.85	\$240,075,360.38
																	29%	

**Disclaimer:** This document is developed and distributed for grant management purposes.

**DDR:** District Dedicated Revenue **DIS:** Strategic Intermodal **DPTO:** District State Public Transportation **GMR:** Growth Management Revenue **SIB:** State Infrastructure Bank Loan **POED:** Seaport Investment Program **PORB:** PORT Funds Returned from Bonds Debt Service Refund "I" = Intermodal Development Grant  
**PORT:** Florida Seaport Transportation & Economic Development (FSTED) Council Deep Water Ports Program **DS:** State Primary Highways & PTO **Red Font:** Not JPA'd or PTGA'd **Purple Font:** Pending Admin Activities "U" / "A" = Un / Authorized "C" = Closed "D" = Dropped "R" = Replaced

## Port Panama City

### EAST TERMINAL RAIL IMPROVEMENTS [PAPERMILL - RAIL SYSTEM FUNDS]

	FM#	Contract	Fund	FY	FSTED	Work Program	Port Match	Expiration		FY 15/16	FY 16/17	FY 17/18	FY 18/19	FY 19/20	FY 20/21	FY 21/22	Total	Expenditures	Balance
	44496919401		DIS	21/22	\$0	\$700,000	\$233,333	U								\$700,000	\$700,000	\$0.00	\$700,000.00
	44496919401	G1901	GMR	18/19	\$0	\$350,000	\$116,667	03/31/24 A					\$350,000	\$0	\$0	\$700,000	\$350,000	\$0.00	\$350,000.00
Total					\$0	\$1,050,000	\$350,000			\$0	\$0	\$0	\$350,000	\$0	\$0	\$700,000	\$1,050,000	\$0.00	\$1,050,000.00
% Complete													0%			0%		0%	

### MOBILE HARBOR CRANE

	FM#	Contract	Fund	FY	FSTED	Work Program	Port Match	Expiration		FY 15/16	FY 16/17	FY 17/18	FY 18/19	FY 19/20	FY 20/21	FY 21/22	Total	Expenditures	Balance
	42836439402		PORT	20/21	\$2,150,000	\$0	\$2,150,000	U							\$2,150,000		\$2,150,000	\$0.00	\$2,150,000.00
Total					\$2,150,000	\$0	\$2,150,000			\$0	\$0	\$0	\$0	\$0	\$2,150,000	\$0	\$2,150,000	\$0.00	\$2,150,000.00
% Complete															0%			0%	

### TERMINAL IMPROVEMENTS [CONTAINER FREIGHT STATION & WAREHOUSE REBUILD]

	FM#	Contract	Fund	FY	FSTED	Work Program	Port Match	Expiration		FY 15/16	FY 16/17	FY 17/18	FY 18/19	FY 19/20	FY 20/21	FY 21/22	Total	Expenditures	Balance
	43876319404	G1638	DIS	18/19	\$0	\$150,000	\$150,000	03/31/24 A					\$150,000				\$150,000	\$0.00	\$150,000.00
	43876319404	G1638	PORT	19/20	\$2,000,000	\$0	\$2,100,000	03/31/24 A						\$2,000,000			\$2,000,000	\$0.00	\$2,000,000.00
	43876319404	G1638	DIS	19/20	\$0	\$100,000		03/31/24 A						\$100,000			\$100,000	\$0.00	\$100,000.00
Total					\$2,000,000	\$250,000	\$2,250,000			\$0	\$0	\$0	\$150,000	\$2,100,000	\$0	\$0	\$2,250,000	\$0.00	\$2,250,000.00
% Complete													0%	0%				0%	

### BERTH 3 DREDGING [WEST TERMINAL]

	FM#	Contract	Fund	FY	FSTED	Work Program	Port Match	Expiration		FY 15/16	FY 16/17	FY 17/18	FY 18/19	FY 19/20	FY 20/21	FY 21/22	Total	Expenditures	Balance
	42836469401	G1950	GMR	18/19	\$0	\$525,000	\$175,000	05/31/24 A					\$525,000				\$525,000	\$0.00	\$525,000.00
Total					\$0	\$525,000	\$175,000			\$0	\$0	\$0	\$525,000	\$0	\$0	\$0	\$525,000	\$0.00	\$525,000.00
% Complete													0%					0%	

### TERMINAL IMPROVEMENTS [EAST TERMINAL - REINFORCE BERTH]

	FM#	Contract	Fund	FY	FSTED	Work Program	Port Match	Expiration		FY 15/16	FY 16/17	FY 17/18	FY 18/19	FY 19/20	FY 20/21	FY 21/22	Total	Expenditures	Balance
	43876319402	G0E39	GMR	16/17	\$0	\$4,500,000	\$1,500,000	08/31/21 C			\$4,500,000						\$4,500,000	\$4,500,000.00	\$0.00
	43876319406	G1809	DIS	18/19	\$0	\$4,050,000	\$1,350,000	04/30/24 A						\$4,050,000			\$4,050,000	\$4,050,000.00	\$0.00
Total					\$0	\$8,550,000	\$2,850,000			\$0	\$4,500,000	\$0	\$0	\$4,050,000	\$0	\$0	\$8,550,000	\$8,550,000.00	\$0.00
% Complete											100%			100%				100%	

### DREDGING [EAST TERMINAL - BERTH DREDGING RELATED TO CHANNEL DEEPENING]

	FM#	Contract	Fund	FY	FSTED	Work Program	Port Match	Expiration		FY 15/16	FY 16/17	FY 17/18	FY 18/19	FY 19/20	FY 20/21	FY 21/22	Total	Expenditures	Balance
	41818229402	G1759	GMR	18/19	\$0	\$725,000	\$241,667	04/30/24 A					\$725,000				\$725,000	\$0.00	\$725,000.00
Total					\$0	\$725,000	\$241,667			\$0	\$0	\$0	\$725,000	\$0	\$0	\$0	\$725,000	\$0.00	\$725,000.00
% Complete													0%					0%	

### TERMINAL IMPROVEMENTS [EAST TERMINAL - WAREHOUSE/CARGO/LIGHTS/GATES/ROAD/RAIL]

	FM#	Contract	Fund	FY	FSTED	Work Program	Port Match	Expiration		FY 15/16	FY 16/17	FY 17/18	FY 18/19	FY 19/20	FY 20/21	FY 21/22	Total	Expenditures	Balance
	43876319401	G0E35	PORT	16/17	\$1,500,000	\$0	\$5,750,000	08/31/21 C			\$1,500,000						\$1,500,000	\$1,500,000.00	\$0.00
	43876319401	G0E35	GMR	16/17	\$0	\$4,250,000		08/31/21 C			\$4,250,000						\$4,250,000	\$4,250,000.00	\$0.00
	43876319403	G0U22	PORT	17/18	\$2,500,000	\$0	\$3,000,000	01/31/23 C				\$2,500,000					\$2,500,000	\$2,500,000.00	\$0.00
	43876319403	G0U22	DIS	17/18	\$0	\$500,000		01/31/23 C				\$500,000					\$500,000	\$500,000.00	\$0.00
	43876319405	G1808	PORT	18/19	\$1,539,300	\$0	\$5,125,300	04/30/24 A					\$1,539,300				\$1,539,300	\$1,110,899.79	\$428,400.21
	43876319405	G1808	DIS	18/19	\$0	\$45,293		04/30/24 A					\$45,293				\$45,293	\$32,687.57	\$12,605.43
	43876319405	G1808	GMR	18/19	\$0	\$3,540,707		04/30/24 A					\$3,540,707				\$3,540,707	\$2,555,298.30	\$985,408.70
Total					\$5,539,300	\$8,336,000	\$13,875,300			\$0	\$5,750,000	\$3,000,000	\$5,125,300	\$0	\$0	\$0	\$13,875,300	\$12,448,885.66	\$1,426,414.34
% Complete											100%	100%	72%					90%	

**Disclaimer:** This document is developed and distributed for grant management purposes.

**DDR:** District Dedicated Revenue **DIS:** Strategic Intermodal **DPTO:** District State Public Transportation **GMR:** Growth Management Revenue **SIB:** State Infrastructure Bank Loan **POED:** Seaport Investment Program **PORB:** PORT Funds Returned from Bonds Debt Service Refund **"I"** = Intermodal Development Grant

**PORT:** Florida Seaport Transportation & Economic Development (FSTED) Council Deep Water Ports Program **DS:** State Primary Highways & PTO **Red Font:** Not JPA'd or PTGA'd **Purple Font:** Pending Admin Activities **"U" / "A"** = Un / Authorized **"C"** = Closed **"D"** = Dropped **"R"** = Replaced

## Port Panama City *continued*

BULK STORAGE EXPANSION [CEMENT DOME]									FY 15/16	FY 16/17	FY 17/18	FY 18/19	FY 19/20	FY 20/21	FY 21/22	Total	Expenditures	Balance
FM#	Contract	Fund	FY	FSTED	Work Program	Port Match	Expiration											
43482839401	G0U21	GMR	17/18		\$0	\$2,750,000	\$2,750,000	01/31/23 A			\$2,750,000					\$2,750,000	\$0.00	\$2,750,000.00
Total									\$0	\$0	\$2,750,000	\$0	\$0	\$0	\$0	\$2,750,000	\$0.00	\$2,750,000.00
% Complete											0%						0%	

BERTH IMPROVEMENTS/BULKHEAD CAPACITY EXPANSION [FILLING OCEANEERING SLIP]									FY 15/16	FY 16/17	FY 17/18	FY 18/19	FY 19/20	FY 20/21	FY 21/22	Total	Expenditures	Balance
FM#	Contract	Fund	FY	FSTED	Work Program	Port Match	Expiration											
43482819401	G0U20	DIS	17/18		\$0	\$93,250	\$1,381,084	01/31/23 A			\$93,250					\$93,250	\$0.00	\$93,250.00
43482819401	G0U20	GMR	17/18		\$0	\$1,350,000		01/31/23 A			\$1,350,000					\$1,350,000	\$0.00	\$1,350,000.00
Total									\$0	\$0	\$1,443,250	\$0	\$0	\$0	\$0	\$1,443,250	\$0.00	\$1,443,250.00
% Complete											0%						0%	

DREDGING [TO DEEPEN EAST CHANNEL]									FY 15/16	FY 16/17	FY 17/18	FY 18/19	FY 19/20	FY 20/21	FY 21/22	Total	Expenditures	Balance
FM#	Contract	Fund	FY	FSTED	Work Program	Port Match	Expiration											
41818229401	G0E43	GMR	16/17		\$0	\$2,315,000	\$2,315,000	08/31/21 A			\$2,315,000					\$2,315,000	\$294,500.00	\$2,020,500.00
Total									\$0	\$2,315,000	\$0	\$0	\$0	\$0	\$0	\$2,315,000	\$294,500.00	\$2,020,500.00
% Complete										13%							13%	

CONTAINER TERMINAL EXPANSION									FY 15/16	FY 16/17	FY 17/18	FY 18/19	FY 19/20	FY 20/21	FY 21/22	Total	Expenditures	Balance
Total									\$781,489	\$0	\$781,489	\$0	\$0	\$0	\$0	\$781,489	\$781,489.00	\$0.00
% Complete										100%							100%	

GRAND TOTAL									FY 15/16	FY 16/17	FY 17/18	FY 18/19	FY 19/20	FY 20/21	FY 21/22	Total	Expenditures	Balance
				FSTED	Work Program	Port Match			\$0	\$12,572,089	\$7,193,250	\$6,875,300	\$6,150,000	\$2,150,000	\$700,000	\$36,415,039	\$22,074,874.66	\$14,340,164.34
																	61%	

**Disclaimer:** This document is developed and distributed for grant management purposes.

**DDR:** District Dedicated Revenue **DIS:** Strategic Intermodal **DPTO:** District State Public Transportation **GMR:** Growth Management Revenue **SIB:** State Infrastructure Bank Loan **POED:** Seaport Investment Program **PORB:** PORT Funds Returned from Bonds Debt Service Refund **"I"** = Intermodal Development Grant

**PORT:** Florida Seaport Transportation & Economic Development (FSTED) Council Deep Water Ports Program **DS:** State Primary Highways & PTO **Red Font:** Not JPA'd or PTGA'd **Purple Font:** Pending Admin Activities **"U"** / **"A"** = Un / Authorized **"C"** = Closed **"D"** = Dropped **"R"** = Replaced



## Port of Pensacola

### SEAPORT SECURITY GRANT PROGRAM [ACCESS CONTROL EQUIP / SYSTEM MAINTENANCE]

	FM#	Contract	Fund	FY	FSTED	Work Program	Port Match	Expiration		FY 15/16	FY 16/17	FY 17/18	FY 18/19	FY 19/20	FY 20/21	FY 21/22	Total	Expenditures	Balance
	42235439402	G1J67	EM20	19/20	\$35,027	\$0	\$11,676	11/30/24	A						\$35,027		\$35,027	\$0.00	\$35,027.00
<b>Total</b>					<b>\$35,027</b>	<b>\$0</b>	<b>\$11,676</b>			<b>\$0</b>	<b>\$0</b>	<b>\$0</b>	<b>\$0</b>	<b>\$35,027</b>	<b>\$0</b>	<b>\$0</b>	<b>\$35,027</b>	<b>\$0.00</b>	<b>\$35,027.00</b>
<b>% Complete</b>														0%				0%	

### UPLAND CARGO IMPROVEMENTS

	FM#	Contract	Fund	FY	FSTED	Work Program	Port Match	Expiration		FY 15/16	FY 16/17	FY 17/18	FY 18/19	FY 19/20	FY 20/21	FY 21/22	Total	Expenditures	Balance
	44554819401	G1960	DPTO	18/19	\$0	\$225,000	\$225,000	05/31/24	A				\$225,000				\$225,000	\$42,593.46	\$182,406.54
<b>Total</b>					<b>\$0</b>	<b>\$225,000</b>	<b>\$225,000</b>			<b>\$0</b>	<b>\$0</b>	<b>\$0</b>	<b>\$225,000</b>	<b>\$0</b>	<b>\$0</b>	<b>\$0</b>	<b>\$225,000</b>	<b>\$42,593.46</b>	<b>\$182,406.54</b>
<b>% Complete</b>													19%					19%	

### BERTH IMPROVEMENTS

	FM#	Contract	Fund	FY	FSTED	Work Program	Port Match	Expiration		FY 15/16	FY 16/17	FY 17/18	FY 18/19	FY 19/20	FY 20/21	FY 21/22	Total	Expenditures	Balance
	44554919401	G1959	DPTO	18/19	\$0	\$225,000	\$75,000	05/31/24	A				\$225,000				\$225,000	\$376.07	\$224,623.93
<b>Total</b>					<b>\$0</b>	<b>\$225,000</b>	<b>\$75,000</b>			<b>\$0</b>	<b>\$0</b>	<b>\$0</b>	<b>\$225,000</b>	<b>\$0</b>	<b>\$0</b>	<b>\$0</b>	<b>\$225,000</b>	<b>\$376.07</b>	<b>\$224,623.93</b>
<b>% Complete</b>													0%					0%	

### MAINTENANCE DREDGING

	FM#	Contract	Fund	FY	FSTED	Work Program	Port Match	Expiration		FY 15/16	FY 16/17	FY 17/18	FY 18/19	FY 19/20	FY 20/21	FY 21/22	Total	Expenditures	Balance
	44102729401	G1654	PORT	18/19	\$110,700	\$0	\$36,900	03/31/24	A				\$110,700				\$110,700	\$24,161.20	\$86,538.80
<b>Total</b>					<b>\$110,700</b>	<b>\$0</b>	<b>\$36,900</b>			<b>\$0</b>	<b>\$0</b>	<b>\$0</b>	<b>\$110,700</b>	<b>\$0</b>	<b>\$0</b>	<b>\$0</b>	<b>\$110,700</b>	<b>\$24,161.20</b>	<b>\$86,538.80</b>
<b>% Complete</b>													22%					22%	

### SEAPORT SECURITY GRANT PROGRAM [ACCESS CONTROL EQUIP / SYSTEM MAINTENANCE]

										FY 15/16	FY 16/17	FY 17/18	FY 18/19	FY 19/20	FY 20/21	FY 21/22	Total	Expenditures	Balance
<b>Total</b>					<b>\$18,750</b>	<b>\$0</b>	<b>\$6,250</b>			<b>\$0</b>	<b>\$0</b>	<b>\$0</b>	<b>\$18,750</b>	<b>\$0</b>	<b>\$0</b>	<b>\$0</b>	<b>\$18,750</b>	<b>\$18,750.00</b>	<b>\$0.00</b>
<b>% Complete</b>													100%					100%	

### FERRY TERMINAL

	FM#	Contract	Fund	FY	FSTED	Work Program	Port Match	Expiration		FY 15/16	FY 16/17	FY 17/18	FY 18/19	FY 19/20	FY 20/21	FY 21/22	Total	Expenditures	Balance
	44102719401	G0K29	PORT	16/17	\$551,153	\$0	\$2,077,145	02/28/22	A								\$551,153	\$551,152.92	\$0.00
	44102719401	G0K29	PORB	16/17	\$137,500	\$0		02/28/22	A								\$137,500	\$137,499.98	\$0.00
<b>Total</b>					<b>\$688,653</b>	<b>\$0</b>	<b>\$2,077,145</b>			<b>\$0</b>	<b>\$688,653</b>	<b>\$0</b>	<b>\$0</b>	<b>\$0</b>	<b>\$0</b>	<b>\$0</b>	<b>\$688,653</b>	<b>\$688,652.90</b>	<b>\$0.00</b>
<b>% Complete</b>											100%							100%	

### BERTH 6 REHAB

	FM#	Contract	Fund	FY	FSTED	Work Program	Port Match	Expiration		FY 15/16	FY 16/17	FY 17/18	FY 18/19	FY 19/20	FY 20/21	FY 21/22	Total	Expenditures	Balance
	42315169401	AR223	PORB	12/13	\$310,000	\$0	\$650,000	07/31/20	A								\$310,000	\$310,000.00	\$0.00
	42315169401	AR223	PORT	12/13	\$1,640,000	\$0		07/31/20	A								\$1,640,000	\$1,640,000.00	\$0.00
	42315169401	AR223	PORT	14/15	\$329,381	\$0	\$112,378	07/31/20	A								\$329,381	\$329,381.00	\$0.00
	42315169401	AR223	DS	15/16	\$0	\$7,754	\$6,212	07/31/20	A		\$7,754						\$7,754	\$7,754.00	\$0.00
	42315169401	AR223	PORT	15/16	\$10,882	\$0		07/31/20	A		\$10,882						\$10,882	\$10,882.00	\$0.00
	42315169402	AR223	PORT	16/17	\$840,000	\$0	\$280,000	07/31/20	A			\$840,000					\$840,000	\$86,938.52	\$753,061.48
<b>Total</b>					<b>\$3,130,263</b>	<b>\$7,754</b>	<b>\$1,048,590</b>			<b>\$18,636</b>	<b>\$840,000</b>	<b>\$0</b>	<b>\$0</b>	<b>\$0</b>	<b>\$0</b>	<b>\$0</b>	<b>\$3,138,017</b>	<b>\$2,384,955.52</b>	<b>\$753,061.48</b>
<b>% Complete</b>										100%	10%							76%	

### GRAND TOTAL

					FSTED	Work Program	Port Match			FY 15/16	FY 16/17	FY 17/18	FY 18/19	FY 19/20	FY 20/21	FY 21/22	Total	Expenditures	Balance
					<b>\$3,983,393</b>	<b>\$457,754</b>	<b>\$3,480,561</b>			<b>\$18,636</b>	<b>\$1,528,653</b>	<b>\$0</b>	<b>\$579,450</b>	<b>\$35,027</b>	<b>\$0</b>	<b>\$0</b>	<b>\$4,441,147</b>	<b>\$3,159,489.15</b>	<b>\$1,281,657.75</b>
																			71%

**Disclaimer:** This document is developed and distributed for grant management purposes.

**DDR:** District Dedicated Revenue **DIS:** Strategic Intermodal **DPTO:** District State Public Transportation **GMR:** Growth Management Revenue **SIB:** State Infrastructure Bank Loan **POED:** Seaport Investment Program **PORB:** PORT Funds Returned from Bonds Debt Service Refund **"I"** = Intermodal Development Grant

**PORT:** Florida Seaport Transportation & Economic Development (FSTED) Council Deep Water Ports Program **DS:** State Primary Highways & PTO **Red Font:** Not JPA'd or PTGA'd **Purple Font:** Pending Admin Activities **"U"** / **"A"** = Un / Authorized **"C"** = Closed **"D"** = Dropped **"R"** = Replaced

Port St. Joe

STRATEGIC PLAN									FY 15/16	FY 16/17	FY 17/18	FY 18/19	FY 19/20	FY 20/21	FY 21/22	Total	Expenditures	Balance
FM#	Contract	Fund	FY	FSTED	Work Program	Port Match	Expiration											
43578339401	G1169	PORT	19/20	\$200,000	\$0	\$0	A						\$200,000			\$200,000	\$0.00	\$200,000.00
Total				\$200,000	\$0	\$0			\$0	\$0	\$0	\$0	\$200,000	\$0	\$0	\$200,000	\$0.00	\$200,000.00
% Complete													0%				0%	

UPLAND SITE & FACILITY IMPROVEMENT									FY 15/16	FY 16/17	FY 17/18	FY 18/19	FY 19/20	FY 20/21	FY 21/22	Total	Expenditures	Balance
Total				\$0	\$3,500	\$3,500			\$0	\$0	\$3,500	\$0	\$0	\$0	\$0	\$3,500	\$3,500.00	\$0.00
% Complete											100%						100%	

CHANNEL DREDGING									FY 15/16	FY 16/17	FY 17/18	FY 18/19	FY 19/20	FY 20/21	FY 21/22	Total	Expenditures	Balance
FM#	Contract	Fund	FY	FSTED	Work Program	Port Match	Expiration											
43578319401	G0609	GMR	15/16	\$0	\$1,000,000	\$0	10/31/20	A	\$1,000,000							\$1,000,000	\$753,800.00	\$246,200.00
Total				\$0	\$1,000,000	\$0			\$1,000,000	\$0	\$0	\$0	\$0	\$0	\$0	\$1,000,000	\$753,800.00	\$246,200.00
% Complete									75%								75%	

DREDGING STUDY [FY13]									FY 15/16	FY 16/17	FY 17/18	FY 18/19	FY 19/20	FY 20/21	FY 21/22	Total	Expenditures	Balance
Total				\$0	\$750,000	\$250,000			\$0	\$0	\$0	\$0	\$0	\$0	\$0	\$750,000	\$750,000.00	\$0.00
% Complete																	100%	

BULKHEADING & UPLAND IMPROVEMENT [FY09]									FY 15/16	FY 16/17	FY 17/18	FY 18/19	FY 19/20	FY 20/21	FY 21/22	Total	Expenditures	Balance
Total				\$554,127	\$0	\$680,000			\$0	\$0	\$0	\$0	\$0	\$0	\$0	\$554,128	\$554,127.93	\$0.00
% Complete																	100%	

LANDSIDE PORT DEVELOPMENT [FY10]									FY 15/16	FY 16/17	FY 17/18	FY 18/19	FY 19/20	FY 20/21	FY 21/22	Total	Expenditures	Balance
Total				\$6,489	\$0	\$270,000			\$0	\$0	\$0	\$0	\$0	\$0	\$0	\$6,489	\$6,489.36	\$0.00
% Complete																	100%	

ACCESS ROAD [FY10]									FY 15/16	FY 16/17	FY 17/18	FY 18/19	FY 19/20	FY 20/21	FY 21/22	Total	Expenditures	Balance
Total				\$0	\$499,625	\$0			\$0	\$0	\$0	\$0	\$0	\$0	\$0	\$499,625	\$499,625.00	\$0.00
% Complete																	100%	

RAIL SPUR [FY10]									FY 15/16	FY 16/17	FY 17/18	FY 18/19	FY 19/20	FY 20/21	FY 21/22	Total	Expenditures	Balance
Total				\$0	\$828,482	\$0			\$0	\$0	\$0	\$0	\$0	\$0	\$0	\$828,482	\$828,481.83	\$0.00
% Complete																	100%	

GRAND TOTAL				FSTED	Work Program	Port Match			FY 15/16	FY 16/17	FY 17/18	FY 18/19	FY 19/20	FY 20/21	FY 21/22	Total	Expenditures	Balance
				\$760,616	\$3,081,607	\$1,203,500			\$1,000,000	\$0	\$3,500	\$0	\$200,000	\$0	\$0	\$3,842,224	\$3,396,024.12	\$446,200.00
																	88%	

**Disclaimer:** This document is developed and distributed for grant management purposes.

**DDR:** District Dedicated Revenue   **DIS:** Strategic Intermodal   **DPTO:** District State Public Transportation   **GMR:** Growth Management Revenue   **SIB:** State Infrastructure Bank Loan   **POED:** Seaport Investment Program   **PORB:** PORT Funds Returned from Bonds Debt Service Refund   **"I"** = Intermodal Development Grant

**PORT:** Florida Seaport Transportation & Economic Development (FSTED) Council Deep Water Ports Program   **DS:** State Primary Highways & PTO   **Red Font:** Not JPA'd or PTGA'd   **Purple Font:** Pending Admin Activities   **"U"** / **"A"** = Un / Authorized   **"C"** = Closed   **"D"** = Dropped   **"R"** = Replaced

# Port Everglades

## CARGO BERTH IMPROVEMENTS

									FY 15/16	FY 16/17	FY 17/18	FY 18/19	FY 19/20	FY 20/21	FY 21/22	Total	Expenditures	Balance
FM#	Contract	Fund	FY	FSTED	Work Program	Port Match	Expiration											
44485419401		GMR	23/24	\$0	\$7,500,000	\$2,716,462	U									\$7,500,000	\$0.00	\$7,500,000.00
44485419401		SIWR	23/24	\$0	\$3,365,849		U									\$3,365,849	\$0.00	\$3,365,849.00
Total				\$0	\$10,865,849	\$2,716,462			\$0	\$0	\$0	\$0	\$0	\$0	\$0	\$10,865,849	\$0.00	\$10,865,849.00
% Complete																	0%	

## DREDGING AND WIDENING

									FY 15/16	FY 16/17	FY 17/18	FY 18/19	FY 19/20	FY 20/21	FY 21/22	Total	Expenditures	Balance
FM#	Contract	Fund	FY	FSTED	Work Program	Port Match	Expiration											
43341419401	AR539	PORB	13/14	\$76,723	\$0	\$0	12/31/17	C								\$76,723	\$76,723.00	\$0.00
43341419401	AR539	PORT	13/14	\$500,000	\$0	\$0	12/31/17	C								\$500,000	\$500,000.00	\$0.00
43341419401	AR539	GMR	14/15	\$0	\$3,000,000	\$1,000,000	12/31/21	A								\$3,000,000	\$3,000,000.00	\$0.00
43341419402	GOL27	GMR	16/17	\$0	\$12,500,000	\$22,500,000	12/31/22	A		\$12,500,000						\$12,500,000	\$0.00	\$12,500,000.00
43341419402	GOL27	PORT	16/17	\$10,000,000	\$0		12/31/22	A		\$10,000,000						\$10,000,000	\$0.00	\$10,000,000.00
43341419402	GOL27	GMR	17/18	\$0	\$28,888,637	\$28,888,637	12/31/22	A			\$28,888,637					\$28,888,637	\$0.00	\$28,888,637.00
43341419403	G1761	DIS	18/19	\$0	\$15,000,000	\$15,000,000	03/31/24	A				\$15,000,000				\$15,000,000	\$481,648.23	\$14,518,351.77
43341419403	G1761	DIS	19/20	\$0	\$10,059,321	\$23,861,363	03/31/24	A					\$10,059,321			\$10,059,321	\$13,826.03	\$10,045,494.97
43341419403	G1761	SIWR	19/20	\$0	\$13,802,042		03/31/24	A					\$13,802,042			\$13,802,042	\$18,970.21	\$13,783,071.79
43341419403	SIWR	20/21		\$0	\$1,000,000	\$1,000,000		U						\$1,000,000		\$1,000,000	\$0.00	\$1,000,000.00
Total				\$10,576,723	\$84,250,000	\$92,250,000			\$0	\$22,500,000	\$28,888,637	\$15,000,000	\$23,861,363	\$1,000,000	\$0	\$94,826,723	\$4,091,167.47	\$90,735,555.53
% Complete										0%	0%	3%	0%	0%			4%	

## SOUTHPORT TURNING NOTCH EXPANSION

									FY 15/16	FY 16/17	FY 17/18	FY 18/19	FY 19/20	FY 20/21	FY 21/22	Total	Expenditures	Balance
FM#	Contract	Fund	FY	FSTED	Work Program	Port Match	Expiration											
43059619401	AQV62	PORT	12/13	\$1,100,000	\$0	\$4,439,307	12/31/19	C								\$1,100,000	\$1,100,000.00	\$0.00
43059619401	AQV62	DDR	12/13	\$0	\$678,447		12/31/19	C								\$678,447	\$678,447.00	\$0.00
43059619401	AQV62	DPTO	12/13	\$0	\$8,137,183		12/31/19	C								\$8,137,183	\$8,137,183.00	\$0.00
43059619401	AQV62	DS	12/13	\$0	\$3,402,291		12/31/19	C								\$3,402,291	\$3,402,291.00	\$0.00
43059619402	AR858	POED	13/14	\$0	\$34,500,000	\$11,500,000	12/12/18	C								\$34,500,000	\$34,500,000.00	\$0.00
43059619401	AQV62	DPTO	14/15	\$0	\$4,217,494	\$4,906,000	12/31/19	C								\$4,217,494	\$4,217,494.00	\$0.00
43059619401	AQV62	GMR	14/15	\$0	\$10,000,000		12/31/19	C								\$10,000,000	\$10,000,000.00	\$0.00
43059619401	AQV62	DPTO-I	14/15	\$0	\$500,506		12/31/19	C								\$500,506	\$500,506.00	\$0.00
43059619401	AQV62	PORT	15/16	\$2,500,000	\$0	\$3,666,667	12/31/19	C	\$2,500,000							\$2,500,000	\$2,500,000.00	\$0.00
43059619401	AQV62	GMR	15/16	\$0	\$8,500,000		12/31/19	C	\$8,500,000							\$8,500,000	\$8,500,000.00	\$0.00
43059619401	AQV62	DPTO	16/17	\$0	\$280,500	\$4,427,207	12/31/19	C		\$280,500						\$280,500	\$280,500.00	\$0.00
43059619401	AQV62	DDR	16/17	\$0	\$2,001,120		12/31/19	C		\$2,001,120						\$2,001,120	\$2,001,120.00	\$0.00
43059619401	AQV62	GMR	16/17	\$0	\$9,000,000		12/31/19	C		\$9,000,000						\$9,000,000	\$9,000,000.00	\$0.00
43059619401	AQV62	PORT	16/17	\$2,000,000	\$0		12/31/19	C		\$2,000,000						\$2,000,000	\$2,000,000.00	\$0.00
43059619404	G1100	POED	19/20	\$0	\$3,375,510	\$2,229,211	12/31/24	A					\$3,375,510			\$3,375,510	\$0.00	\$3,375,510.00
43059619404	G1100	PORT	19/20	\$3,600,000	\$0		12/31/24	A					\$3,600,000			\$3,600,000	\$0.00	\$3,600,000.00
43059619405	PORT	20/21		\$3,639,934	\$0	\$1,213,311		A						\$3,639,934		\$3,639,934	\$0.00	\$3,639,934.00
Total				\$12,839,934	\$84,593,051	\$32,381,703			\$11,000,000	\$13,281,620	\$0	\$0	\$6,975,510	\$3,639,934	\$0	\$97,432,985	\$86,817,541.00	\$10,615,444.00
% Complete									100%	85%			0%	0%			89%	

## SEAPORT SECURITY GRANT PROGRAM [LICENSE PLATE READER]

									FY 15/16	FY 16/17	FY 17/18	FY 18/19	FY 19/20	FY 20/21	FY 21/22	Total	Expenditures	Balance
FM#	Contract	Fund	FY	FSTED	Work Program	Port Match	Expiration											
44488419402	G1179	EM20	20/21	\$135,000	\$0	\$45,000	A							\$135,000		\$135,000	\$0.00	\$135,000.00
Total				\$135,000	\$0	\$45,000			\$0	\$0	\$0	\$0	\$0	\$135,000	\$0	\$135,000	\$0.00	\$135,000.00
% Complete														0%			0%	

## SEAPORT SECURITY GRANT PROGRAM [RADAR SYSTEM UPGRADES]

									FY 15/16	FY 16/17	FY 17/18	FY 18/19	FY 19/20	FY 20/21	FY 21/22	Total	Expenditures	Balance
FM#	Contract	Fund	FY	FSTED	Work Program	Port Match	Expiration											
44488419401	G1A02	DPTO	18/19	\$40,000	\$0	\$13,333	02/28/22	A				\$40,000				\$40,000	\$36,781.19	\$3,218.81
Total				\$40,000	\$0	\$13,333			\$0	\$0	\$0	\$40,000	\$0	\$0	\$0	\$40,000	\$36,781.19	\$3,218.81
% Complete												92%					92%	

**Disclaimer:** This document is developed and distributed for grant management purposes.

**DDR:** District Dedicated Revenue **DIS:** Strategic Intermodal **DPTO:** District State Public Transportation **GMR:** Growth Management Revenue **SIB:** State Infrastructure Bank Loan **POED:** Seaport Investment Program **PORB:** PORT Funds Returned from Bonds Debt Service Refund **"I"** = Intermodal Development Grant

**PORT:** Florida Seaport Transportation & Economic Development (FSTED) Council Deep Water Ports Program **DS:** State Primary Highways & PTO **Red Font:** Not JPA'd or PTGA'd **Purple Font:** Pending Admin Activities **"U" / "A"** = Un / Authorized **"C"** = Closed **"D"** = Dropped **"R"** = Replaced

Port Everglades *continued*

POST PANAMAX CRANE FOR ICTF									FY 15/16	FY 16/17	FY 17/18	FY 18/19	FY 19/20	FY 20/21	FY 21/22	Total	Expenditures	Balance
FM#	Contract	Fund	FY	FSTED	Work Program	Port Match	Expiration											
43330019401	G0541	DIS	17/18	\$0	\$6,000,000	\$6,000,000	12/31/22	A			\$6,000,000					\$6,000,000	\$0.00	\$6,000,000.00
43330019401	G0541	PORT	18/19	\$3,400,000	\$0	\$3,400,000	12/31/22	A				\$3,400,000				\$3,400,000	\$0.00	\$3,400,000.00
Total				\$3,400,000	\$6,000,000	\$9,400,000			\$0	\$0	\$6,000,000	\$3,400,000	\$0	\$0	\$0	\$9,400,000	\$0.00	\$9,400,000.00
% Complete											0%	0%					0%	

NEW BULKHEAD AT BERTHS 9 AND 10									FY 15/16	FY 16/17	FY 17/18	FY 18/19	FY 19/20	FY 20/21	FY 21/22	Total	Expenditures	Balance
FM#	Contract	Fund	FY	FSTED	Work Program	Port Match	Expiration											
43012319401	AR538	GMR	13/14	\$0	\$3,000,000	\$3,000,000	07/31/20	A								\$3,000,000	\$3,000,000.00	\$0.00
43012319401	AR538	PORT	17/18	\$200,000	\$0	\$200,000	07/31/20	A			\$200,000					\$200,000	\$200,000.00	\$0.00
43012319402	G0546	PORT	17/18	\$3,400,000	\$0	\$3,400,000	12/31/22	A			\$3,400,000					\$3,400,000	\$0.00	\$3,400,000.00
Total				\$3,600,000	\$3,000,000	\$6,600,000			\$0	\$0	\$3,600,000	\$0	\$0	\$0	\$0	\$6,600,000	\$3,200,000.00	\$3,400,000.00
% Complete											6%						48%	

GATE ADDITION AT MCINTOSH ROAD									FY 15/16	FY 16/17	FY 17/18	FY 18/19	FY 19/20	FY 20/21	FY 21/22	Total	Expenditures	Balance
FM#	Contract	Fund	FY	FSTED	Work Program	Port Match	Expiration											
43807019401	G0G33	TRWR	16/17	\$0	\$780,000	\$780,000	12/31/20	A			\$780,000					\$780,000	\$780,000.00	\$0.00
Total				\$0	\$780,000	\$780,000			\$0	\$780,000	\$0	\$0	\$0	\$0	\$0	\$780,000	\$780,000.00	\$0.00
% Complete											100%						100%	

GRAND TOTAL				FSTED	Work Program	Port Match		FY 15/16	FY 16/17	FY 17/18	FY 18/19	FY 19/20	FY 20/21	FY 21/22	Total	Expenditures	Balance
				\$30,591,657	\$189,488,900	\$144,186,498		\$11,000,000	\$36,561,620	\$38,488,637	\$18,440,000	\$30,836,873	\$4,774,934	\$0	\$220,080,557	\$94,925,490	\$125,155,067
																43%	

**Disclaimer:** This document is developed and distributed for grant management purposes.

**DDR:** District Dedicated Revenue   **DIS:** Strategic Intermodal   **DPTO:** District State Public Transportation   **GMR:** Growth Management Revenue   **SIB:** State Infrastructure Bank Loan   **POED:** Seaport Investment Program   **PORB:** PORT Funds Returned from Bonds Debt Service Refund   "I" = Intermodal Development Grant

**PORT:** Florida Seaport Transportation & Economic Development (FSTED) Council Deep Water Ports Program   **DS:** State Primary Highways & PTO   **Red Font:** Not JPA'd or PTGA'd   **Purple Font:** Pending Admin Activities   "U" / "A" = Un / Authorized   "C" = Closed   "D" = Dropped   "R" = Replaced

# Port of Fort Pierce

BERTH IMPROVEMENTS								FY 15/16	FY 16/17	FY 17/18	FY 18/19	FY 19/20	FY 20/21	FY 21/22	Total	Expenditures	Balance
FM#	Contract	Fund	FY	FSTED	Work Program	Port Match	Expiration										
44674319401		PORT	20/21	\$500,000	\$0	\$166,667	A						\$500,000		\$500,000	\$0.00	\$500,000.00
Total				\$500,000	\$0	\$166,667			\$0	\$0	\$0	\$0	\$500,000	\$0	\$500,000	\$0.00	\$500,000.00
% Complete													100%			0%	

MASTER PLAN UPDATE								FY 15/16	FY 16/17	FY 17/18	FY 18/19	FY 19/20	FY 20/21	FY 21/22	Total	Expenditures	Balance
FM#	Contract	Fund	FY	FSTED	Work Program	Port Match	Expiration										
44445619401	G1G05	PORT	19/20	\$100,000	\$0	\$100,000	12/31/24	A				\$100,000			\$100,000	\$0.00	\$100,000.00
Total				\$100,000	\$0	\$100,000			\$0	\$0	\$0	\$100,000	\$0	\$0	\$100,000	\$0.00	\$100,000.00
% Complete												0%				0%	

REHABILITATION OF SOUTH DOCK [WAREHOUSE DEMO, SITE PREP, NEW CONCRETE]								FY 15/16	FY 16/17	FY 17/18	FY 18/19	FY 19/20	FY 20/21	FY 21/22	Total	Expenditures	Balance
FM#	Contract	Fund	FY	FSTED	Work Program	Port Match	Expiration										
44445719402	G1804	PORT	18/19	\$298,073	\$0	\$298,073	07/31/24	A			\$298,073				\$298,073	\$129,991.05	\$168,081.95
44445719402		PORT	20/21	\$313,177	\$0	\$313,177		U					\$313,177		\$313,177	\$0.00	\$313,177.00
Total				\$611,250	\$0	\$611,250			\$0	\$0	\$298,073	\$0	\$313,177	\$0	\$611,250	\$129,991.05	\$481,258.95
% Complete											44%		100%			21%	

FISHERMAN'S WHARF BULKHEAD								FY 15/16	FY 16/17	FY 17/18	FY 18/19	FY 19/20	FY 20/21	FY 21/22	Total	Expenditures	Balance
FM#	Contract	Fund	FY	FSTED	Work Program	Port Match	Expiration										
44070319401	G0035	PORT	17/18	\$225,000	\$0	\$85,000	12/31/19	A			\$225,000				\$225,000	\$224,200.97	\$799.03
44070319402	G0T04	PORT	18/19	\$255,000	\$0	\$85,000	12/31/22	A			\$255,000				\$255,000	\$0.00	\$255,000.00
44070319402	G0T04	PORT	18/19	\$201,927	\$0	\$67,309	12/31/22	A			\$201,927				\$201,927	\$0.00	\$201,927.00
Total				\$681,927	\$0	\$237,309			\$0	\$0	\$480,000	\$201,927	\$0	\$0	\$681,927	\$224,200.97	\$457,726.03
% Complete											47%	0%				33%	

SEAGRASS STUDY AND CONCEPTUAL DEVELOPMENT PLAN								FY 15/16	FY 16/17	FY 17/18	FY 18/19	FY 19/20	FY 20/21	FY 21/22	Total	Expenditures	Balance
FM#	Contract	Fund	FY	FSTED	Work Program	Port Match	Expiration										
44070419401	G0034	PORT	17/18	\$125,000	\$0	\$125,000	08/01/22	A			\$125,000				\$125,000	\$41,394.00	\$83,606.00
Total				\$125,000	\$0	\$125,000			\$0	\$0	\$125,000	\$0	\$0	\$0	\$125,000	\$41,394.00	\$83,606.00
% Complete											33%					33%	

FISHERMAN'S WHARF ROAD DEVELOPMENT								FY 15/16	FY 16/17	FY 17/18	FY 18/19	FY 19/20	FY 20/21	FY 21/22	Total	Expenditures	Balance
FM#	Contract	Fund	FY	FSTED	Work Program	Port Match	Expiration										
43658319401	G0678	PORT	15/16	\$125,000	\$0	\$125,000	09/30/20	A	\$125,000						\$125,000	\$95,027.50	\$29,972.50
Total				\$125,000	\$0	\$125,000			\$125,000	\$0	\$0	\$0	\$0	\$0	\$125,000	\$95,027.50	\$29,972.50
% Complete									76%							76%	

NEW NORTH ENTRANCE [FY98-13]								FY 15/16	FY 16/17	FY 17/18	FY 18/19	FY 19/20	FY 20/21	FY 21/22	Total	Expenditures	Balance
Total								\$0	\$4,606,124	\$103,370					\$4,606,124	\$4,606,124.43	\$0.00
% Complete																100%	

GRAND TOTAL				FSTED	Work Program	Port Match		FY 15/16	FY 16/17	FY 17/18	FY 18/19	FY 19/20	FY 20/21	FY 21/22	Total	Expenditures	Balance
				\$2,143,177	\$4,606,124	\$1,468,596		\$125,000	\$0	\$605,000	\$500,000	\$100,000	\$813,177	\$0	\$6,749,301	\$5,096,737.95	\$1,652,563.48
																76%	

**Disclaimer:** This document is developed and distributed for grant management purposes.

**DDR:** District Dedicated Revenue **DIS:** Strategic Intermodal **DPTO:** District State Public Transportation **GMR:** Growth Management Revenue **SIB:** State Infrastructure Bank Loan **POED:** Seaport Investment Program **PORB:** PORT Funds Returned from Bonds Debt Service Refund "I" = Intermodal Development Grant

**PORT:** Florida Seaport Transportation & Economic Development (FSTED) Council Deep Water Ports Program **DS:** State Primary Highways & PTO **Red Font:** Not JPA'd or PTGA'd **Purple Font:** Pending Admin Activities **"U" / "A"** = Un / Authorized **"C"** = Closed **"D"** = Dropped **"R"** = Replaced

Port of Palm Beach

BERTH 1 EXPANSION									FY 15/16	FY 16/17	FY 17/18	FY 18/19	FY 19/20	FY 20/21	FY 21/22	Total	Expenditures	Balance
FM#	Contract	Fund	FY	FSTED	Work Program	Port Match	Expiration											
43483319402	G1190	PORT	19/20	\$937,500	\$0	\$312,500	10/31/24	A					\$937,500			\$937,500	\$0.00	\$937,500.00
Total				\$937,500	\$0	\$312,500			\$0	\$0	\$0	\$0	\$937,500	\$0	\$0	\$937,500	\$0.00	\$937,500.00
% Complete													0%				0%	

SEAPORT SECURITY GRANT PROGRAM [COMMAND CONTROL SYSTEM]									FY 15/16	FY 16/17	FY 17/18	FY 18/19	FY 19/20	FY 20/21	FY 21/22	Total	Expenditures	Balance
FM#	Contract	Fund	FY	FSTED	Work Program	Port Match	Expiration											
44488519402	G1J80	EM20	19/20	\$105,000	\$0	\$35,000	A						\$105,000			\$105,000	\$0.00	\$105,000.00
Total				\$105,000	\$0	\$35,000			\$0	\$0	\$0	\$0	\$105,000	\$0	\$0	\$105,000	\$0.00	\$105,000.00
% Complete													0%				0%	

AREA D MITIGATION									FY 15/16	FY 16/17	FY 17/18	FY 18/19	FY 19/20	FY 20/21	FY 21/22	Total	Expenditures	Balance
FM#	Contract	Fund	FY	FSTED	Work Program	Port Match	Expiration											
44445819401		PORT	20/21	\$187,500	\$0	\$187,500	U							\$187,500		\$187,500	\$0.00	\$187,500.00
Total				\$187,500	\$0	\$187,500			\$0	\$0	\$0	\$0	\$0	\$187,500	\$0	\$187,500	\$0.00	\$187,500.00
% Complete														0%			0%	

UPLAND CARGO IMPROVEMENTS [RAIL UPGRADES & YARD]									FY 15/16	FY 16/17	FY 17/18	FY 18/19	FY 19/20	FY 20/21	FY 21/22	Total	Expenditures	Balance
FM#	Contract	Fund	FY	FSTED	Work Program	Port Match	Expiration											
44070519403	G1L41	DIS	19/20	\$0	\$1,003,072	\$3,069,481	12/31/24	A					\$1,003,072			\$1,003,072	\$0.00	\$1,003,072.00
44070519403	G1L41	DIS	19/20	\$0	\$2,066,409	\$0	12/31/24	A					\$2,066,409			2,066,409	\$0.00	\$2,066,409.00
44070519404	G1L41	DIS	19/20	\$0	\$1,130,166	\$1,130,166	12/31/24	A					\$1,130,166			1,130,166	\$0.00	\$1,130,166.00
Total				\$0	\$4,199,647	\$4,199,647			\$0	\$0	\$0	\$0	\$4,199,647	\$0	\$0	\$4,199,647	\$0.00	\$4,199,647.00
% Complete													0%				0%	

UPLAND CARGO IMPROVEMENTS [ANNEX PROPERTY LANDSCAPE, WATER, FIRE HYDRANTS, LIGHTING]									FY 15/16	FY 16/17	FY 17/18	FY 18/19	FY 19/20	FY 20/21	FY 21/22	Total	Expenditures	Balance
FM#	Contract	Fund	FY	FSTED	Work Program	Port Match	Expiration											
44070519402	G1H34	PORT	19/20	\$750,000	\$0	\$750,000	10/31/24	A					\$750,000			\$750,000	\$0.00	\$750,000.00
Total				\$750,000	\$0	\$750,000			\$0	\$0	\$0	\$0	\$750,000	\$0	\$0	\$750,000	\$0.00	\$750,000.00
% Complete													0%				0%	

SEAPORT SECURITY GRANT PROGRAM [PERIMETER SECURITY DETECTION SYSTEM]									FY 15/16	FY 16/17	FY 17/18	FY 18/19	FY 19/20	FY 20/21	FY 21/22	Total	Expenditures	Balance
FM#	Contract	Fund	FY	FSTED	Work Program	Port Match	Expiration											
44488519401	G1564	DPTO	18/19	\$51,263	\$0	\$17,087	02/28/22	A				\$51,263				\$51,263	\$0.00	\$51,263.00
Total				\$51,263	\$0	\$17,087			\$0	\$0	\$0	\$51,263	\$0	\$0	\$0	\$51,263	\$0.00	\$51,263.00
% Complete												0%					0%	

BERTH 1 EXPANSION									FY 15/16	FY 16/17	FY 17/18	FY 18/19	FY 19/20	FY 20/21	FY 21/22	Total	Expenditures	Balance
FM#	Contract	Fund	FY	FSTED	Work Program	Port Match	Expiration											
43483319401	ARS49	DPTO-I	14/15	\$0	\$75,000	\$75,000	06/30/20	C								\$75,000	\$75,000.00	\$0.00
43483319401	ARS49	PORT	15/16	\$309,500	\$0	\$309,500	06/30/20	C	\$309,500							\$309,500	\$309,500.00	\$0.00
43483319401	ARS49	DIS	18/19	\$0	\$3,000,000	\$3,000,000	06/30/20	A				\$3,000,000				\$3,000,000	\$3,000,000.00	\$0.00
43483319401	ARS49	DDR	18/19	\$0	\$214,790		06/30/20	C				\$214,790				\$214,790	\$214,790.00	\$0.00
Total				\$309,500	\$3,289,790	\$3,384,500			\$309,500	\$0	\$0	\$3,214,790	\$0	\$0	\$0	\$3,599,290	\$3,599,290.00	\$0.00
% Complete									100%			93%					100%	

PASSENGER LOADING BRIDGE									FY 15/16	FY 16/17	FY 17/18	FY 18/19	FY 19/20	FY 20/21	FY 21/22	Total	Expenditures	Balance
FM#	Contract	Fund	FY	FSTED	Work Program	Port Match	Expiration											
44220019401	G1560	PORT	18/19	\$1,250,000	\$0	\$1,250,000	01/31/22	A				\$1,250,000				\$1,250,000	\$26,013.75	\$1,223,986.25
Total				\$1,250,000	\$0	\$1,250,000			\$0	\$0	\$0	\$1,250,000	\$0	\$0	\$0	\$1,250,000	\$26,013.75	\$1,223,986.25
% Complete												2%					2%	

Disclaimer: This document is developed and distributed for grant management purposes.

DDR: District Dedicated Revenue    DIS: Strategic Intermodal    DPTO: District State Public Transportation    GMR: Growth Management Revenue    SIB: State Infrastructure Bank Loan    POED: Seaport Investment Program    PORB: PORT Funds Returned from Bonds Debt Service Refund    "I" = Intermodal Development Grant

PORT: Florida Seaport Transportation & Economic Development (FSTED) Council Deep Water Ports Program    DS: State Primary Highways & PTO    Red Font: Not JPA'd or PTGA'd    Purple Font: Pending Admin Activities    "U" / "A" = Un / Authorized    "C" = Closed    "D" = Dropped    "R" = Replaced

# Port of Palm Beach *continued*

PORT RAIL FACILITY EXPANSION PROJECT								FY 15/16	FY 16/17	FY 17/18	FY 18/19	FY 19/20	FY 20/21	FY 21/22	Total	Expenditures	Balance			
Total								\$420,287	\$247,691	\$526,974	\$197,226	\$0	\$0	\$183,252	\$0	\$0	\$0	\$667,978	\$667,977.75	\$0.00
% Complete											100%			100%				100%		

UPLAND CARGO IMPROVEMENTS [REFRIGERATED TERMINAL REDEVELOPMENT]								FY 15/16	FY 16/17	FY 17/18	FY 18/19	FY 19/20	FY 20/21	FY 21/22	Total	Expenditures	Balance		
FM#	Contract	Fund	FY	FSTED	Work Program	Port Match	Expiration												
44070519401	G0078	PORT	17/18	\$2,000,000	\$0	\$2,000,000	06/30/20	A		\$2,000,000					\$2,000,000	\$1,973,060.74	\$26,939.26		
Total								\$2,000,000	\$0	\$2,000,000	\$0	\$0	\$0	\$0	\$2,000,000	\$1,973,060.74	\$26,939.26		
% Complete											99%						99%		

CONTAINER YARD EXPANSION [DESIGN/PERMIT DEMO BUILDING/CARGO LAYDOWN]								FY 15/16	FY 16/17	FY 17/18	FY 18/19	FY 19/20	FY 20/21	FY 21/22	Total	Expenditures	Balance		
FM#	Contract	Fund	FY	FSTED	Work Program	Port Match	Expiration												
43997419401	G0E90	DDR-I	16/17	\$0	\$170,000	\$0	07/30/20	C		\$170,000					\$170,000	\$170,000.00	\$0.00		
Total								\$0	\$170,000	\$0	\$0	\$0	\$0	\$0	\$170,000	\$170,000.00	\$0.00		
% Complete											100%					100%			

MASTER PLAN UPDATE								FY 15/16	FY 16/17	FY 17/18	FY 18/19	FY 19/20	FY 20/21	FY 21/22	Total	Expenditures	Balance		
Total								\$0	\$153,152	\$153,152	\$51,469	\$0	\$0	\$0	\$0	\$153,152	\$153,152.18	\$0.00	
% Complete											100%					100%			

PORT-WIDE SLIP REDEVELOPMENT [SLIP 3 & BERTH 17 ENHANCEMENT]								FY 15/16	FY 16/17	FY 17/18	FY 18/19	FY 19/20	FY 20/21	FY 21/22	Total	Expenditures	Balance		
FM#	Contract	Fund	FY	FSTED	Work Program	Port Match	Expiration												
42282719401	AQ829	GENREV	10/11	\$0	\$1,236,000	\$412,000	12/31/15	C							\$1,236,000	\$1,236,000.00	\$0.00		
42282719401	AQ829	PORT	11/12	\$483,226	\$0	\$1,186,489	12/31/15	C							\$483,226	\$483,226.72	\$0.00		
42282719401	AQ829	DPTO-I	11/12	\$0	\$287,277		12/31/15	C							\$287,277	\$287,277.00	\$0.00		
42282719401	AQ829	DIS	11/12	\$0	\$976,773		12/31/15	C							\$976,773	\$976,773.28	\$0.00		
42282719401	AQ829	DPTO	11/12	\$0	\$2,099,467		12/31/15	C							\$2,099,467	\$2,099,467.00	\$0.00		
42282719401	AQ829	PORB	12/13	\$500,000	\$0		12/31/15	C							\$500,000	\$499,999.97	\$0.00		
42282719401	AQ829	PORT	12/13	\$1,794,701	\$0		12/31/15	C							\$1,794,701	\$1,794,700.35	\$0.00		
42282719401	AQ829	DPTO-I	12/13	\$0	\$10,914		12/31/15	C							\$10,914	\$10,914.00	\$0.00		
42282719401	AQ829	DS-I	12/13	\$0	\$69,734		12/31/15	C							\$69,734	\$69,734.00	\$0.00		
42282719401	AQ829	DPTO	12/13	\$0	\$3,740,092		12/31/15	C							\$3,740,092	\$3,740,092.68	\$0.00		
42282719401	AQ829	GMR	13/14	\$0	\$377,367		12/31/15	C							\$377,367	\$377,368.45	\$0.00		
42282719401	AQ829	DPTO	13/14	\$0	\$4,214,626		12/31/15	C							\$4,214,626	\$4,214,625.68	\$0.00		
42282719402	AR857	POED	13/14	\$0	\$4,601,000	\$1,533,667	12/04/17	C							\$4,601,000	\$4,601,000.00	\$0.00		
42282719401	AQ829	GMR	14/15	\$0	\$1,537,153	\$512,384	12/31/15	C							\$1,176,212	\$1,176,212.01	\$0.00		
42282719401	AQ829	DDR	14/15	\$0	\$76,852		12/31/15	R							\$0	\$0.00	\$0.00		
42282719401	AQ829	DPTO	14/15	\$0	\$2,187,500		12/31/15	C							\$1,780,062	\$1,780,062.40	\$0.00		
42282719401	AQ829	DPTO-I	14/15	\$0	\$1,300,000		12/31/15	C							\$1,300,000	\$1,300,000.00	\$0.00		
42282719403	G0995	DPTO	15/16	\$0	\$750,000	\$750,000	12/31/20	A	\$750,000						\$750,000	\$502,257.38	\$247,742.62		
42282719403	G0995	PORT	16/17	\$750,000	\$0	\$750,000	12/31/20	A		\$750,000					\$750,000	\$2,464.23	\$747,535.77		
Total								\$3,527,927	\$23,464,755	\$5,144,540	\$750,000	\$750,000	\$0	\$0	\$0	\$26,147,451	\$25,152,175.15	\$995,278.39	
% Complete											67%	0%					96%		

TROPICAL SHIPPING REEFER LINE [CONTAINER YARD]								FY 15/16	FY 16/17	FY 17/18	FY 18/19	FY 19/20	FY 20/21	FY 21/22	Total	Expenditures	Balance		
FM#	Contract	Fund	FY	FSTED	Work Program	Port Match	Expiration												
43503319401	ARJ70	PORT	14/15	\$275,000	\$0	\$275,000	12/31/20	A							\$275,000	\$107,864.33	\$167,135.67		
Total								\$275,000	\$0	\$275,000	\$0	\$0	\$0	\$0	\$275,000	\$107,864.33	\$167,135.67		
% Complete																39%			

GRAND TOTAL				FSTED	Work Program	Port Match		FY 15/16	FY 16/17	FY 17/18	FY 18/19	FY 19/20	FY 20/21	FY 21/22	Total	Expenditures	Balance
				\$9,813,977	\$31,525,035	\$18,235,900		\$1,308,195	\$920,000	\$2,000,000	\$4,699,305	\$5,992,147	\$187,500	\$0	\$40,493,781	\$31,849,533.90	\$8,644,249.57
																79%	

**Disclaimer:** This document is developed and distributed for grant management purposes.

**DDR:** District Dedicated Revenue **DIS:** Strategic Intermodal **DPTO:** District State Public Transportation **GMR:** Growth Management Revenue **SIB:** State Infrastructure Bank Loan **POED:** Seaport Investment Program **PORB:** PORT Funds Returned from Bonds Debt Service Refund **"I"** = Intermodal Development Grant

**PORT:** Florida Seaport Transportation & Economic Development (FSTED) Council Deep Water Ports Program **DS:** State Primary Highways & PTO **Red Font:** Not JPA'd or PTGA'd **Purple Font:** Pending Admin Activities **"U"** / **"A"** = Un / Authorized **"C"** = Closed **"D"** = Dropped **"R"** = Replaced

# Port Canaveral

## NORTH CARGO BERTH IMPROVEMENTS [BERTH 3 & 4]

										FY 15/16	FY 16/17	FY 17/18	FY 18/19	FY 19/20	FY 20/21	FY 21/22	Total	Expenditures	Balance
FM#	Contract	Fund	FY	FSTED	Work Program	Port Match	Expiration												
44032319403	G1C70	GMR	19/20	\$0	\$2,500,000	\$833,333	06/01/22	A						\$2,500,000			\$2,500,000	\$0.00	\$2,500,000.00
44032319404		PORT	20/21	\$3,600,000	\$0	\$1,200,000		U							\$3,600,000		\$3,600,000	\$0.00	\$3,600,000.00
4403232A804		SIWR	22/23	\$0	\$8,000,000	\$2,666,667		U									\$8,000,000	\$0.00	\$8,000,000.00
Total				\$3,600,000	\$10,500,000	\$4,700,000			\$0	\$0	\$0	\$0	\$2,500,000	\$3,600,000	\$0	\$0	\$14,100,000	\$0.00	\$14,100,000.00
% Complete														0%	0%			0%	

## SEAPORT SECURITY GRANT PROGRAM [CT BOLLARDS]

										FY 15/16	FY 16/17	FY 17/18	FY 18/19	FY 19/20	FY 20/21	FY 21/22	Total	Expenditures	Balance
FM#	Contract	Fund	FY	FSTED	Work Program	Port Match	Expiration												
41265229402	G1I76	EM20	19/20	\$342,900	\$0	\$114,300	06/01/24	A						\$342,900			\$342,900	\$0.00	\$342,900.00
Total				\$342,900	\$0	\$114,300			\$0	\$0	\$0	\$0	\$342,900	\$0	\$0	\$0	\$342,900	\$0.00	\$342,900.00
% Complete														0%				0%	

## CRUISE TERMINAL [SOUTH SIDE - CT3]

										FY 15/16	FY 16/17	FY 17/18	FY 18/19	FY 19/20	FY 20/21	FY 21/22	Total	Expenditures	Balance
FM#	Contract	Fund	FY	FSTED	Work Program	Port Match	Expiration												
44444819401	G1620	PORT	18/19	\$2,534,091	\$0	\$2,534,091	06/01/21	A					\$2,534,091				\$2,534,091	\$2,416,760.74	\$117,330.26
44444819401	G1620	PORT	19/20	\$500,000	\$0	\$500,000	06/01/21	A						\$500,000			\$500,000	\$0.00	\$500,000.00
Total				\$3,034,091	\$0	\$3,034,091			\$0	\$0	\$0	\$0	\$2,534,091	\$500,000	\$0	\$0	\$3,034,091	\$2,416,760.74	\$617,330.26
% Complete													95%	0%				80%	

## CRUISE TERMINAL IMPROVEMENTS [CT3 HVAC / ETC]

										FY 15/16	FY 16/17	FY 17/18	FY 18/19	FY 19/20	FY 20/21	FY 21/22	Total	Expenditures	Balance
FM#	Contract	Fund	FY	FSTED	Work Program	Port Match	Expiration												
44444829401	G1C07	PORT	19/20	\$3,000,000	\$0	\$3,000,000	06/01/21	A						\$3,000,000			\$3,000,000	\$897,847.59	\$2,102,152.41
Total				\$3,000,000	\$0	\$3,000,000			\$0	\$0	\$0	\$0	\$3,000,000	\$0	\$0	\$0	\$3,000,000	\$897,847.59	\$2,102,152.41
% Complete														30%				30%	

## NORTH CARGO BERTH IMPROVEMENTS [BERTH 8 UPLANDS & PIER EXTENSION]

										FY 15/16	FY 16/17	FY 17/18	FY 18/19	FY 19/20	FY 20/21	FY 21/22	Total	Expenditures	Balance
FM#	Contract	Fund	FY	FSTED	Work Program	Port Match	Expiration												
44032319402	G1B85	GMR	19/20	\$0	\$7,500,000	\$7,500,000	06/01/22	A						\$7,500,000			\$7,500,000	\$3,748,499.59	\$3,751,500.41
Total				\$0	\$7,500,000	\$7,500,000			\$0	\$0	\$0	\$0	\$7,500,000	\$0	\$0	\$0	\$7,500,000	\$3,748,499.59	\$3,751,500.41
% Complete														50%				50%	

## SEAPORT SECURITY GRANT PROGRAM [LICENSE PLATE READER SYSTEM]

										FY 15/16	FY 16/17	FY 17/18	FY 18/19	FY 19/20	FY 20/21	FY 21/22	Total	Expenditures	Balance
FM#	Contract	Fund	FY	FSTED	Work Program	Port Match	Expiration												
Total				\$149,123	\$0	\$49,707			\$0	\$0	\$0	\$0	\$149,123	\$0	\$0	\$0	\$149,123	\$149,123.00	\$0.00
% Complete													100%					100%	

## SOUTH ROADS [GEORGE KING BLVD.]

										FY 15/16	FY 16/17	FY 17/18	FY 18/19	FY 19/20	FY 20/21	FY 21/22	Total	Expenditures	Balance
FM#	Contract	Fund	FY	FSTED	Work Program	Port Match	Expiration												
44208119401	G1562	DIS	18/19	\$0	\$200,000	\$200,000	06/01/20	A					\$200,000				\$200,000	\$133,998.74	\$66,001.26
Total				\$0	\$200,000	\$200,000			\$0	\$0	\$0	\$0	\$200,000	\$0	\$0	\$0	\$200,000	\$133,998.74	\$66,001.26
% Complete													67%					67%	

## GRAND TOTAL

				FSTED	Work Program	Port Match				FY 15/16	FY 16/17	FY 17/18	FY 18/19	FY 19/20	FY 20/21	FY 21/22	Total	Expenditures	Balance
				\$10,126,114	\$18,200,000	\$18,598,098			\$0	\$0	\$0	\$0	\$2,883,214	\$13,842,900	\$3,600,000	\$0	\$28,326,114	\$7,346,230	\$20,979,884

**Disclaimer:** This document is developed and distributed for grant management purposes.

**DDR:** District Dedicated Revenue **DIS:** Strategic Intermodal **DPTO:** District State Public Transportation **GMR:** Growth Management Revenue **SIB:** State Infrastructure Bank Loan **POED:** Seaport Investment Program **PORB:** PORT Funds Returned from Bonds Debt Service Refund **"I"** = Intermodal Development Grant

**PORT:** Florida Seaport Transportation & Economic Development (FSTED) Council Deep Water Ports Program **DS:** State Primary Highways & PTO **Red Font:** Not JPA'd or PTGA'd **Purple Font:** Pending Admin Activities **"U" / "A"** = Un / Authorized **"C"** = Closed **"D"** = Dropped **"R"** = Replaced



## Port Miami

## PASSENGER BOARDING BRIDGES

									FY 15/16	FY 16/17	FY 17/18	FY 18/19	FY 19/20	FY 20/21	FY 21/22	Total	Expenditures	Balance
FM#	Contract	Fund	FY	FSTED	Work Program	Port Match	Expiration											
43802919401		DPTO	20/21	\$0	\$2,300,000	\$2,300,000	U							\$2,300,000		\$2,300,000	\$0.00	\$2,300,000.00
Total				\$0	\$2,300,000	\$2,300,000			\$0	\$0	\$0	\$0	\$0	\$2,300,000	\$0	\$2,300,000	\$0.00	\$2,300,000.00
% Complete														0%			0%	

## CRUISE TERMINAL IMPROVEMENTS

									FY 15/16	FY 16/17	FY 17/18	FY 18/19	FY 19/20	FY 20/21	FY 21/22	Total	Expenditures	Balance
FM#	Contract	Fund	FY	FSTED	Work Program	Port Match	Expiration											
43336319401	AR795	POED	13/14	\$0	\$4,000,000	\$4,000,000	12/31/18	C								\$4,000,000	\$4,000,000.00	\$0.00
43336319402	G0I76	PORT	16/17	\$2,750,000	\$0	\$2,750,000	12/31/21	C		\$2,750,000						\$2,750,000	\$2,750,000.00	\$0.00
43336319401	AR795	POED	17/18	\$0	\$134,119	\$134,119	12/31/18	C			\$134,119					\$134,119	\$134,118.77	\$0.00
43336319402	G0I76	PORT	18/19	\$3,800,000	\$0	\$3,800,000	12/31/21	A				\$3,800,000				\$3,800,000	\$2,161,371.03	\$1,638,628.97
43336319403	G0I76	DPTO-I	18/19	\$0	\$76,555	\$76,555	12/31/21	A				\$76,555				\$76,555	\$76,555.00	\$0.00
43336319404	G1E74	PORT	19/20	\$3,900,000	\$0	\$3,900,000	12/31/21	A					\$3,900,000			\$3,900,000	\$0.00	\$3,900,000.00
43336319405	PORT	20/21		\$4,250,000	\$0	\$4,250,000		U						\$4,250,000		\$4,250,000	\$0.00	\$4,250,000.00
Total				\$14,700,000	\$4,210,674	\$18,910,674			\$0	\$2,750,000	\$134,119	\$3,876,555	\$3,900,000	\$4,250,000	\$0	\$18,910,674.00	\$9,122,044.80	\$9,788,628.97
% Complete										100%	100%	58%	0%	0%			48%	

## SEAPORT SECURITY GRANT PROGRAM [CRANE AREA CAMERAS]

									FY 15/16	FY 16/17	FY 17/18	FY 18/19	FY 19/20	FY 20/21	FY 21/22	Total	Expenditures	Balance
FM#	Contract	Fund	FY	FSTED	Work Program	Port Match	Expiration											
44489819402	G1J23	EM20	19/20	\$172,500	\$0	\$57,500	06/30/25	A					172,500			\$172,500	\$0.00	\$172,500.00
Total				\$172,500	\$0	\$57,500			\$0	\$0	\$0	\$0	\$172,500	\$0	\$0	\$172,500	\$0.00	\$172,500.00
% Complete													0%				0%	

## SEAPORT SECURITY GRANT PROGRAM [CAMERAS]

									FY 15/16	FY 16/17	FY 17/18	FY 18/19	FY 19/20	FY 20/21	FY 21/22	Total	Expenditures	Balance
FM#	Contract	Fund	FY	FSTED	Work Program	Port Match	Expiration											
44489819401	G1447	DPTO	18/19	\$108,075	\$0	\$36,025	12/31/21	A				\$108,075				\$108,075	\$87,095.25	\$20,979.75
Total				\$108,075	\$0	\$36,025			\$0	\$0	\$0	\$108,075	\$0	\$0	\$0	\$108,075	\$87,095.25	\$20,979.75
% Complete												81%					81%	

## POST PANAMAX CRANES

									FY 15/16	FY 16/17	FY 17/18	FY 18/19	FY 19/20	FY 20/21	FY 21/22	Total	Expenditures	Balance
FM#	Contract	Fund	FY	FSTED	Work Program	Port Match	Expiration											
43112619401	AQH82	PORB	11/12	\$2,880,000	\$0	\$2,880,000	06/30/20	C								\$2,880,000	\$2,880,000.00	\$0.00
43112619401	AQH82	PORT	12/13	\$1,055,000	\$0	\$1,055,000	06/30/20	C								\$1,055,000	\$1,055,000.00	\$0.00
43112619401	AQH82	GMR	13/14	\$0	\$5,000,000	\$5,000,000	06/30/22	A								\$5,000,000	\$4,034,165.29	\$965,834.71
43112619402	AQH82	PORT	15/16	\$1,000,000	\$0	\$1,000,000	06/30/22	A	\$1,000,000							\$1,000,000	\$0.00	\$1,000,000.00
43112619402	AQH82	DPTO-I	16/17	\$0	\$1,374,189	\$1,374,189	06/30/22	A		\$1,374,189						\$1,374,189	\$0.00	\$1,374,189.00
43112619402	AQH82	DIS	17/18	\$0	\$6,000,000	\$6,000,000	06/30/22	A			\$6,000,000					\$6,000,000	\$0.00	\$6,000,000.00
43112619402	AQH82	GMR	18/19	\$0	\$10,000,000	\$10,000,000	06/30/22	A				\$10,000,000				\$10,000,000	\$0.00	\$10,000,000.00
Total				\$4,935,000	\$22,374,189	\$27,309,189			\$1,000,000	\$1,374,189	\$6,000,000	\$10,000,000	\$0	\$0	\$0	\$27,309,189	\$7,969,165.29	\$19,340,023.71
% Complete									0%	0%	0%	0%					29%	

## UPLAND CARGO IMPROVEMENTS [YARD DENSIFICATION &amp; AUTOMATED TRUCK GATES]

									FY 15/16	FY 16/17	FY 17/18	FY 18/19	FY 19/20	FY 20/21	FY 21/22	Total	Expenditures	Balance
FM#	Contract	Fund	FY	FSTED	Work Program	Port Match	Expiration											
44061619401	G0R66	GMR	17/18	\$0	\$8,800,000	\$13,450,000	06/30/22	A			\$8,800,000					\$8,800,000	\$6,848,648.44	\$1,951,351.56
44061619401	G0R66	PORT	17/18	\$4,650,000	\$0	\$4,650,000	06/30/22	A			\$4,650,000					\$4,650,000	\$3,618,888.10	\$1,031,111.90
Total				\$4,650,000	\$8,800,000	\$13,450,000			\$0	\$0	\$13,450,000	\$0	\$0	\$0	\$0	\$13,450,000	\$10,467,536.54	\$2,982,463.46
% Complete											78%						78%	

**Disclaimer:** This document is developed and distributed for grant management purposes.

**DDR:** District Dedicated Revenue **DIS:** Strategic Intermodal **DPTO:** District State Public Transportation **GMR:** Growth Management Revenue **SIB:** State Infrastructure Bank Loan **POED:** Seaport Investment Program **PORB:** PORT Funds Returned from Bonds Debt Service Refund "I" = Intermodal Development Grant

**PORT:** Florida Seaport Transportation & Economic Development (FSTED) Council Deep Water Ports Program **DS:** State Primary Highways & PTO **Red Font:** Not JPA'd or PTGA'd **Purple Font:** Pending Admin Activities **"U" / "A"** = Un / Authorized **"C"** = Closed **"D"** = Dropped **"R"** = Replaced

Port Miami *continued*

INLAND CARGO AND CONTAINER DISTRIBUTION CENTER										FY 15/16	FY 16/17	FY 17/18	FY 18/19	FY 19/20	FY 20/21	FY 21/22	Total	Expenditures	Balance
FM#	Contract	Fund	FY	FSTED	Work Program	Port Match	Expiration												
44061719401	G0R64	GMR	17/18		\$0	\$200,000	\$200,000	06/30/22	A			\$200,000					\$200,000	\$0.00	\$200,000.00
44061729401		ACFP	20/21		\$0	\$0	\$0		D						\$0		\$0	\$0.00	\$0.00
Total					\$0	\$200,000	\$200,000			\$0	\$0	\$200,000	\$0	\$0	\$0	\$0	\$200,000	\$0.00	\$200,000.00
% Complete												0%						0%	

GRAND TOTAL				FSTED	Work Program	Port Match		FY 15/16	FY 16/17	FY 17/18	FY 18/19	FY 19/20	FY 20/21	FY 21/22	Total	Expenditures	Balance
				\$24,565,575	\$37,884,863	\$62,263,388		\$1,000,000	\$4,124,189	\$19,784,119	\$13,984,630	\$4,072,500	\$6,550,000	\$0	\$62,450,438	\$27,645,842	\$34,804,596
																44%	

**Disclaimer:** This document is developed and distributed for grant management purposes.

**DDR:** District Dedicated Revenue   **DIS:** Strategic Intermodal   **DPTO:** District State Public Transportation   **GMR:** Growth Management Revenue   **SIB:** State Infrastructure Bank Loan   **POED:** Seaport Investment Program   **PORB:** PORT Funds Returned from Bonds Debt Service Refund   "I" = Intermodal Development Grant

**PORT:** Florida Seaport Transportation & Economic Development (FSTED) Council Deep Water Ports Program   **DS:** State Primary Highways & PTO   **Red Font:** Not JPA'd or PTGA'd   **Purple Font:** Pending Admin Activities   "U" / "A" = Un / Authorized   "C" = Closed   "D" = Dropped   "R" = Replaced

## Port of Key West

### MALLORY T-PIER EXTENSION & MONOPOLE INSTALLATION

										FY 15/16	FY 16/17	FY 17/18	FY 18/19	FY 19/20	FY 20/21	FY 21/22	Total	Expenditures	Balance
FM#	Contract	Fund	FY	FSTED	Work Program	Port Match	Expiration												
44444719401	G1767	POED	18/19	\$0	\$425,000	\$141,667	06/30/21	A					\$425,000				\$425,000	\$118,370.72	\$306,629.28
44444719401	G1767	PORT	19/20	\$989,832	\$0	\$896,611	06/30/21	A						\$989,832			\$989,832	\$0.00	\$989,832.00
44444719402		PORT	20/21	\$426,835	\$0	\$142,278		U							\$426,835		\$426,835	\$0.00	\$426,835.00
44412829421		POED	20/21	\$0	\$95,000	\$31,667		U							\$95,000		\$95,000	\$0.00	\$95,000.00
Total				\$1,416,667	\$520,000	\$1,212,223				\$0	\$0	\$0	\$425,000	\$989,832	\$521,835	\$0	\$1,936,667	\$118,371	\$1,818,296.28
% Complete													28%	0%	0%			6%	

### TRUMAN ANNEX ACCESS AND FACILITY IMPROVEMENTS [GATE, ROADWAY & PAVILIONS]

										FY 15/16	FY 16/17	FY 17/18	FY 18/19	FY 19/20	FY 20/21	FY 21/22	Total	Expenditures	Balance
FM#	Contract	Fund	FY	FSTED	Work Program	Port Match	Expiration												
44563019401	G1944	PORT	18/19	\$200,000	\$0	\$200,000	05/31/24	A					\$200,000				\$200,000	\$0.00	\$200,000.00
Total				\$200,000	\$0	\$200,000				\$0	\$0	\$0	\$200,000	\$0	\$0	\$0	\$200,000	\$0.00	\$200,000.00
% Complete													0%					0%	

### SEAPORT SECURITY GRANT PROGRAM [CAMERAS]

										FY 15/16	FY 16/17	FY 17/18	FY 18/19	FY 19/20	FY 20/21	FY 21/22	Total	Expenditures	Balance
FM#	Contract	Fund	FY	FSTED	Work Program	Port Match	Expiration												
44489719401	G1448	DPTO	18/19	\$83,484	\$0	\$27,828	12/31/20	A					\$83,484				\$83,484	\$0.00	\$83,484.00
Total				\$83,484	\$0	\$27,828				\$0	\$0	\$0	\$83,484	\$0	\$0	\$0	\$83,484	\$0.00	\$83,484.00
% Complete													0%					0%	

### MALLORY SQUARE & BERTHING DOLPHINS

										FY 15/16	FY 16/17	FY 17/18	FY 18/19	FY 19/20	FY 20/21	FY 21/22	Total	Expenditures	Balance
Total				\$762,000	\$0	\$475,000				\$0	\$0	\$0	\$0	\$0	\$0	\$0	\$762,000	\$762,000.00	\$0.00
% Complete																		100%	

### TRUMAN ANNEX SEAWALL RESTORATION [FY17&18]

										FY 15/16	FY 16/17	FY 17/18	FY 18/19	FY 19/20	FY 20/21	FY 21/22	Total	Expenditures	Balance
Total				\$0	\$512,730	\$512,730				\$0	\$256,365	\$256,365	\$0	\$0	\$0	\$0	\$512,730	\$512,730.00	\$0.00
% Complete											100%	100%						100%	

### GRAND TOTAL

				FSTED	Work Program	Port Match				FY 15/16	FY 16/17	FY 17/18	FY 18/19	FY 19/20	FY 20/21	FY 21/22	Total	Expenditures	Balance
				\$2,462,151	\$1,032,730	\$2,427,781				\$0	\$256,365	\$256,365	\$708,484	\$989,832	\$521,835	\$0	\$3,494,881	\$1,393,100.72	\$2,101,780.28
																		40%	

**Disclaimer:** This document is developed and distributed for grant management purposes.

**DDR:** District Dedicated Revenue **DIS:** Strategic Intermodal **DPTO:** District State Public Transportation **GMR:** Growth Management Revenue **SIB:** State Infrastructure Bank Loan **POED:** Seaport Investment Program **PORB:** PORT Funds Returned from Bonds Debt Service Refund "I" = Intermodal Development Grant

**PORT:** Florida Seaport Transportation & Economic Development (FSTED) Council Deep Water Ports Program **DS:** State Primary Highways & PTO **Red Font:** Not JPA'd or PTGA'd **Purple Font:** Pending Admin Activities **"U" / "A"** = Un / Authorized **"C"** = Closed **"D"** = Dropped **"R"** = Replaced

Port of St. Petersburg

INFRASTRUCTURE IMPROVEMENTS [BERTH REHAB ITEMS / FENDERS]									FY 15/16	FY 16/17	FY 17/18	FY 18/19	FY 19/20	FY 20/21	FY 21/22	Total	Expenditures	Balance
FM#	Contract	Fund	FY	FSTED	Work Program	Port Match	Expiration	A										
43904119401	G1H98	POED	19/20		\$0	\$127,196	\$42,399	06/30/23					\$127,196			\$127,196	\$0.00	\$127,196.00
Total									\$0	\$0	\$0	\$0	\$127,196	\$0	\$0	\$127,196	\$0.00	\$127,196.00
% Complete													0%				0%	

INFRASTRUCTURE/TERMINAL REPAIR [FY14&15]									FY 15/16	FY 16/17	FY 17/18	FY 18/19	FY 19/20	FY 20/21	FY 21/22	Total	Expenditures	Balance
Total									\$0	\$0	\$0	\$0	\$0	\$0	\$0	\$100,000	\$100,000.00	\$0.00
% Complete																	100%	

PASSENGER/CHARTER FACILITY [FY17]									FY 15/16	FY 16/17	FY 17/18	FY 18/19	FY 19/20	FY 20/21	FY 21/22	Total	Expenditures	Balance
Total									\$0	\$0	\$0	\$0	\$0	\$0	\$0	\$0	\$0.00	\$0.00
% Complete																		

WHARF STRUCTURAL REPAIRS [FY08 - FY13]									FY 15/16	FY 16/17	FY 17/18	FY 18/19	FY 19/20	FY 20/21	FY 21/22	Total	Expenditures	Balance
Total									\$2,625,801	\$0	\$2,541,103	\$0	\$0	\$0	\$0	\$2,625,801	\$2,625,801.08	\$0.00
% Complete																	100%	

GRAND TOTAL				FSTED	Work Program	Port Match			FY 15/16	FY 16/17	FY 17/18	FY 18/19	FY 19/20	FY 20/21	FY 21/22	Total	Expenditures	Balance
				\$2,675,801	\$177,196	\$2,683,502			\$0	\$0	\$0	\$0	\$127,196	\$0	\$0	\$2,852,997	\$2,725,801.08	\$127,196.00
																	96%	

**Disclaimer:** This document is developed and distributed for grant management purposes.

**DDR:** District Dedicated Revenue   **DIS:** Strategic Intermodal   **DPTO:** District State Public Transportation   **GMR:** Growth Management Revenue   **SIB:** State Infrastructure Bank Loan   **POED:** Seaport Investment Program   **PORB:** PORT Funds Returned from Bonds Debt Service Refund   **"I"** = Intermodal Development Grant

**PORT:** Florida Seaport Transportation & Economic Development (FSTED) Council Deep Water Ports Program   **DS:** State Primary Highways & PTO   **Red Font:** Not JPA'd or PTGA'd   **Purple Font:** Pending Admin Activities   **"U"** / **"A"** = Un / Authorized   **"C"** = Closed   **"D"** = Dropped   **"R"** = Replaced

Port Tampa Bay

EASTPORT BERTH DEVELOPMENT

									FY 15/16	FY 16/17	FY 17/18	FY 18/19	FY 19/20	FY 20/21	FY 21/22	Total	Expenditures	Balance
FM#	Contract	Fund	FY	FSTED	Work Program	Port Match	Expiration											
43324019401	G0U81	GMR	17/18		\$0	\$113,473	\$113,473	06/30/21	C			\$113,473				\$113,473	\$113,472.98	\$0.00
43324019402	G1O96	DPTO-I	20/21		\$0	\$1,500,000	\$1,500,000		A					\$1,500,000		\$1,500,000	\$0.00	\$1,500,000.00
43324019402		DDR-I	21/22		\$0	\$1,500,000	\$1,500,000		U						\$1,500,000	\$1,500,000	\$0.00	\$1,500,000.00
Total					\$0	\$3,113,473	\$3,113,473			\$0	\$0	\$113,473	\$0	\$0	\$1,500,000	\$1,500,000	\$113,472.98	\$3,000,000.00
% Complete											100%			0%	0%		4%	

HOOKERS POINT IMPROVEMENTS [BERTH 214 & UPLANDS]

									FY 15/16	FY 16/17	FY 17/18	FY 18/19	FY 19/20	FY 20/21	FY 21/22	Total	Expenditures	Balance
FM#	Contract	Fund	FY	FSTED	Work Program	Port Match	Expiration											
43513019401	ARR57	PORT	16/17	\$2,100,000	\$0	\$2,100,000	06/30/21	A		\$2,100,000						\$2,100,000	\$68,674.83	\$2,031,325.17
43513019402	G1792	GMR	18/19	\$0	\$6,486,528	\$9,586,528	06/15/24	A				\$6,486,528				\$6,486,528	\$0.00	\$6,486,528.00
43513019402	G1792	PORT	18/19	\$3,100,000	\$0	\$3,100,000	06/15/24	A				\$3,100,000				\$3,100,000	\$0.00	\$3,100,000.00
43513019404		PORT	20/21	\$3,587,612	\$0	\$3,587,612		A						\$3,587,612		\$3,587,612	\$0.00	\$3,587,612.00
Total				\$8,787,612	\$6,486,528	\$15,274,140			\$0	\$2,100,000	\$0	\$9,586,528	\$0	\$3,587,612	\$0	\$15,274,140	\$68,674.83	\$15,205,465.17
% Complete										3%		0%		0%			0%	

SEAPORT SECURITY GRANT PROGRAM [COMMAND AND CONTROL SYSTEM]

									FY 15/16	FY 16/17	FY 17/18	FY 18/19	FY 19/20	FY 20/21	FY 21/22	Total	Expenditures	Balance
FM#	Contract	Fund	FY	FSTED	Work Program	Port Match	Expiration											
44490829401	G1H66	EM20	19/20	\$168,750	\$0	\$56,250	06/30/24	A					\$168,750			\$168,750	\$0.00	\$168,750.00
Total				\$168,750	\$0	\$56,250			\$0	\$0	\$0	\$0	\$168,750	\$0	\$0	\$168,750	\$0.00	\$168,750.00
% Complete													0%				0%	

DREDGING [BERTH & NAVIGATIONAL IMPROVEMENTS]

									FY 15/16	FY 16/17	FY 17/18	FY 18/19	FY 19/20	FY 20/21	FY 21/22	Total	Expenditures	Balance
FM#	Contract	Fund	FY	FSTED	Work Program	Port Match	Expiration											
43332019402	G1E33	PORT	19/20	\$3,000,000	\$0	\$3,000,000	10/31/24	A					\$3,000,000			\$3,000,000	\$686,475.45	\$2,313,524.55
Total				\$3,000,000	\$0	\$3,000,000			\$0	\$0	\$0	\$0	\$3,000,000	\$0	\$0	\$3,000,000	\$686,475.45	\$2,313,524.55
% Complete													23%				23%	

INTERMODAL CARGO HANDLING [REDWING RAIL YARD & UNIT TRAIN INFRASTRUCTURE]

									FY 15/16	FY 16/17	FY 17/18	FY 18/19	FY 19/20	FY 20/21	FY 21/22	Total	Expenditures	Balance
FM#	Contract	Fund	FY	FSTED	Work Program	Port Match	Expiration											
41274619418	G1801	GMR	18/19	\$0	\$3,000,000	\$3,000,000	06/30/23	A				\$3,000,000				\$3,000,000	\$60,550.00	\$2,939,450.00
Total				\$0	\$3,000,000	\$3,000,000			\$0	\$0	\$0	\$3,000,000	\$0	\$0	\$0	\$3,000,000	\$60,550.00	\$2,939,450.00
% Complete												2%					2%	

SEAPORT SECURITY/VEHICLE MITIGATION BARRIER

									FY 15/16	FY 16/17	FY 17/18	FY 18/19	FY 19/20	FY 20/21	FY 21/22	Total	Expenditures	Balance
FM#	Contract	Fund	FY	FSTED	Work Program	Port Match	Expiration											
44490819401	G1479	DPTO	18/19	\$70,814	\$0	\$23,604	06/30/22	A				\$70,814				\$70,814	\$70,437.94	\$376.06
Total				\$70,814	\$0	\$23,604			\$0	\$0	\$0	\$70,814	\$0	\$0	\$0	\$70,814	\$70,437.94	\$376.06
% Complete												99%					99%	

HOOKERS POINT INTERMODAL IMPROVEMENTS [TURNING BASIN]

									FY 15/16	FY 16/17	FY 17/18	FY 18/19	FY 19/20	FY 20/21	FY 21/22	Total	Expenditures	Balance
FM#	Contract	Fund	FY	FSTED	Work Program	Port Match	Expiration											
44033519401	G1589	DDR-I	18/19	\$0	\$1,492,807	\$497,603	02/28/24	A				\$1,492,807				\$1,492,807	\$0.00	\$1,492,807.00
Total				\$0	\$1,492,807	\$497,603			\$0	\$0	\$0	\$1,492,807	\$0	\$0	\$0	\$1,492,807	\$0.00	\$1,492,807.00
% Complete												0%					0%	

PORT SUTTON INTERMODAL IMPROVEMENTS [BERTH 3]

									FY 15/16	FY 16/17	FY 17/18	FY 18/19	FY 19/20	FY 20/21	FY 21/22	Total	Expenditures	Balance
Total				\$0	\$1,427,041	\$1,427,041			\$0	\$0	\$1,427,041	\$0	\$0	\$0	\$0	\$1,427,041	\$1,427,041.00	\$0.00
% Complete											100%						100%	

Disclaimer: This document is developed and distributed for grant management purposes.

DDR: District Dedicated Revenue    DIS: Strategic Intermodal    DPTO: District State Public Transportation    GMR: Growth Management Revenue    SIB: State Infrastructure Bank Loan    POED: Seaport Investment Program    PORB: PORT Funds Returned from Bonds Debt Service Refund    "I" = Intermodal Development Grant  
PORT: Florida Seaport Transportation & Economic Development (FSTED) Council Deep Water Ports Program    DS: State Primary Highways & PTO    Red Font: Not JPA'd or PTGA'd    Purple Font: Pending Admin Activities    "U" / "A" = Un / Authorized    "C" = Closed    "D" = Dropped    "R" = Replaced

Port Tampa Bay *continued*

BIG BEND CHANNEL IMPROVEMENTS									FY 15/16	FY 16/17	FY 17/18	FY 18/19	FY 19/20	FY 20/21	FY 21/22	Total	Expenditures	Balance
FM#	Contract	Fund	FY	FSTED	Work Program	Port Match	Expiration											
43130219401	G0864	GMR	15/16	\$0	\$175,000	\$175,000	06/30/20	C	\$175,000							\$175,000	\$175,000.00	\$0.00
43130219401	G0864	GMR	16/17	\$0	\$2,000,000	\$2,000,000	06/30/20	C		\$2,000,000						\$2,000,000	\$2,000,000.00	\$0.00
43130219401	G0864	LF	17/18	\$0		\$8,800,000		U				\$0				\$0	\$0.00	\$0.00
43130219401	G0864	SIWR	18/19	\$0	\$3,025,000	\$14,749,825	12/30/21	A				\$3,025,000				\$3,025,000	\$2,327,609.66	\$697,390.34
43130219401	G0864	GMR	18/19	\$0	\$17,544,475		12/30/21	A				\$17,544,475				\$17,544,475	\$12,357,127.84	\$5,187,347.16
Total				\$0	\$22,744,475	\$25,724,825			\$175,000	\$2,000,000	\$0	\$20,569,475	\$0	\$0	\$0	\$22,744,475	\$16,859,737.50	\$5,884,737.50
% Complete									100%	100%		71%					74%	

PORT SUTTON CARGO BERTH IMPROVEMENTS [BERTH 3 DESIGN, PERMIT & CONSTRUCTION]									FY 15/16	FY 16/17	FY 17/18	FY 18/19	FY 19/20	FY 20/21	FY 21/22	Total	Expenditures	Balance
Total				\$1,150,000	\$0	\$383,333			\$0	\$0	\$1,150,000	\$0	\$0	\$0	\$0	\$1,150,000	\$1,150,000.00	\$0.00
% Complete											100%						100%	

HOOKERS POINT - SOUTH EMERGENCY GATEWAY RAIL AREA									FY 15/16	FY 16/17	FY 17/18	FY 18/19	FY 19/20	FY 20/21	FY 21/22	Total	Expenditures	Balance
FM#	Contract	Fund	FY	FSTED	Work Program	Port Match	Expiration											
44092919401	G0I34	DDR-I	16/17	\$0	\$477,231	\$477,231	06/30/20	A		\$477,231						\$477,231	\$138,360.16	\$338,870.84
Total				\$0	\$477,231	\$477,231			\$0	\$477,231	\$0	\$0	\$0	\$0	\$0	\$477,231	\$138,360.16	\$338,870.84
% Complete										29%							29%	

INTERMODAL CARGO HANDLING [SOUTHBAY DEV KRACKER AVE LANE WIDENING]									FY 15/16	FY 16/17	FY 17/18	FY 18/19	FY 19/20	FY 20/21	FY 21/22	Total	Expenditures	Balance
Total				\$0	\$703,472	\$703,472			\$0	\$703,472	\$0	\$0	\$0	\$0	\$0	\$703,472	\$703,472.25	\$0.00
% Complete										100%							100%	

HOOKERS POINT IMPROVEMENTS [PH1 INTERMODAL RAIL SITEWORK & DEV; B 214 UPLANDS]									FY 15/16	FY 16/17	FY 17/18	FY 18/19	FY 19/20	FY 20/21	FY 21/22	Total	Expenditures	Balance
FM#	Contract	Fund	FY	FSTED	Work Program	Port Match	Expiration											
43513019401	ARR57	PORT	14/15	\$2,200,000	\$0	\$2,200,000	06/30/21	C								\$2,200,000	\$2,200,000.00	\$0.00
43513019401	ARR57	PORT	15/16	\$2,000,000	\$0	\$2,000,000	06/30/21	A	\$2,000,000							\$2,000,000	\$1,999,999.98	\$0.00
Total				\$4,200,000	\$0	\$4,200,000			\$2,000,000	\$0	\$0	\$0	\$0	\$0	\$0	\$4,200,000	\$4,199,999.98	\$0.00
% Complete									100%								100%	

CONTAINER YARD IMPROVEMENTS [HOOKERS SITEWORK/RAIL/RD/WARE & B 210/211 UPLANDS]									FY 15/16	FY 16/17	FY 17/18	FY 18/19	FY 19/20	FY 20/21	FY 21/22	Total	Expenditures	Balance
FM#	Contract	Fund	FY	FSTED	Work Program	Port Match	Expiration											
42282629401	ARR56	GMR	14/15	\$0	\$10,400,000	\$10,400,000	06/30/20	C								\$10,400,000	\$10,400,000.00	\$0.00
42282629401	ARR56	GMR	15/16	\$0	\$5,725,000	\$5,725,000	12/30/20	A	\$5,725,000							\$5,725,000	\$1,190,372.17	\$4,534,627.83
Total				\$0	\$16,125,000	\$16,125,000			\$5,725,000	\$0	\$0	\$0	\$0	\$0	\$0	\$16,125,000	\$11,590,372.17	\$4,534,627.83
% Complete									21%								72%	

GRAND TOTAL				FSTED	Work Program	Port Match			FY 15/16	FY 16/17	FY 17/18	FY 18/19	FY 19/20	FY 20/21	FY 21/22	Total	Expenditures	Balance
				\$17,377,176	\$55,570,027	\$74,005,972			\$7,900,000	\$7,380,703	\$2,690,514	\$44,306,152	\$3,168,750	\$8,675,224	\$1,500,000	\$72,947,203	\$37,068,594	\$35,878,609
																	51%	

**Disclaimer:** This document is developed and distributed for grant management purposes.  
**DDR:** District Dedicated Revenue   **DIS:** Strategic Intermodal   **DPTO:** District State Public Transportation   **GMR:** Growth Management Revenue   **SIB:** State Infrastructure Bank Loan   **POED:** Seaport Investment Program   **PORB:** PORT Funds Returned from Bonds Debt Service Refund   **"I"** = Intermodal Development Grant  
**PORT:** Florida Seaport Transportation & Economic Development (FSTED) Council Deep Water Ports Program   **DS:** State Primary Highways & PTO   **Red Font:** Not JPA'd or PTGA'd   **Purple Font:** Pending Admin Activities   **"U"** / **"A"** = Un / Authorized   **"C"** = Closed   **"D"** = Dropped   **"R"** = Replaced

**TAB 7b**  
**Approval of Reallocation of FY 20/21**  
**FSTED Program Funds**

ST. LUCIE COUNTY  
BOARD OF COUNTY  
COMMISSIONERS

LINDA BARTZ  
DISTRICT 3

CATHY TOWNSEND  
CHAIR  
DISTRICT 5

CHRIS DZADOVSKY  
VICE-CHAIR  
DISTRICT 1

SEAN MITCHELL  
DISTRICT 2

FRANNIE HUTCHINSON  
DISTRICT 4

HOWARD N. TIPTON  
COUNTY ADMINISTRATOR

DAN MCINTYRE  
COUNTY ATTORNEY

PHONE  
(772) 462-2350

TDD  
(772) 462-1428

FAX  
(772) 462-1718

WEBSITE  
WWW.STLUCIECO.GOV

August 12, 2020

Amy Miller, Chair  
Florida Seaport Transportation &  
Economic Development Council  
502 East Jefferson Street  
Tallahassee, Florida 32301

**Reference:** Reallocation of FSTED funds, Port of Fort Pierce

Dear Ms. Miller,

The Port of Fort Pierce respectfully requests the reallocation of FSTED funds due to the need for additional funding caused by a shortfall of funding on the Rehabilitation of South Dock Project (UPIN PFS0002591). The Port is working with our tenant who has started the design phase for the improvements to this area, with the intent of using this south dock area for the vessel staging for the mega-yacht MRO business. This project is a critical path item towards the repurposing of the terminal and use the world's largest mobile boat hoist.

The requested reallocation is to move fiscal year 2016 FSTED funds totaling \$29,972.50 from the Fisherman's Wharf Bulkhead Project (UPIN PFS0002448) to the Rehabilitation of South Dock Project (UPIN PFS0002951). Both of these projects are FSTED approved and funded. The Port has identified the rehabilitation of the South Dock as the best use of these FSTED funds, given the planned immediate use of this area by our tenant.

We have contacted the Florida Department of Transportation and informed them that this request is forthcoming. We appreciate your assistance and partnership on these projects, and value the continued relationship that we have with FSTED and the Florida Department of Transportation. Thank you for your consideration, should you have any questions, please do not hesitate to contact me at (772)-462-2350.

Sincerely,



Stan Payne  
Executive Director  
Airport & Seaport  
Treasure Coast International Airport and Port of Ft. Pierce





July 30, 2020

FSTED Council  
Attn: Amy Miller, Chair  
502 E. Jefferson St.  
Tallahassee, FL 32301

VIA ELECTRONIC MAIL

Chairwoman Miller,

On behalf of the Port of Pensacola, I would like to request reallocation of the following described funds.

Phase 1 of the Port's Berth 6 Rehabilitation project (FPN# 42315169401, Grant # AR-223) was completed in March of 2020 with \$753,061.48 in FSTED funds remaining. The large sum of leftover funds is a result of the project budgeting and bidding process. The project involved rehabilitation/reconstruction of a dock originally built in the late 1960s. Due to the age and assumed condition of the underwater infrastructure, the project budget included costs for total replacement of the 580' bulkhead. The actual extent of bulkhead repair/replacement required was determined via a comprehensive underwater inspection by the winning bidder, which showed the bulkhead to be in remarkably good condition and only moderate reparative work required, resulting in substantial savings.

After ensuring all project invoices had been paid, the Port notified FDOT District 3 of project completion on June 16, 2020. Since the JPA was set to expire July 31, 2020, the Port requested an extension of the JPA through the end of calendar year 2020 to facilitate FSTED reallocation of the remaining funds at the fall FSTED Council meeting. FDOT responded with a preference to close out the grant since the project was complete and this was one of only a few grants remaining open on the old JPA contract form. FDOT indicated that upon release of the funds from the project, the remaining funds would be held in item 431764-1 Seaport (FSTED) Districtwide Box (i.e. FSTED Box) until FSTED takes action to reallocate them. Following a lengthy discussion between FDOT District 3 staff, FDOT Central Office staff, Port staff and FSTED staff in which FDOT explained their internal funds allocation/reallocation processes, the Port agreed to close out the subject JPA and move the remaining funds into the "FSTED Box."

On that basis, I would like to request reallocation of \$753,061.48 in FSTED funds requiring \$183,604.83 in local match, FROM either FPN # 42315169401, Grant # AR223 **OR** from FDOT Work Program Item 431764-1, whichever location currently houses the subject funds, TO FSTED Grant FPN # 44102729401, Grant # G1654 – Port of Pensacola Berth Dredging Initiative.

Best Regards,

M. Clark Merritt, Jr.  
Deputy Port Director

**TAB 7c**  
**Agency Reports on Consistency Review**  
**of FY 21/22 FSTED Program Project**  
**Applications**

**Ron DeSantis**  
GOVERNOR



**Ken Lawson**  
EXECUTIVE DIRECTOR

August 20, 2020

Ms. Amy Miller, Chair  
Florida Seaport Transportation and  
Economic Development Council  
Florida Ports Council  
502 East Jefferson Street  
Tallahassee, FL 32301

Dear Ms. Miller:

As requested by the Florida Transportation and Seaport Economic Development Council, the Department of Economic Opportunity staff reviewed the seaport project applications on the attached project list.

In compliance with section 311.09(7), Florida Statutes, each project was evaluated for its economic benefit and to determine if the project was consistent with state, regional, and local plans; the Florida Seaport Mission Plan; and the state's economic development goals and policies. The projects on the attached list were found to be consistent based on the criteria stated in section 311.09, Florida Statutes.

If you have any questions or require additional information, please contact Jason Rojas, Director, Division of Strategic Business Development at (850) 717-8960.

Sincerely,

A handwritten signature in blue ink, appearing to read 'Ken Lawson', is written over a horizontal line.

Ken Lawson

KL/rf

Attachment  
cc: Casey Erin Grigsby, Florida Ports Council

Florida Department of Economic Opportunity | Caldwell Building | 107 E. Madison Street | Tallahassee, FL 32399  
850.245.7105 | [www.FloridaJobs.org](http://www.FloridaJobs.org)  
[www.twitter.com/FLDEO](https://www.twitter.com/FLDEO) | [www.facebook.com/FLDEO](https://www.facebook.com/FLDEO)

An equal opportunity employer/program. Auxiliary aids and service are available upon request to individuals with disabilities. All voice telephone numbers on this document may be reached by persons using TTY/TTD equipment via the Florida Relay Service at 711.

DEO Seaport Project List FY 21-22

Port	UPIN (PFS000)	Project Name
Port Canaveral	2764	North Cargo Berth 3 (NCB#)
	2763	Terminal Improvement
	2668	Port-Wide Berth Rehabilitation
	2669	North Cargo Berth 8 Extension
	2768	North Cargo Berth 4 (NCB4)
	2671	Maintenance Dredging
Jacksonville Port Authority	2682	[DMMA] Jaxport Maintenance Dredging
	1853	Talleyrand Marine Terminal Development & Expansion
	1845	Dames Point Marine Terminal Development & Expansion
	1852	Blount Island Marine Terminal Improvement & Expansion
Ocean Highway and Port Authority	2773	Pier Improvements & Maintenance
	2772	Landside Improvements
Port Everglades	2315	Southport Turning Notch Extension and Southport Crane Infrastructure Improvements
	2756	Three Additional Super-Post Panamax Cranes
	2380	Southport Phase IX-A Container Yard
	2624	Slip 1- New Bulkhead at Berths 9&10 Construction
	2540	Deepening and Widening- Construction
	2753	Entrance Channel North Wall
	2522	New Bulkheads at Berths 1,2, & 3
	2685	Port Crane Improvements/Upgrades
	2558	Cruise Terminal 21 Improvements/Expansion
	2683	New Public Works Facility Building
	2519	New Bulkheads 16, 17, and 18
	2520	New Bulkheads at Berths 21 & 22
	2684	Berths 14 & 15 New Bulkheads
	2751	1-595 Flyover

DEO Seaport Project List FY 21-22

	2755	Ro-Ro Yard Relocation/Expansion
	2754	Cruise Terminal 29 Improvements/Expansion
	2440	Neo-Bulk Storage Yard
	2291	Super-Post Panamax Cranes
Port Manatee	2744	Dry/Chill Warehouse
	2653	Berth 4 Reconstruction
	2651	Berth Rehabilitation and Reconstruction 2021-2026
	2746	Cruise/Ferry Site Location Study
Port Miami	2765	PortMiami- Cruise Terminals Improvement
Port of Fort Pierce	2766	Utility Loop
	2591	[Demo, Site Prep, New Concrete] Rehabilitation of South Dock (Warehouse Demo, Site Prep, New Concrete)
	2679	Port Terminal Improvements
	2760	Port Stormwater Improvements
	2758	Museum Point Piers
	2678	Berth Improvements [FY 2020 Funds]
	2759	Harbour Pointe Development
Port of Key West	2548	Mallory T-Pier Extension & Monopole Installation
Port of Palm Beach	2743	Master Plan 2022
	2757	Cathodic Protection System for Bulkheads
Port Panama City	2748	Container Terminal Improvements
	2750	Purchase of East Terminal Option Land
	2752	East Terminal Warehouse Phase II
Port Tampa Bay	2769	PTB-Two New Gantry Cranes
	2762	PTB New Berth 218 Revised
	2767	Berth 268 Rehabilitation

DEO Seaport Project List FY 21-22

	2761	PTB Navigational Improvements
	2770	PTB New Warehouse Facility



*Florida Department of Transportation*

RON DESANTIS  
GOVERNOR

605 Suwannee Street  
Tallahassee, FL 32399-0450

KEVIN J. THIBAUT, P.E.  
SECRETARY

August 25, 2020

Amy Miller, Chair  
Florida Seaport Transportation and Economic Development Council  
502 East Jefferson Street  
Tallahassee, Florida 32301

RE: Consistency review of Fiscal Year 21/22 Florida Seaport Transportation and Economic Development Program applications

Dear Chairwoman Miller:

This letter supersedes the Florida Department of Transportation's letter dated August 12, 2020. The Department has completed a review of the Fiscal Year 21/22 seaport project applications submitted on August 19, 2020. The project applications have been reviewed for consistency with the Florida Transportation Plan, the Statewide Seaport and Waterways System Plan, and the Department's Adopted Work Program.

The projects, identified in Attachment 1, are consistent with the requirements of Section 311.09(6), F.S.

If FSTED Council members should have questions about the Department's Seaport Program, please contact Dan Fitz-Patrick, Seaport Office Manager at (850) 414-4551.

Sincerely,

Kevin J. Thibault, P.E.  
Secretary

KJT/df

Enclosures

**Attachment 1**

**Section 311.09(6), Florida Statutes, Consistent project applications for Fiscal Year 2022**

FDOT District	Port	Application Number	Application Name (08/19/2020)
1	Port Manatee	PFS0002744	Dry/Chill Warehouse
		PFS0002653	Berth 4 Reconstruction
		PFS0002651	Berth Rehabilitation and Reconstruction 2021-2026
		PFS0002746	Cruise/Ferry Site Location Study
2	Port of Fernandina	PFS0002773	Pier Improvements & Maintenance
	JAXPORT	PFS0001852	Blount Island Marine Terminal Improvement & Expansion
		PFS0001853	Talleyrand Marine Terminal Development & Expansion
		PFS0002682	[DMMA] Jaxport Maintenance Dredging
		PFS0001845	Dames Point Marine Terminal Development & Expansion
3	Port Panama City	PFS0002748	Container Terminal Improvements
		PFS0002750	Purchase of East Terminal Option Land
		PFS0002752	East Terminal Warehouse Phase II
4	Port Everglades	PFS0002291	Super-Post Panamax Cranes
		PFS0002315	Southport Turning Notch Extension and Southport Crane Infrastructure ...
		PFS0002624	Slip 1- New Bulkhead at Berths 9 & 10 - Construction
		PFS0002540	Deepening and Widening - Construction
		PFS0002684	Berths 14 & 15 New Bulkheads
		PFS0002440	Neo-Bulk Storage Yard
		PFS0002558	Cruise Terminal 21 Improvements/Expansion
		PFS0002685	Port Crane Improvements/Upgrades
		PFS0002519	New Bulkheads 16,17, and 18
		PFS0002520	New Bulkheads at Berths 21 & 22
		PFS0002751	I-595 Flyover
		PFS0002753	Entrance Channel North Wall
		PFS0002380	Southport Phase IX-A Container Yard
		PFS0002522	New Bulkheads at Berths 1,2, & 3
		PFS0002754	Cruise Terminal 29 Improvements/Expansion
		PFS0002755	Ro-Ro Yard Relocation/Expansion
		PFS0002683	New Public Works Facility Building
		PFS0002756	Three Additional Super-Post Panamax Cranes
	Port of Fort Pierce	PFS0002759	Harbour Pointe Development
		PFS0002591	[Demo, Site Prep, New Concrete] Rehabilitation of South Dock ...
		PFS0002760	Port Stormwater Improvements
		PFS0002766	Utility Loop
		PFS0002679	Port Terminal Improvements
		PFS0002758	Museum Point Piers
		PFS0002678	Berth Improvements [FY 2020 Funds]
	Port of Palm Beach	PFS0002743	Master Plan 2022
		PFS0002757	Cathodic Protection System For Bulkheads
5	Port Canaveral	PFS0002671	Maintenance Dredging
		PFS0002669	North Cargo Berth 8 Extension
		PFS0002668	Port-wide Berth Rehabilitation
		PFS0002763	Terminal Improvements
		PFS0002764	North Cargo Berth 3 (NCB3)
		PFS0002768	North Cargo Berth 4 (NCB4)
6	Port of Key West	PFS0002548	Mallory T-Pier Extension & Monopole Installation
	Port Miami	PFS0002765	PortMiami - Cruise Terminals Improvement
7	Port Tampa Bay	PFS0002761	PTB Navigational Improvements
		PFS0002762	PTB New Berth 218 Revised
		PFS0002767	Berth 268 Rehabilitation
		PFS0002769	PTB - Two New Gantry Cranes
		PFS0002770	PTB New Warehouse Facility



**TAB 7d**  
**Approval of Recommended FY 21/22**  
**FSTED Program Allocations**

## RECOMMENDATIONS FOR FSTED PROGRAM ALLOCATIONS FOR FY 21/22

Port	Priority	Project	Amount Requested	Recommended FY 21/22 FSTED Allocation
<i>Port Canaveral</i>	1	North Cargo Berth 3 (NCB3)	\$4,800,000	\$3,600,000
<b>Total</b>				<b>\$3,600,000</b>
<i>Port Everglades</i>	1	Southport Turning Notch Extension and Southport Crane Infrastructure Improvements	\$177,639,934	\$3,700,000
<b>Total</b>				<b>\$3,700,000</b>
<i>Port of Fernandina</i>	1	Pier Improvements & Maintenance**	\$450,000	\$201,919.72
<b>Total</b>				<b>\$201,920</b>
<i>Port of Ft. Pierce</i>	1	Utility Loop	\$3,000,000	\$500,000
<b>Total</b>				<b>\$500,000</b>
<i>JAXPORT</i>	1	DMMA-JAXPORT Maintenance Dredging	\$3,000,000	\$3,000,000
	2	Talleyrand Marine Terminal Development & Expansion	\$9,361,195	\$850,000
<b>Total</b>				<b>\$3,850,000</b>
<i>Port of Key West</i>	1	Mallory T-Pier Extension & Monopole Installation	\$708,333	\$350,000
<b>Total</b>				<b>\$350,000</b>
<i>Port Manatee</i>	1	Dry/Chill Warehouse	\$10,550,000	\$2,000,000
<b>Total</b>				<b>\$2,000,000</b>
<i>PortMiami</i>	1	Cruise Terminals Improvement	\$426,750,000	\$3,900,000
<b>Total</b>				<b>\$3,900,000</b>
<i>Port of Palm Beach</i>	2	Master Plan 2022	\$300,000	\$300,000
	3	Cathodic of East Terminal Option Land	\$1,500,000	\$1,000,000
<b>Total</b>				<b>\$1,300,000</b>
<i>Port Panama City</i>	1	Container Terminal Improvements	\$1,700,000	\$1,700,000
<b>Total</b>				<b>\$1,700,000</b>

## RECOMMENDATIONS FOR FSTED PROGRAM ALLOCATIONS FOR FY 21/22

Port	Priority	Project	Amount Requested	Recommended FY 21/22 FSTED Allocation
<i>Port Tampa Bay</i>	1	Two New Gantry Cranes	\$12,000,000	\$3,600,000
<b>Total</b>				<b>\$3,600,000</b>
<i>Data &amp; Planning</i>		Seaport Data & Planning		<b>\$320,000</b>
<b>Total</b>				<b>\$25,021,919.72</b>

PortMiami	\$3,900,000
JAXPORT	\$3,850,000
Port Everglades	\$3,700,000
Port Tampa Bay	\$3,600,000
Port Canaveral	\$3,600,000
Port Manatee	\$2,000,000
Port Panama City	\$1,700,000
Port of Palm Beach	\$1,300,000
Port of Ft. Pierce	\$500,000
Port of Key West	\$350,000
Port of Fernandina**	\$201,920
Data	\$320,000
<b>Total*</b>	<b>\$25,021,919.72</b>

\*\$21,919.72 Additional allocation dollars from debt service

\*\*Funding is contingent upon consistency review from FSTED staff, FDOT, and DEO.

**TAB 8**  
**Other Issues**

**TAB 8a**  
**FSTED Bylaws**

# FSTED

---

## Florida Seaport Transportation and Economic Development Council

### **BY-LAWS**

#### **ARTICLE I** **NAME, LOCATION**

The name of this organization shall be the Florida Seaport Transportation and Economic Development Council, hereinafter referred in these By-Laws, as “the Council.” The principal office of the Council shall be located in Tallahassee, Florida.

#### **ARTICLE II** **OBJECTIVES**

The primary objectives of the Council are as provided by state law, including those statutory requirements contained in Chapter 311, Chapter 315, section 163.3178(2)(k), section 339.135(4), section 341.053, and section 403.061, Florida Statutes. These statutory objectives include, but are not limited to, the requirement that the Council, the Department of Transportation, and the Department of Economic Opportunity work in cooperation to review projects and allocate state funds to finance port transportation or port facilities projects that will improve the movement and intermodal transportation of cargo or passengers in commerce and trade and support the interests, purposes, and requirements of all ports.

#### **ARTICLE III** **MEMBERSHIP**

The membership of the Council shall be the port director, or the port director’s designee, of each of the ports of Jacksonville, Port Canaveral, Port Citrus, Fort Pierce, Palm Beach, Port Everglades, Miami, Port Manatee, St. Petersburg, Tampa, Port St. Joe, Panama City, Pensacola, Key West, and Fernandina; the secretary of the Department of Transportation or his or her designee; and the director of the Department of Economic Opportunity or his or her designee.

#### **ARTICLE IV** **FSTED ORGANIZATION**

A) Governing and Policy-Making Body – The members of the Council are the governing and policy-making body of the Florida Seaport Transportation and Economic Development Program and shall have full power to do any and all things necessary or desirable in carrying out the objectives of said Program, within the limitations provided in law.

B) Chair – The Chair of the Council will be elected by the members of the Council on an annual basis. The election shall be determined by a majority of voting members present at the

meeting. He or she shall preside at all meetings of the Council, and at the discretion of the Council, the Chair may be an ex officio member of any committees of the Council. He or she shall, at his or her own discretion or by decision of the Council, establish all ad hoc committees and task forces and appoint the members thereof. He or she shall perform such other duties as may be provided for in law, these By-Laws or by vote of the Council. The Chair must be an active port director from one of the eligible ports listed in section 311.09(1), Florida Statutes.

C) Vice Chair – The Vice Chair of the Council will be elected in the same manner as the Chair. The Vice Chair is empowered to act, in the absence or disability of the Chair, on behalf of the Chair in all of the Council matters and may, at the discretion of the Council, be an ex officio member of any committees of the Council. The Vice Chair must be an active port director from one of the eligible ports listed in section 311.09(1), Florida Statutes.

D) Treasurer – If desired, the Council may elect a Treasurer of the Council in the same manner as the Chair. The Treasurer shall examine the expenditures of the Council and, if necessary, present a report of the financial condition of the Council at each regular meeting of the Council. The Chair may also create a Ways and Means Committee to examine such issues and report to the Council. The Treasurer, if elected, shall serve as the Chair of the Ways and Means Committee, if created. The Treasurer must be an active port director from one of the eligible ports listed in section 311.09(1), Florida Statutes.

E) Secretary – If desired, the Council may elect a Secretary of the Council in the same manner as the Chair. The Secretary will record all the votes and minutes of the Council, will attend to the serving of notices of all meetings when required, and will keep in safe custody all records of the Council. The Secretary may be any person who is a voting member of the Council. The Council may appoint a staff person to perform ministerial functions as assigned by the Council.

F) Ad hoc Project Review Committee – If desired, the Council may create a standing ad hoc project review committee composed of one representative from the Department of Economic Opportunity, one representative from the Department of Transportation, and two representatives from the seaports appointed by the Chair. The members of the Council may delegate to the ad hoc project review committee any powers necessary for project evaluation or other related issues. If directed by the Chair, the ad hoc project review committee shall review and approve or disapprove emergency project applications or approved projects that have a major change requiring the submission of an emergency application or new application after the Florida Seaport Transportation and Economic Development Program Fiscal Year funding cycle application period has expired.

G) Certification of Instruments – Each officer of the Council shall have the authority, when necessary or appropriate, to certify the records, proceedings, rules and regulations and other instruments of the Council and to attest to the records and proceedings of the Council.

## **ARTICLE V** **MEETINGS**

A) General Meetings – Meetings of the Council shall be held a minimum of two (2) times a year at a location to be determined by the Chair of the Council. Additional meetings of the membership may be held at the call of the Chair or shall be called by the Chair at the written request of a majority of the membership.

B) Monthly Meetings – The Council may hold monthly meetings with representatives from the Department of Economic Opportunity and the Department of Transportation to facilitate the project evaluation process and other related issues.

C) Emergency Meetings – Emergency meetings of the Council may be held at the call of the Chair or shall be called by the Chair at the written request of a majority of the membership. Emergency meetings shall be conducted pursuant to s. 120.525, F.S.

D) Quorum – A majority of the members, or their designees, shall constitute a quorum for the purpose of transacting the business of the Council. The withdrawal of any voting members or their designees after the commencement of a meeting shall have no effect on the existence of a quorum after a quorum has been established at such a meeting. A vote of the majority of the voting members present is sufficient for any action of the Council.

E) Robert's Rules – “Robert’s Rules of Order,” as revised, shall govern the conduct of all meetings of the Council whenever specific provisions of the By-Laws are not applicable.

F) Privilege of the Floor – Privilege of the floor at meetings of the Council shall be governed by these By-Laws, but the presiding officer, at their discretion, may allow any person the courtesy of the floor.

G) Order of Business at Membership Meetings – The order of business at the Council meetings shall be stated in advance of the meetings and materials shall be prepared and made available to all delegates representing members prior to the time of said meeting. Exceptions to the order may be made to accommodate sudden new business or other scheduling issues.

H) Public Meetings – All meetings of the Council shall be scheduled pursuant to the provisions of Chapter 120, Florida Statutes.

## **ARTICLE VI** **COMMITTEES**

The Chair of the Council may establish any committee or task force they deem important to the management of the Council and its programs and shall determine the process and requirements for participation and the selection of members. The Chair or Council can also abolish any such committee or task force so established.



## **ARTICLE VII** **MANAGEMENT**

A) Staff Services for Council Administration – Pursuant to section 311.09(11), the Council may elect to provide an administrative staff or to contract with an entity to provide administrative services to the Council on matters relating to the business of the Council. The staff, if provided, shall perform duties or perform such administrative services as specified by the Council by resolution or written agreement. The cost of such administrative services shall be paid by seaport members with funds derived in accordance with section 311.09(11), Florida Statutes.

B) Selection, Retention of Professional Service Providers – The Council shall select the most competent and qualified providers of professional services which best meets the needs of the Council, in the most economical and efficient manner. The Council shall comply with the provisions of section 287.057, Florida Statutes and Florida Administrative Code 60-A1 for the purchase of any services. If required by Florida law, the Chair shall establish a selection committee to ensure the selection of the most competent and qualified providers of professional services as approved and directed by the Council.

C) Contracts with Professional Service Providers – Except as otherwise exempted by law, moneys derived from the Florida Seaport Transportation and Economic Development Program shall be expended in accordance with the provisions of Chapter 311, Florida Statutes and Florida Administrative Code 60A-1. Providers of professional services shall be engaged by written agreement for a specified period not exceeding a five-year period. These services, contracts, and agreements are subject to audits and review by the Department of Transportation and the Department of Financial Services in addition to an external audit by the FSTED Council.

D) Length of Professional Service Contracts – Services may be renewed for additional specified periods, not exceeding a five-year period, subject to a review and evaluation at least once every five years. A majority of the Council members may request a review and evaluation at any time during the engagement period with a professional service provider. The professional services listed herein may be secured on an ongoing basis or secured solely on an as-needed basis as applicable.

E) External Audit Services – The Council may elect to contract with an entity to provide auditing services to the Council on matters relating to the business of the Council.

F) Other Consulting Services – Such other professional services shall be retained as required and may be included as part of the services enumerated herein. Such services may be retained for periods and terms as required by the Council subject to the other requirements contained in this Article.

## **ARTICLE VIII**

### **FEEES**

A) Schedule – The schedule and payment by the seaport members of any fees and expenses incurred by the Council shall be determined by the Chair and approved by the voting members of the Council. Such fees and expenses shall be incurred in connection with the business of the Council.

B) Compensation – Members of the Council shall serve without compensation but are entitled to receive reimbursement from their respective governing entity for per diem and traveling expenses as provided in s. 112.061, Florida Statutes.

## **ARTICLE IX**

### **AMENDMENTS**

Any and all references to Statute or Administrative Code shall mean the specified Statute or Administrative Code, as amended or revised from time-to-time, or any successor thereto. These By-Laws may be amended by a majority vote of the members in good standing present at any meeting provided a quorum of members is present and the proposed changes have been submitted to the membership in writing at least seven (7) days prior to the meeting. The By-Laws may also be amended on the approval of the majority of the members in good standing received in the course of a mail or email referendum.

*Effective: 08/27/00*  
*Amended: 12/03/00*  
*10/02/13*  
*09/02/20*

# Florida Seaport Transportation and Economic Development Council

Canaveral Port Authority · Port Citrus · Port Everglades · Port of Fernandina · Port of Fort Pierce  
Jacksonville Port Authority · Port of Key West · Manatee County Port Authority · PortMiami · Port of Palm Beach  
Panama City Port Authority · Port of Pensacola · Port St. Joe Port Authority · Port of St. Petersburg · Tampa Port Authority  
Florida Department of Transportation · Florida Department of Economic Opportunity

## **BY-LAWS**

### **ARTICLE I** **NAME, LOCATION**

The name of this organization shall be the Florida Seaport Transportation and Economic Development Council, hereinafter referred in these By-Laws, as “the Council.” The principal office of the Council shall be located in Tallahassee, Florida.

### **ARTICLE II** **OBJECTIVES**

The primary objectives of the Council are as provided by state law, including those statutory requirements contained in Chapter 311, Chapter 315, section 163.3178(2)(k), section 339.135(4), section 341.053, and section 403.061, Florida Statutes. These statutory objectives include, but are not limited to, the requirement that the Council, the Department of Transportation, and the Department of Economic Opportunity work in cooperation to review projects and allocate state funds to finance port transportation or port facilities projects that will improve the movement and intermodal transportation of cargo or passengers in commerce and trade and support the interests, purposes, and requirements of all ports.

- The primary objectives of the Council are as provided in Chapter 311, Florida Statutes, and sections 320.20(3) and (4), Florida Statutes. -

### **ARTICLE III** **MEMBERSHIP**

The membership of the Council shall be the port director, or the port director’s designee, of each of the ports of Jacksonville, Port Canaveral, Port Citrus, Fort Pierce, Palm Beach, Port Everglades, Miami, Port Manatee, St. Petersburg, Tampa, Port St. Joe, Panama City, Pensacola, Key West, and Fernandina; the secretary of the Department of Transportation or his or her designee; and the director of the Department of Economic Opportunity or his or her designee.

The membership of the Council shall be constituted as defined by section 311.09, Florida Statutes.

### **ARTICLE IV** **ESTED ORGANIZATION**

A) Governing and Policy-Making Body – The members of the Council are the governing and policy-making body of the Florida Seaport Transportation and Economic Development

Program and shall have full power to do any and all things necessary or desirable in carrying out the objectives of ~~said~~the Program, within the limitations provided in law.

B) Chair – The Chair of the Council will be elected by the members of the Council on an annual basis. The election shall be determined by a majority of voting members present at the meeting. He or she shall preside at all meetings of the Council, and at the discretion of the Council, the Chair may be an ex officio member of any committees of the Council. He or she shall, at his or her own discretion or by decision of the Council, establish all ad hoc committees and task forces and appoint the members thereof. He or she shall perform such other duties as may be provided for in law, these By-Laws or by vote of the Council. The Chair must be an active port director from one of the eligible ports listed in section 311.09(1), Florida Statutes.

C) Vice Chair – The Vice Chair of the Council will be elected in the same manner as the Chair. The Vice Chair is empowered to act, in the absence or disability of the Chair, on behalf of the Chair in all of the Council matters and may, at the discretion of the Council, be an ex officio member of any committees of the Council. The Vice Chair must be an active port director from one of the eligible ports listed in section 311.09(1), Florida Statutes.

D) Treasurer – If desired, the Council may elect a Treasurer of the Council in the same manner as the Chair. The Treasurer shall examine the expenditures of the Council and ~~and~~ ~~shall if necessary,~~ present a report of the financial condition of the Council at each regular meeting of the Council. The Chair may also create a Ways and Means Committee to examine such issues and report to the Council. The Treasurer, if elected, shall serve as the Chair of the Ways and Means Committee, if created. The Treasurer must be an active port director from one of the eligible ports listed in section 311.09(1), Florida Statutes.

E) Secretary – If desired, the Council may elect a Secretary of the Council in the same manner as the Chair. The Secretary will record all the votes and minutes of the Council, will attend to the serving of notices of all meetings when required, and will keep in safe custody all records of the Council. The Secretary may be any person who is a voting member of the Council. The Council may appoint a staff person to perform ~~the~~ ministerial functions ~~as assigned~~required by the ~~Council~~Office of the Secretary.

F) Ad hoc Project Review Committee – If desired, the Council may create a standing ad hoc project review committee composed of one representative from the Department of Economic Opportunity, one representative from the Department of Transportation, and two representatives from the seaports appointed by the Chair. The members of the Council may delegate to the ad hoc project review committee any powers necessary for project evaluation or other related issues. If directed by the Chair, the ad hoc project review committee shall review and approve or disapprove emergency project applications or approved projects that have a major change requiring the submission of an emergency application or new application after the Florida Seaport Transportation and Economic Development Program Fiscal Year funding cycle application period has expired.

G) Certification of Instruments – Each officer of the Council shall have the authority, when necessary or appropriate, to certify the records, proceedings, rules and regulations and other instruments of the Council and to attest to the records and proceedings of the Council.

## **ARTICLE V** **MEETINGS**

A) General Meetings – Meetings of the Council shall be held a minimum of two (2) times a year at a location to be determined by the Chair of the Council. Additional meetings of the membership may be held at the call of the Chair or shall be called by the Chair at the written request of a majority of the membership.

B) Monthly Meetings – The Council may hold monthly meetings with representatives from the Department of Economic Opportunity and the Department of Transportation to facilitate the project evaluation process and other related issues.

C) Emergency Meetings – Emergency meetings of the Council may be held at the call of the Chair or shall be called by the Chair at the written request of a majority of the membership. Emergency meetings shall be conducted pursuant to s. 120.525, ~~(3)~~ F.S.

D) Quorum – A majority of the members, or their designees, shall constitute a quorum for the purpose of transacting the business of the Council. The withdrawal of any voting members or their designees after the commencement of a meeting shall have no effect on the existence of a quorum after a quorum has been established at such a meeting. A vote of the majority of the voting members present is sufficient for any action of the Council.

E) Robert's Rules – “Robert’s Rules of Order,” as revised, shall govern the conduct of all meetings of the Council whenever specific provisions of the By-Laws are not applicable.

F) Privilege of the Floor – Privilege of the floor at meetings of the Council shall be governed by these By-Laws, but the presiding officer, at their discretion, may allow any person the courtesy of the floor.

G) Order of Business at Membership Meetings – The order of business at the Council meetings shall be stated in advance of the meetings and materials shall be prepared and made available to all delegates representing members prior to the time of said meeting. Exceptions to the order may be made to accommodate sudden new business or other scheduling issues.

H) Public Meetings – All meetings of the Council shall be scheduled pursuant to the provisions of Chapter 120, Florida Statutes.

## **ARTICLE VI** **COMMITTEES**

The Chair of the Council may establish any committee or task force they deem important to the management of the Council and its programs and shall determine the process and requirements for participation and the selection of members. The Chair or Council can also abolish any such committee or task force so established.

## **ARTICLE VII** **MANAGEMENT**

A) Staff Services for Council Administration – Pursuant to section 311.09(11), the Council may elect to provide an administrative staff or to contract with an entity to provide administrative services to the Council on matters relating to the business of the Council. The staff, if provided, shall perform duties or perform such administrative services as specified by the Council by resolution or written agreement. The cost of such administrative services shall be paid by seaport members with funds derived in accordance with section 311.09(11), Florida Statutes.

BA) Selection, Retention of Professional Service Providers – The Council shall select the most competent and qualified providers of professional services which best meets the needs of the Council, in the most economical and efficient manner. ~~The~~ For the purchase of any service by the Council shall comply with the provisions of funds provided pursuant to section 287.057~~311.07~~, Florida Statutes and Florida Administrative Code 60-A1 for the purchase of any services. If required by Florida law, which cost in excess of \$25,000, the Chair shall establish a selection committee to ensure, or in the selection of alternative, direct the Council's administrative staff, to recommend to the Council the most competent and qualified providers of professional services as approved and directed by the Council.

C) Contracts with Professional Service Providers – Except as otherwise exempted by law, moneys derived from the Florida Seaport Transportation and Economic Development Program shall be expended in accordance with the provisions of Chapter 311 section 287.057, Florida Statutes and Florida Administrative Code 60A-1. Providers of professional services shall be engaged by written agreement for a specified period not exceeding a five-year period. These services, contracts, and agreements are subject to audits and review by the Department of Transportation and the Department of Financial Services in addition to an external audit by the FSTED Council.

D) Length of Professional Service Contracts – Services may be renewed for additional specified periods, not exceeding a five-year period, subject to a review and evaluation at least once every five years. A majority of the Council members may request a review and evaluation at any time during the engagement period with a professional service provider. The professional services listed herein may be secured on an ongoing basis or secured solely on an as-needed basis as applicable.

~~E)1. Staff Services for Council Administration~~ – Pursuant to section 311.09(12), the Council may elect to provide an administrative staff or to contract with an entity to provide administrative services to the Council on matters relating to the business of the Council. The staff, if provided, shall perform those duties or perform such administrative services as specified by the Council by resolution or written agreement. The cost of such administrative services shall be paid with funds derived pursuant to section 311.09(12), Florida Statutes.

2) External Audit Services – The Council may elect to contract with an entity to provide auditing services to the Council on matters relating to the business of the Council.

F)3) Other Consulting Services – Such other professional services shall be retained as required and may be included as part of the services enumerated herein. Such services may be retained for periods and terms as required by the Council subject to the other requirements

contained in this Article.

## **ARTICLE VIII**

### **FEES**

A) Schedule – The schedule and payment by the seaport members of any fees and expenses incurred by the Council shall be determined by the ~~Chair~~Chairman and approved by the voting members of the Council. Such fees and expenses shall be incurred in connection with the business of the Council.

B) Compensation – Members of the Council shall serve without compensation but are entitled to receive reimbursement from their respective governing entity for per diem and traveling expenses as provided in s. 112.061, Florida Statutes. ~~The Council may elect to provide an administrative staff for services to the Council on matters relating to the Florida Seaport Transportation and Economic Development Program and the Council. The cost for such administrative services shall be paid by all ports that receive funding from the Florida Seaport Transportation and Economic Development Program, based upon a pro rata formula measured by each recipient's share of the funds as compared to the total funds disbursed to all recipients during the year. The share of costs for administrative services shall be paid in its total amount by the recipient port upon execution by the port and the Department of Transportation of a joint participation agreement for each Florida Seaport Transportation and Economic Development Program approved project. Such administrative payment is in addition to the matching funds required to be paid by the recipient port.~~

---

## **ARTICLE IX**

### **AMENDMENTS**

~~Any and all references to Statute or Administrative Code shall mean the specified Statute or Administrative Code, as amended or revised from time-to-time, or any successor thereto.~~

These By-Laws may be amended by a majority vote of the members in good standing present at any meeting provided a quorum of members is present and the proposed changes have been submitted to the membership in writing at least seven (7) days prior to the meeting. The By-Laws may also be amended on the approval of the majority of the members in good standing received in the course of a mail or email referendum.

*Effective: 08/27/00  
Amended: 12/03/00  
Amended: 10/02/13*

*Effective: 08/27/00*  
*Amended: 12/03/00*

Amended: 10/02/20



**TAB 8b**  
**FSTED Officer Elections**

# **Florida Seaport Transportation and Economic Development Council**

Canaveral Port Authority · Port Citrus · Port Everglades · Port of Fernandina · Port of Fort Pierce  
Jacksonville Port Authority · Port of Key West · Manatee County Port Authority · PortMiami · Port of Palm Beach  
Panama City Port Authority · Port of Pensacola · Port St. Joe Port Authority · Port St. Pete · Tampa Port Authority  
Florida Department of Economic Opportunity · Florida Department of Transportation

## **2020/2021 FSTED Officer Nominating Committee Meeting**

August 26, 2020 – 12:00 p.m.

1. **Call to Order**
2. **Roll Call**
3. **Discussion of Officer Nominations**  
Current Officers:  
*CHAIRMAN:* **Amy Miller, Port of Pensacola**  
*VICE CHAIRMAN:* **John Murray, Port Canaveral**  
*SECRETARY/ TREASURER:* **Eric Green, JAXPORT**
4. **Adjournment**



Florida Seaport Transportation and  
Economic Development Council

**Nominating Committee**

August 26, 2020-12:00 p.m.

A teleconference meeting of the Florida Seaport Transportation and Economic Development (FSTED) Council Nominating Committee was held on August 26, 2020 at 12:05 p.m. Members present were:

1. Wayne Stubbs, Port of Panama City-Chair
2. Doug Bradshaw, Port of Key West
3. Paul Anderson, Port Tampa Bay

Also, in attendance were Doug Wheeler and Casey Grigsby, staff to the Committee.

Wheeler began the meeting by summarizing requisites in the FSTED by-laws of the process for nominating and electing officers to the Council. The FSTED officers, Chair, Vice Chair, and Secretary/Treasurer are elected by the members of the FSTED Council on an annual basis. These positions are held for a one-year term that can be renewed for one consecutive term.

FSTED offices are currently held by Amy Miller (Pensacola), Chairwoman; John Murray (Canaveral), Vice Chair; and Secretary/Treasurer Eric Green (JAXPORT). Doug pointed out that John Murray has agreed to serve as FSTED Council Chair.

Doug Bradshaw made a motion to the following proposed slate, which was seconded by Anderson.

Chair: John Murray  
Vice Chair: Juan Kuryla  
Secretary/Treasurer: Jonathan Daniels

After further discussion, the motion was amended. The Committee discussed several candidates and voted unanimously to approve the following slate for recommendation to the FSTED Council at its next meeting:

Chair: John Murray  
Vice Chair: Paul Anderson  
Secretary/Treasurer: Juan Kuryla

Having no further business, the meeting was adjourned at 12:37 p.m.

# **Florida Seaport Transportation and Economic Development Council**

Canaveral Port Authority · Port Citrus · Port Everglades · Port of Fernandina · Port of Fort Pierce  
Jacksonville Port Authority · Port of Key West · Manatee County Port Authority · PortMiami · Port of Palm Beach  
Panama City Port Authority · Port of Pensacola · Port St. Joe Port Authority · Port St. Pete · Tampa Port Authority  
Florida Department of Economic Opportunity · Florida Department of Transportation

## **ELECTION OF OFFICERS**

### **FSTED Nominating Committee**

### **Recommended Slate of Officers 2020/2021**

#### **CURRENT OFFICERS**

##### **CHAIR:**

*Amy Miller*

##### **VICE CHAIRMAN:**

*John Murray*

##### **SECRETARY/ TREASURER:**

*Eric Green*

#### **2020/2021 NOMINEE**

*John Murray*

*Paul Anderson*

*Juan Kuryla*

**TAB 8c**  
**New Business**

**TAB 9**  
**Adjournment**